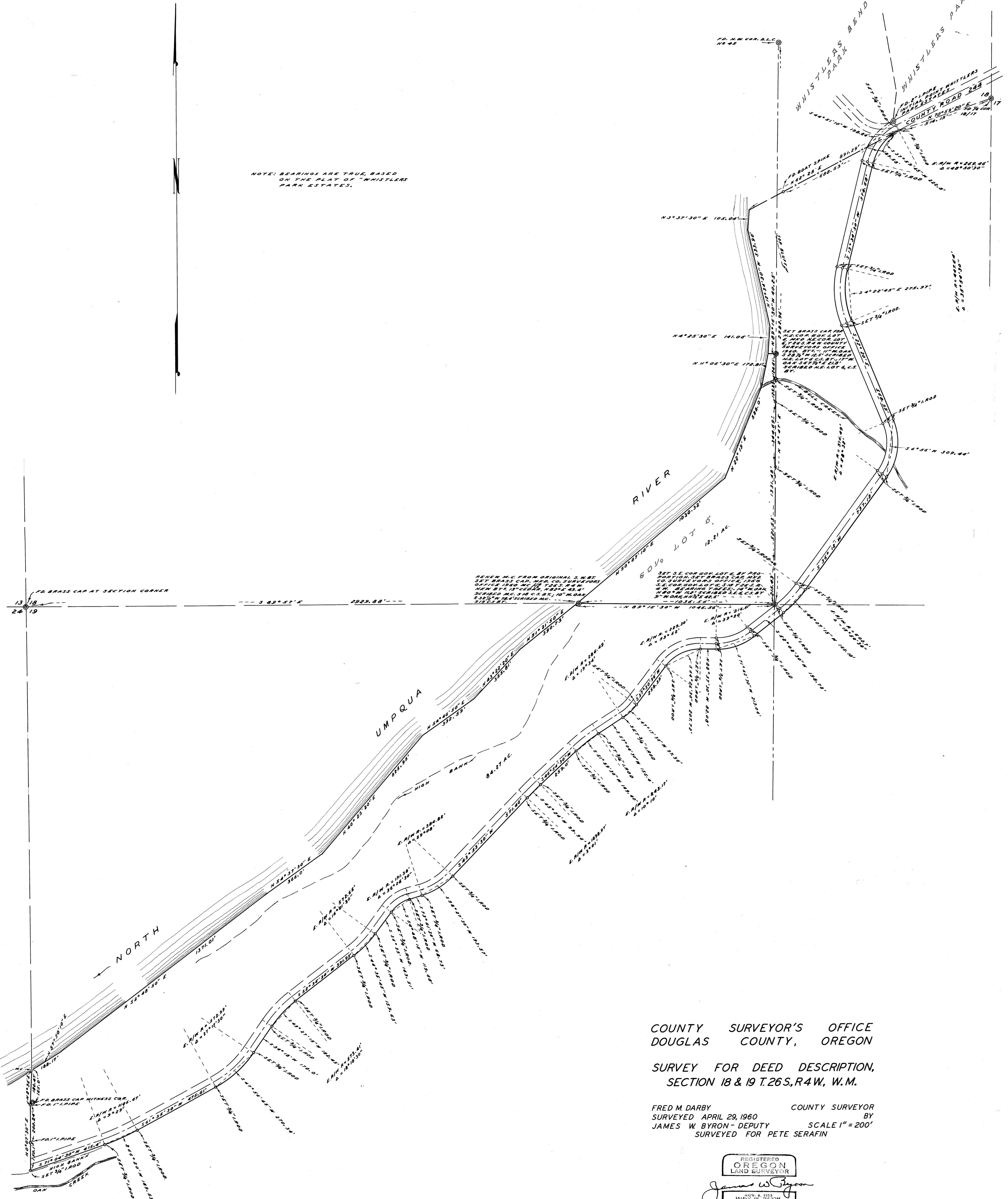


NOTE: BEARINGS ARE TRUE, BASED  
ON THE PLAT OF WHISTLERS  
PARK ESTATES.



COUNTY SURVEYOR'S OFFICE  
DOUGLAS COUNTY, OREGON

SURVEY FOR DEED DESCRIPTION,  
SECTION 18 & 19 T.26S, R.4W, W.M.

FRED M. DARBY COUNTY SURVEYOR  
SURVEYED APRIL 29, 1960 BY  
JAMES W. BYRON - DEPUTY SCALE 1" = 200'  
SURVEYED FOR PETE SERAFIN

REGISTERED  
OREGON  
LAND SURVEYOR  
*James W. Byron*  
JAMES W. BYRON  
303

COUNTY SURVEYORS FILE DATA  
DO NOT REMOVE FROM OFFICE