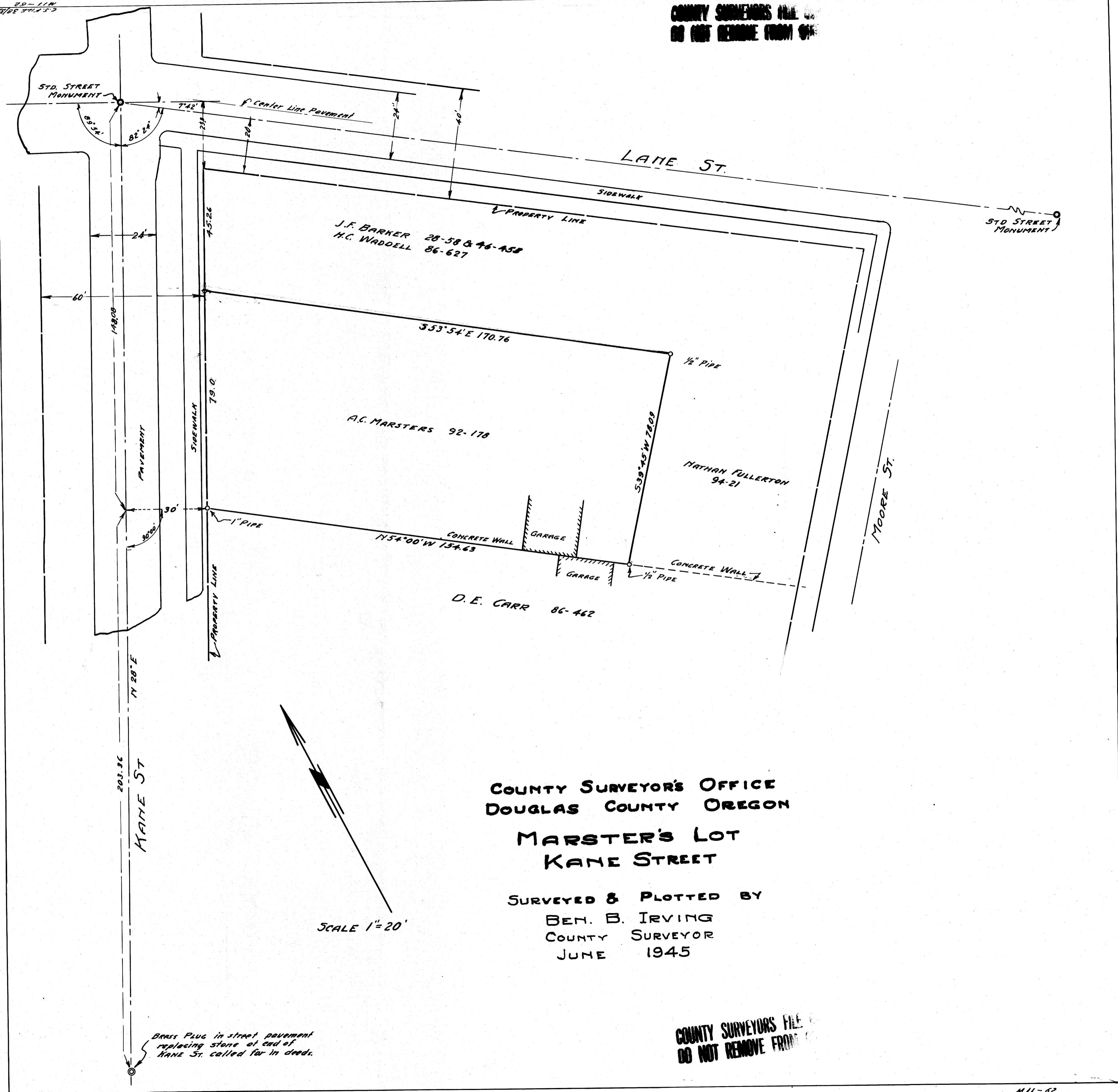


COUNTY SURVEYORS FILE
DO NOT REMOVE FROM OFFICE

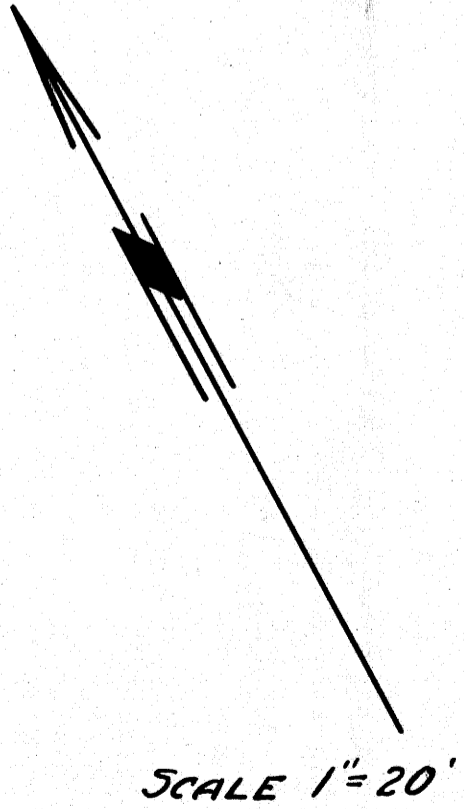


20-11W
C.S. FILE 38/38

COUNTY SURVEYOR'S OFFICE
DOUGLAS COUNTY OREGON

**MARSTER'S LOT
KANE STREET**

SURVEYED & PLOTTED BY
BEN. B. IRVING
COUNTY SURVEYOR
JUNE 1945



Brass Plug in street pavement
replacing stone at end of
KANE ST. called for in deeds.

COUNTY SURVEYORS FILE
DO NOT REMOVE FROM OFFICE