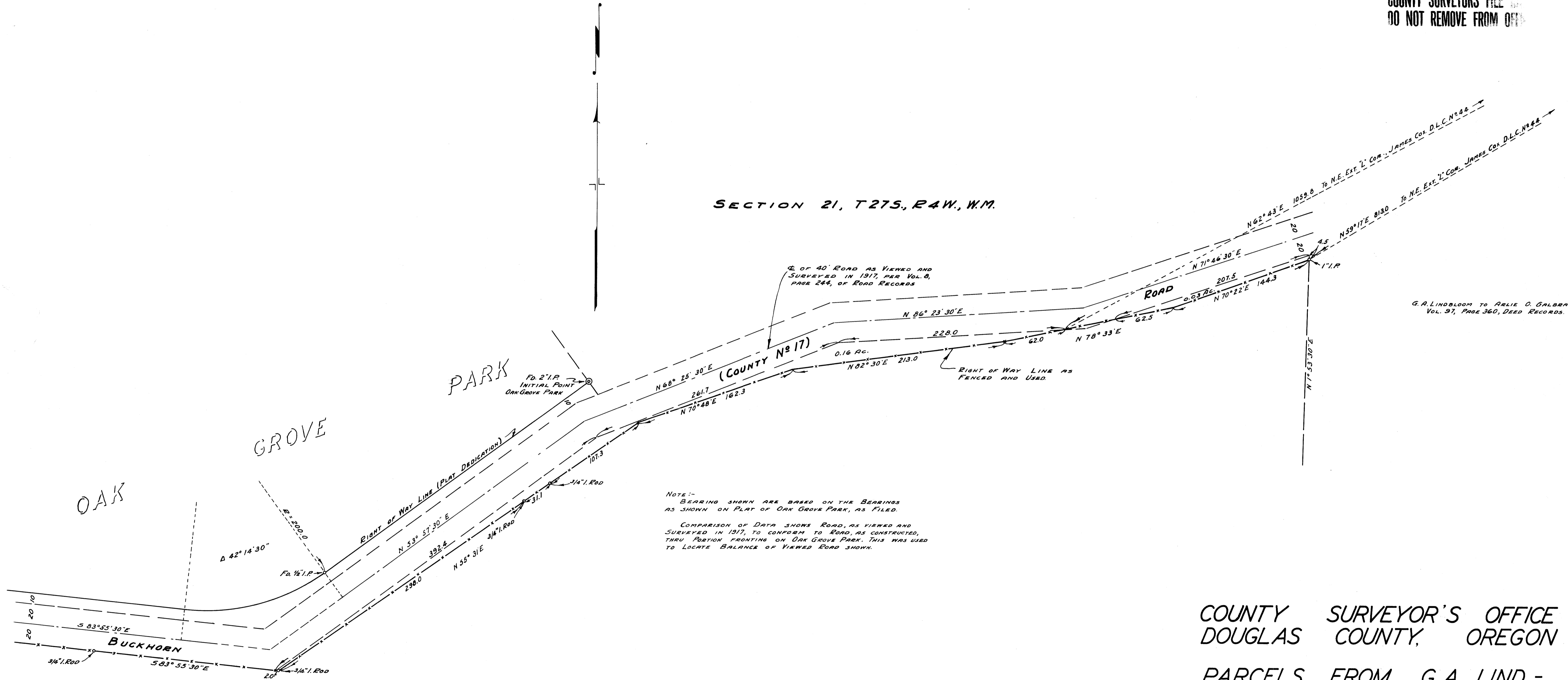


COUNTY SURVEYORS FILE  
DO NOT REMOVE FROM OFFICE

SECTION 21, T27S, R4W, W.M.



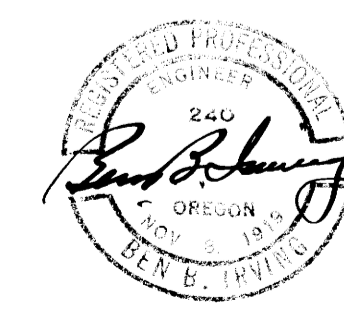
NOTE:-  
 BEARING SHOWN ARE BASED ON THE BEARINGS  
 AS SHOWN ON PLAT OF OAK GROVE PARK, AS FILED.  
 COMPARISON OF DATA SHOWS ROAD, AS VIEWED AND  
 SURVEYED IN 1917, TO CONFORM TO ROAD, AS CONSTRUCTED,  
 THRU PORTION FRONTING ON OAK GROVE PARK. THIS WAS USED  
 TO LOCATE BALANCE OF VIEWED ROAD SHOWN.

G.A. LINDBLOOM TO ARLIE O. GALBRAITH  
 VOL. 97, PAGE 360, DEED RECORDS.

COUNTY SURVEYOR'S OFFICE  
 DOUGLAS COUNTY, OREGON

PARCELS FROM G.A. LIND-  
 BLOOM TO DOUGLAS CO.,  
 FOR ROAD PURPOSES.

BEN. B. IRVING  
 FEB. 23, 1951  
 COUNTY SURVEYOR  
 SCALE 1" = 50'



COUNTY SURVEYORS FILE  
 DO NOT REMOVE FROM OFFICE