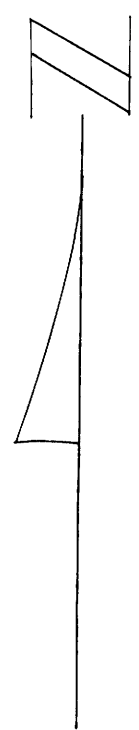


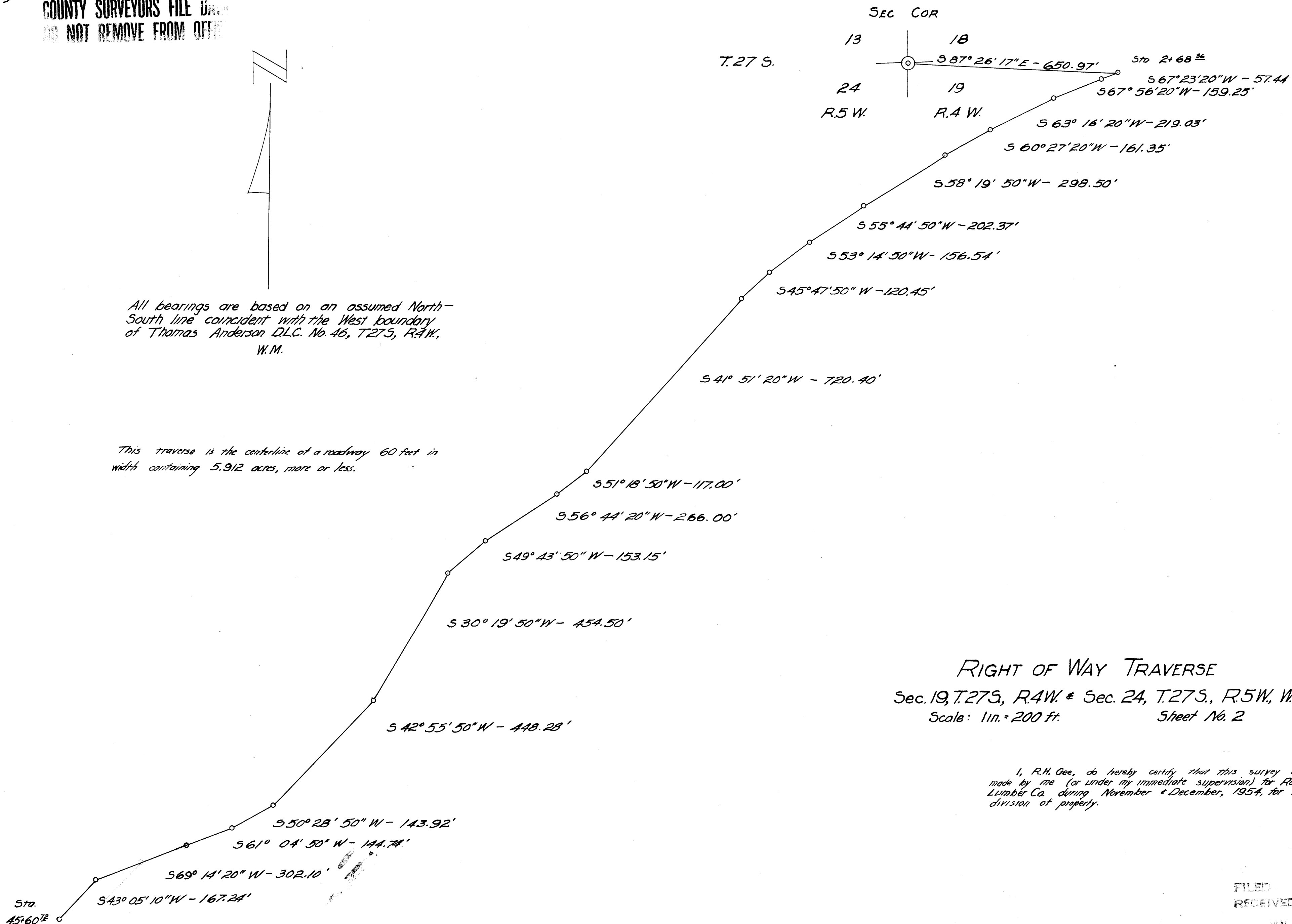
55/18 41/35

COUNTY SURVEYORS FILE
DO NOT REMOVE FROM OFFICE



All bearings are based on an assumed North-South line coincident with the West boundary of Thomas Anderson D.L.C. No. 46, T.27S, R.4W, W.M.

This traverse is the centerline of a roadway 60 feet in width containing 5.912 acres, more or less.



RIGHT OF WAY TRAVERSE
Sec. 19, T.27S, R.4W. & Sec. 24, T.27S, R.5W, W.M.
Scale: 1 in. = 200 ft. Sheet No. 2

I, R.H. Gee, do hereby certify that this survey was made by me (or under my immediate supervision) for Roseburg Lumber Co. during November & December, 1954, for subdivision of property.

Sta. 45+60.72 is on centerline of the Dixonville-Buckham County Road.

FILED
RECEIVED
JAN 20 1955
COUNTY SURVEYOR
DOUGLAS COUNTY, ORE.

R.H. Gee

COUNTY SURVEYORS FILE
DO NOT REMOVE FROM OFFICE

C. S. File No. 41/395
M11-54