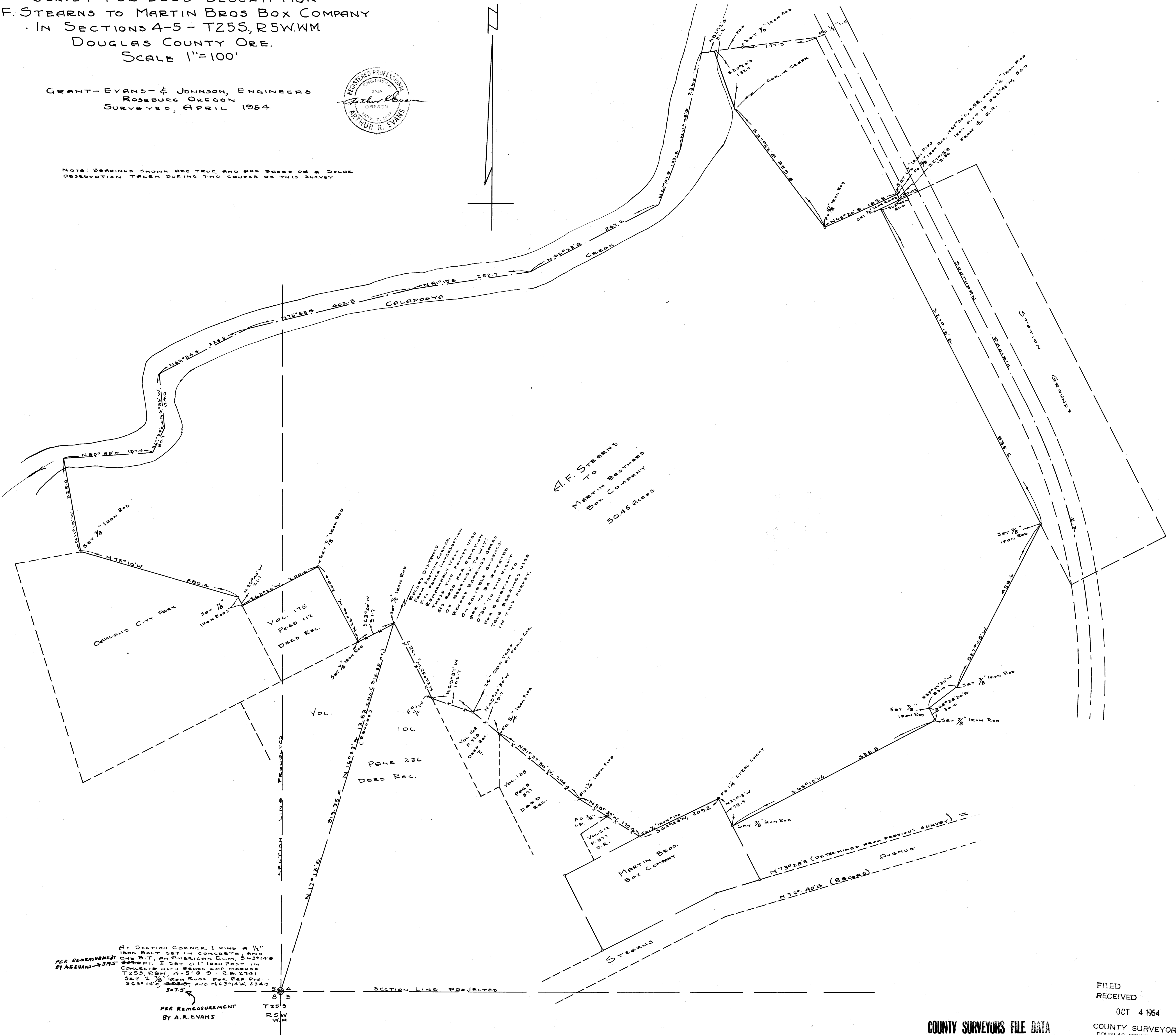
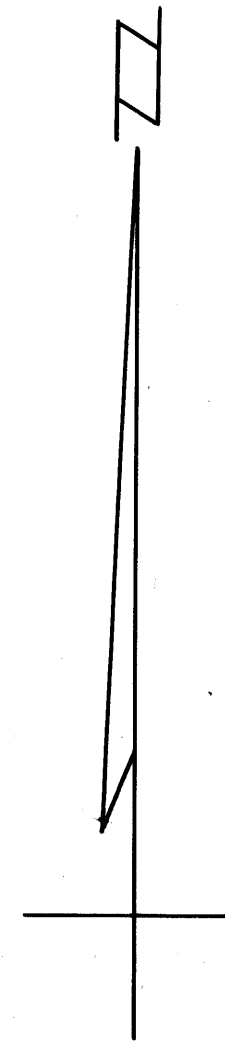


SURVEY FOR DEED DESCRIPTION  
A.F. STEARNS TO MARTIN BROS BOX COMPANY  
IN SECTIONS 4-5 - T25S, R5W.WM  
DOUGLAS COUNTY ORE.  
SCALE 1"=100'

GRANT-EVANS & JOHNSON, ENGINEERS  
ROSBURG OREGON  
SURVEYED, APRIL 1954



NOTE: BEARINGS SHOWN ARE TRUE AND ARE BASED ON A SOLAR OBSERVATION TAKEN DURING THE COURSE OF THIS SURVEY



AT SECTION CORNER I FIND A 1/2" IRON BOLT SET IN CONCRETE AND PER RE-MEASUREMENT BY A.R. EVANS 3/7/55

PER RE-MEASUREMENT BY A.R. EVANS

T25S  
R5W  
WM

FILED  
RECEIVED  
OCT 4 1954  
COUNTY SURVEYOR  
DOUGLAS COUNTY, ORE.

COUNTY SURVEYORS FILE DATA  
DO NOT REMOVE FROM OFFICE