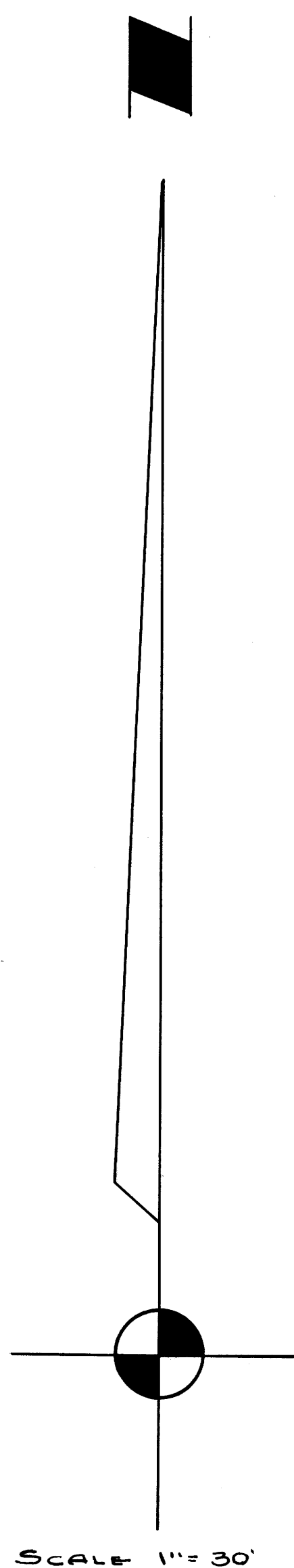


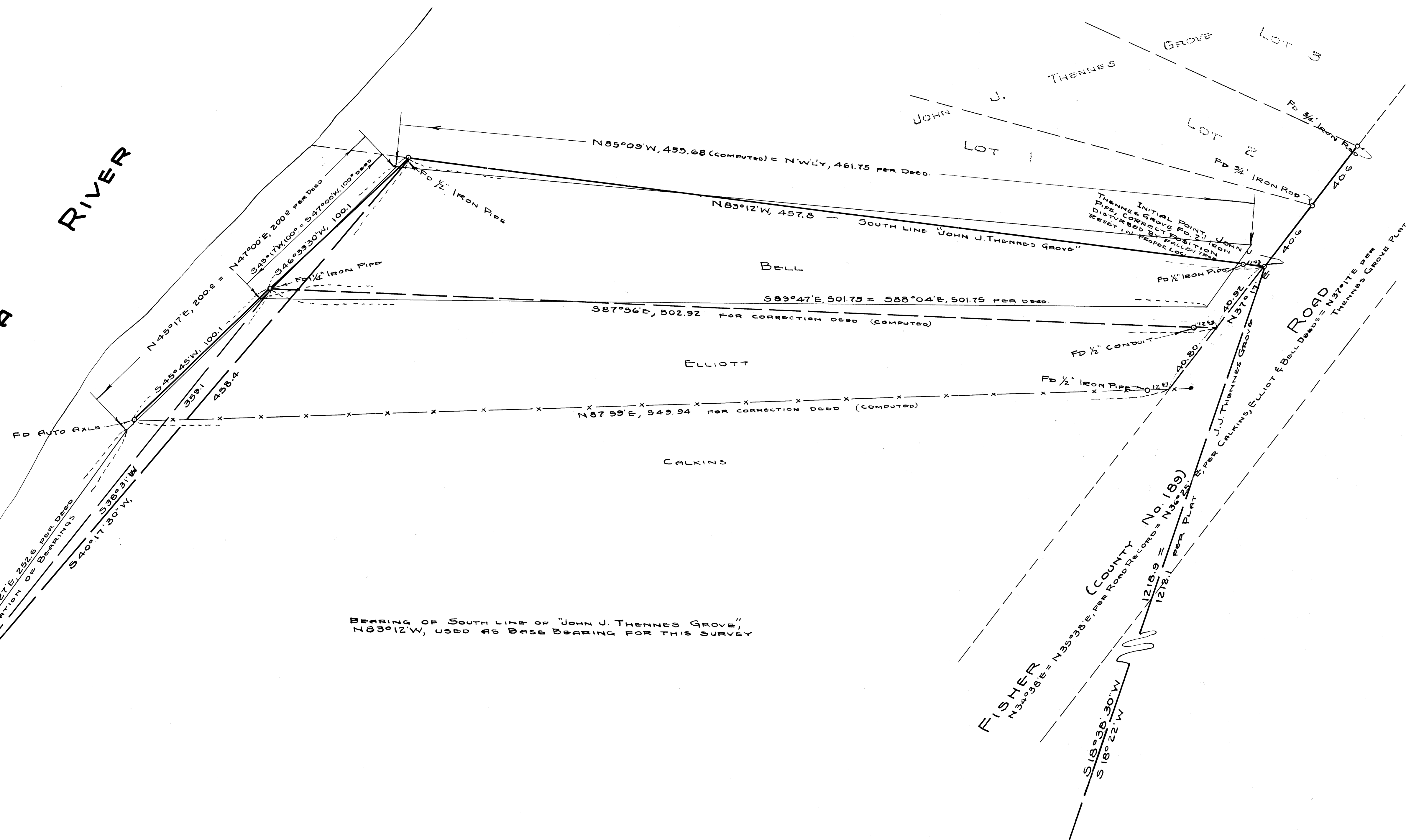
COUNTY SURVEYORS FILE
DO NOT REMOVE FROM OFFICE



NORTH

5 W. CORNER WM MCKINNEY
D.L.C. No. 47, PD 1" IRON BOLT
1 B.T., 8" IRON (NOW 14") N88 1/2° E
42.2 FT. BL. & 36" N. B.T.
14" DIA 5 77 3/4° E, 46.8 FT.

UMPQUA RIVER



BEARING OF SOUTH LINE OF "JOHN J. THENNES GROVE,"
N83°12'W, USED AS BASE BEARING FOR THIS SURVEY

COUNTY SURVEYOR'S OFFICE
DOUGLAS COUNTY OREGON
SURVEY TO CHECK DEED DESCRIPTION
IN WM MCKINNEY D.L.C. No. 47
T26 S., R6 W., WM.

BEN B. IRVING COUNTY SURVEYOR
SURVEYED & PLATTED DEC. 1950 BY
A.R. EVANS DEPUTY COUNTY SURVEYOR



1/2 CORNER, SECTIONS 27 & 34, T26 S., R6 W.
PD 3/4" IRON ROD, AND 3 B.T.'S
8" WHITE OAK, N7°36'W, 12.7 FT.
10" W. OAK, S41°41'W, 13.3 FT.
24" W. OAK, N33°E, 40.6 FT.

COUNTY SURVEYORS FILE
DO NOT REMOVE FROM OFFICE