

COUNTY SURVEYORS FILE
DO NOT REMOVE FROM FILE

SURVEY TO ESTABLISH PROPERTY LINES
 IN
 PART OF BLOCK 1, BLOCKS 2-3-4&5, AND SOUTH 531.54
 FEET OF BLOCKS 24&25 OF CLOVERDALE ADDITION
 TO ROSEBURG, LOCATED IN S.C. BRADEN D.L.C. No. 37
 T.27S., R.5W., W.M.; DOUGLAS COUNTY, OREGON
 For
 SCHOOL DISTRICT No. 4

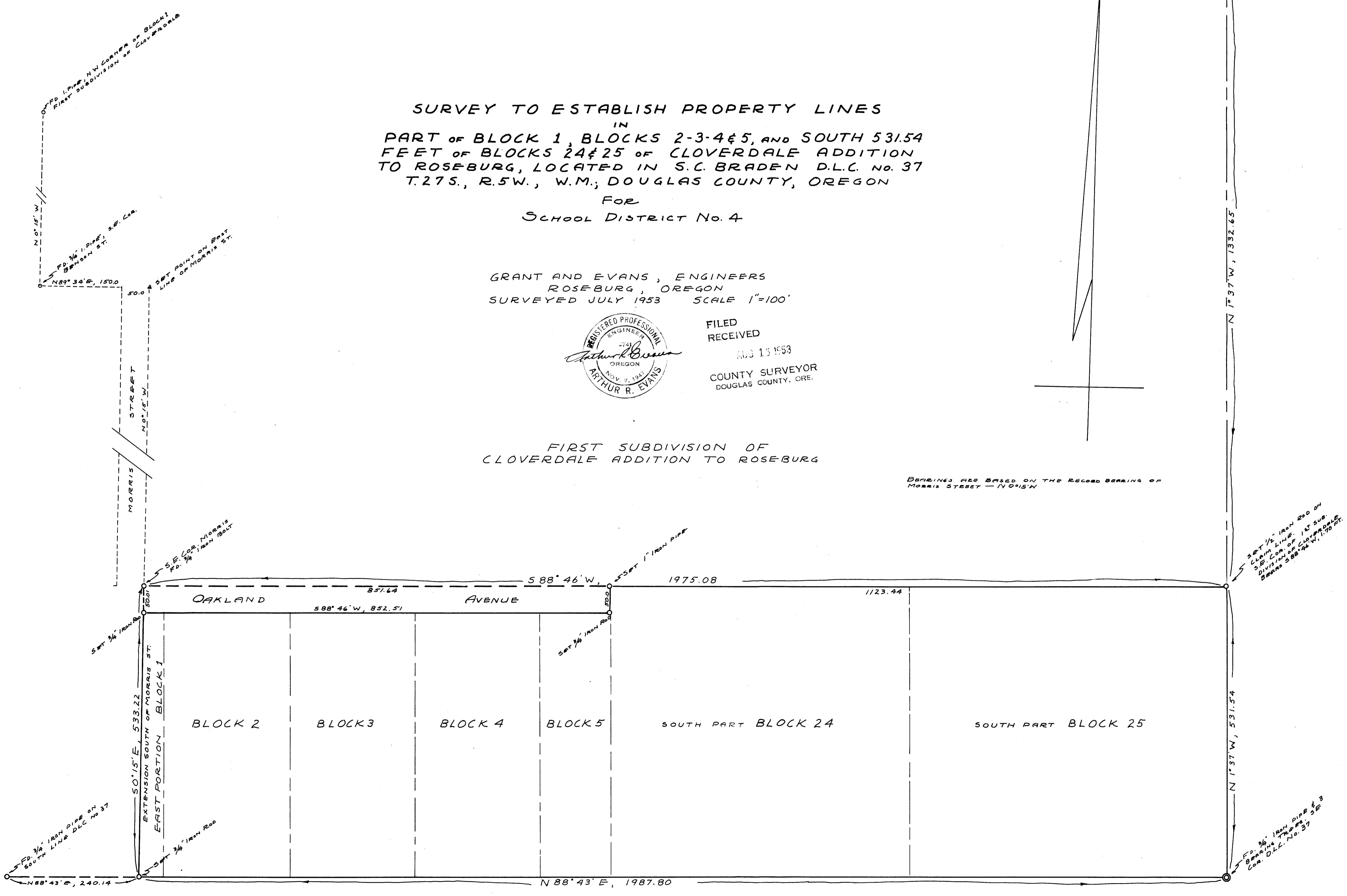
GRANT AND EVANS, ENGINEERS
 ROSEBURG, OREGON
 SURVEYED JULY 1953 SCALE 1"=100'



FILED
 RECEIVED
 AUG 15 1953
 COUNTY SURVEYOR
 DOUGLAS COUNTY, ORE.

FIRST SUBDIVISION OF
 CLOVERDALE ADDITION TO ROSEBURG

BEARINGS ARE BASED ON THE RECORD BEARING OF
 MORRIS STREET - N 0° 15' W



COUNTY SURVEYORS FILE
 DO NOT REMOVE FROM