

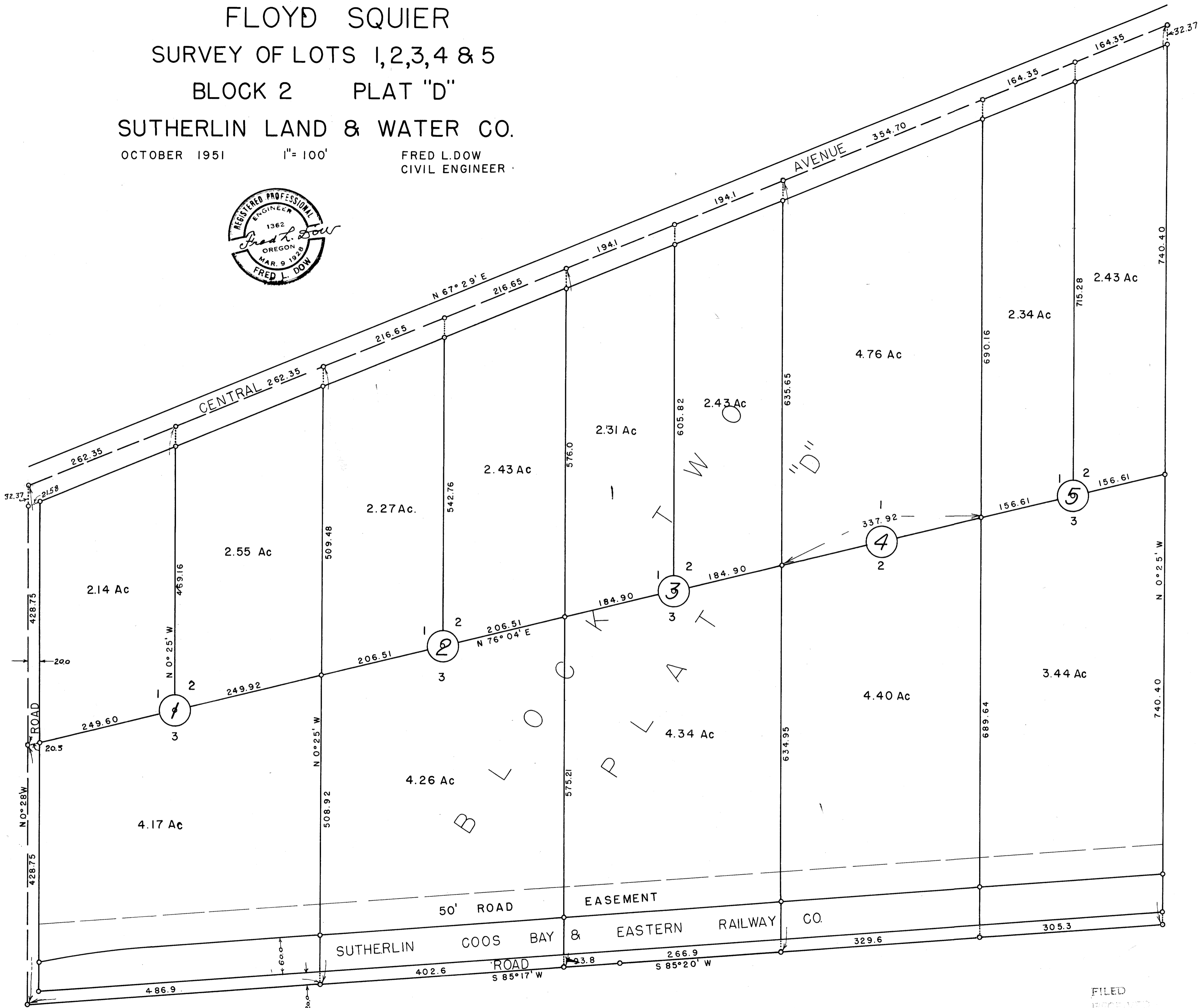
COUNTY SURVEYORS FILE
DO NOT REMOVE FROM OFFICE

FLOYD SQUIER
SURVEY OF LOTS 1, 2, 3, 4 & 5
BLOCK 2 PLAT "D"
SUTHERLIN LAND & WATER CO.

OCTOBER 1951

1" = 100'

FRED L. DOW
CIVIL ENGINEER



FILED
RECEIVED
MAY 27 1952
COUNTY SURVEYOR
DOUGLAS COUNTY, ORE.

COUNTY SURVEYORS FILE
DO NOT REMOVE FROM OFFICE

41-46
M. 11-46