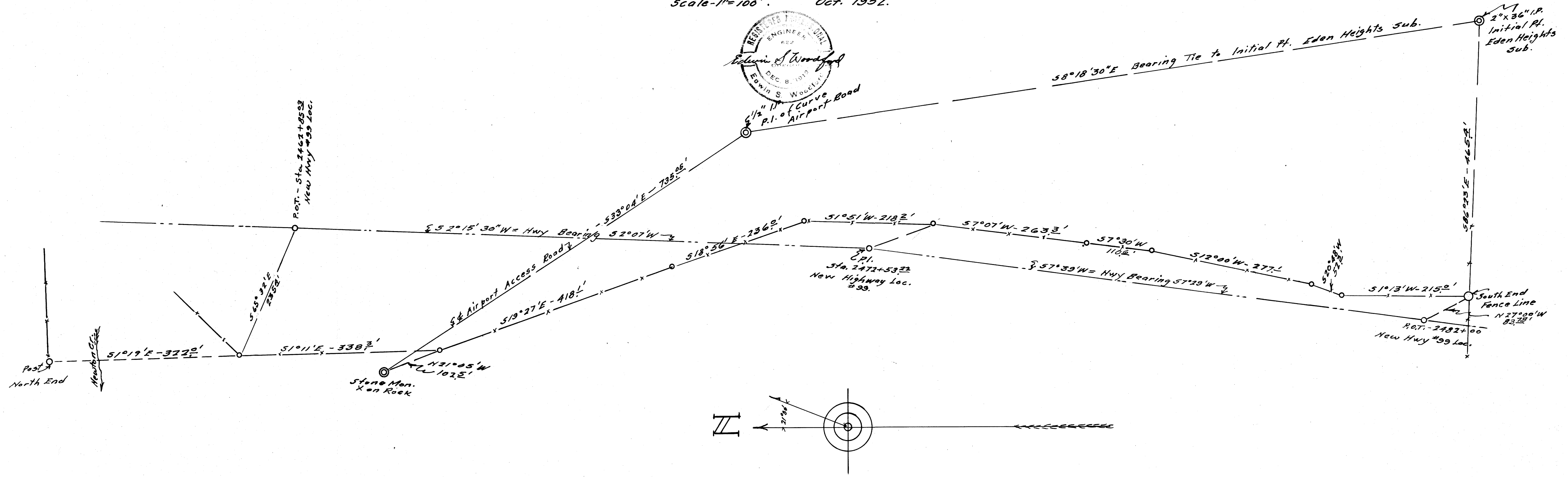
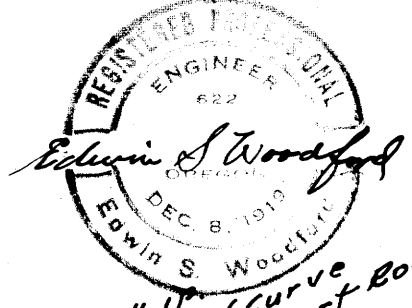


COUNTY SURVEYORS FILE
DO NOT REMOVE FROM FILE

MAP
SHOWING FENCE LINE
West side of Airport
Sec. 12 Tp. 27 S - Rg. 6 W W.M.
Scale - 1" = 100' Oct. 1952.



FILED
RECEIVED
JAN 30 1956
COUNTY SURVEYOR
DOUGLAS COUNTY, ORE.

COUNTY SURVEYORS FILE
DO NOT REMOVE FROM