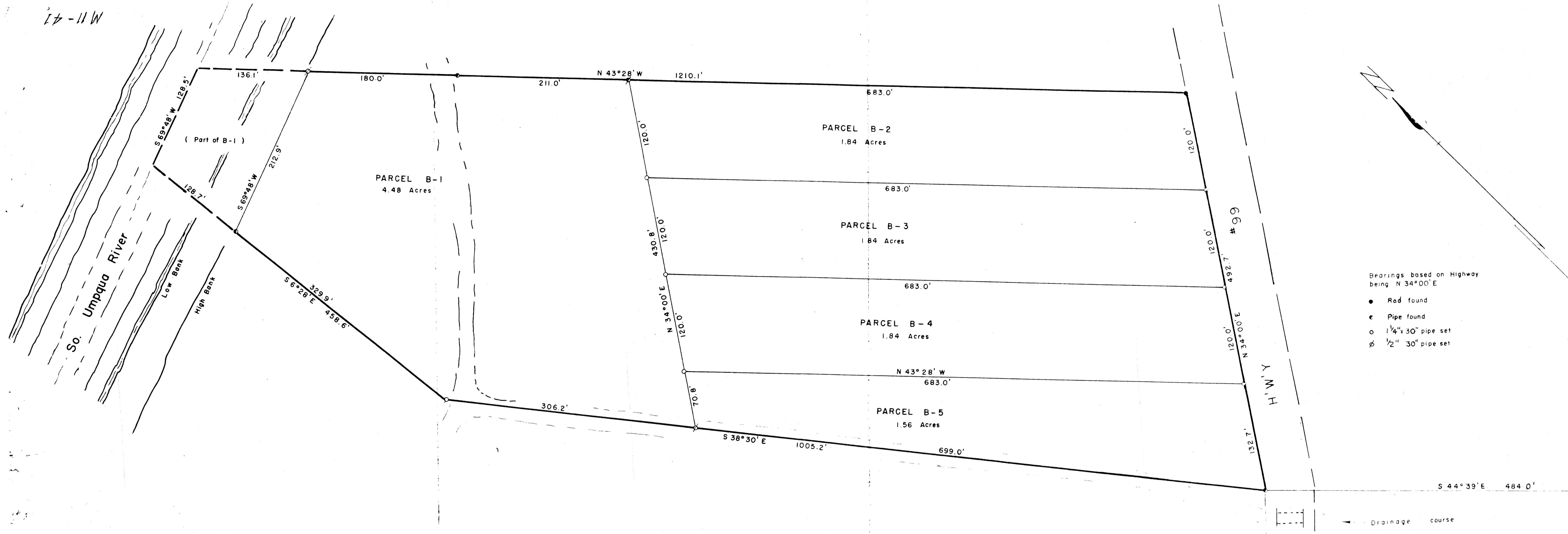


M 11-41



PLAT OF  
**FRED C. WEAVER Property**

IN Wm. WEAVER D.L.C. 39-T30S-R5W W.M.  
 Douglas Co., Oregon  
 July 1954 Scale 1" = 60'

*Fred C. Weaver*

FILED  
 RECEIVED  
 DEC 30 1955

COUNTY SURVEYOR  
 DOUGLAS COUNTY, ORE.

THIS COPY MADE FROM  
 A XEROX 2510  
 DATE 3-17-89