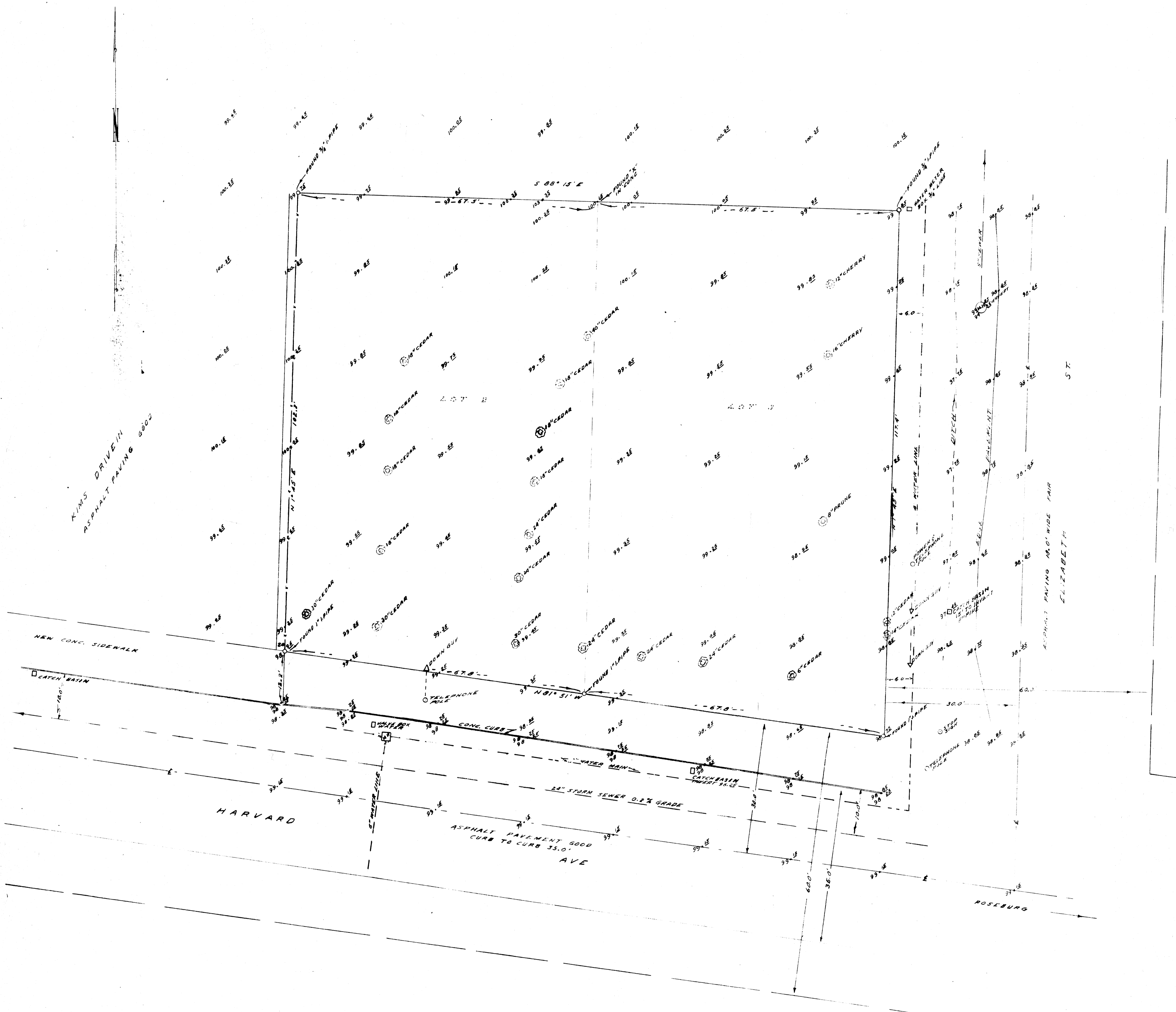
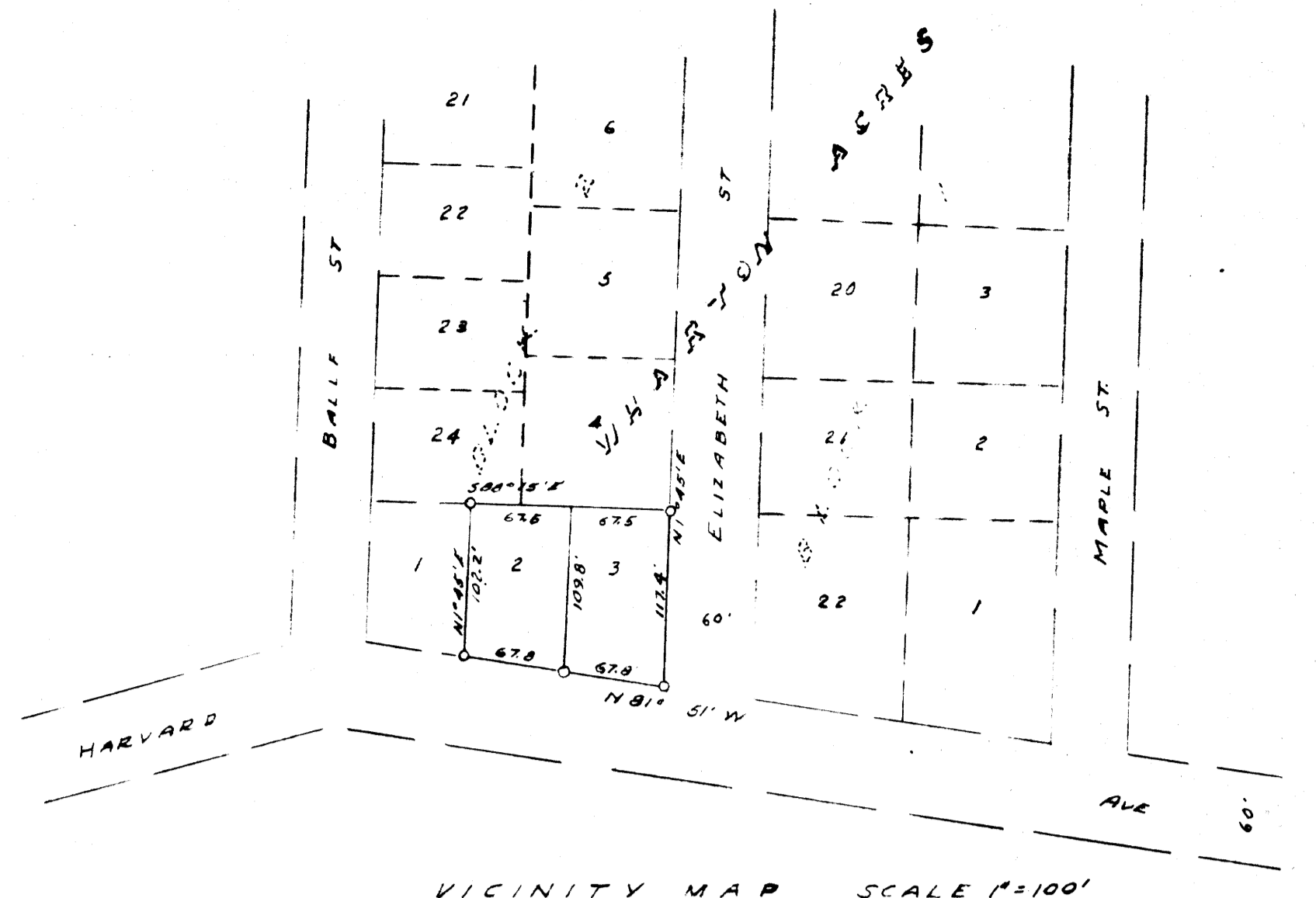


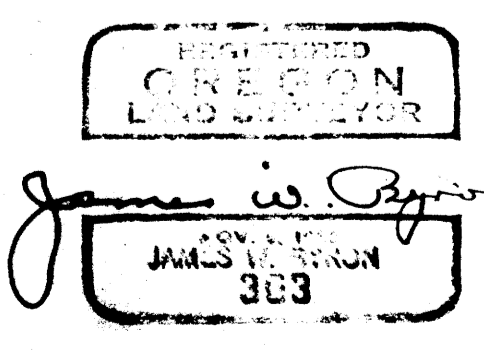
NOTE: BEARINGS BASED ON PLAT
OF WHARTON ACRES
ASSUMED ELEVATION 188.0'
TOP OF SITE AT N.E. COR. OF
PROPERTY



COUNTY SURVEYOR'S OFFICE
DOUGLAS COUNTY, OREGON

TOPOGRAPHY SURVEY IN LOTS 2 & 3
BLOCK 2 WHARTON ACRES

FRED M. DAHEY COUNTY SURVEYOR
SURVEYED SEPT 3, 1959 BY
JAMES W. BYRON - DEPUTY SCALE 1" = 10'
SURVEYED FOR THE TEXAS CO.



CS FILE FOLDER

CONTAINS

MORE

INFORMATION