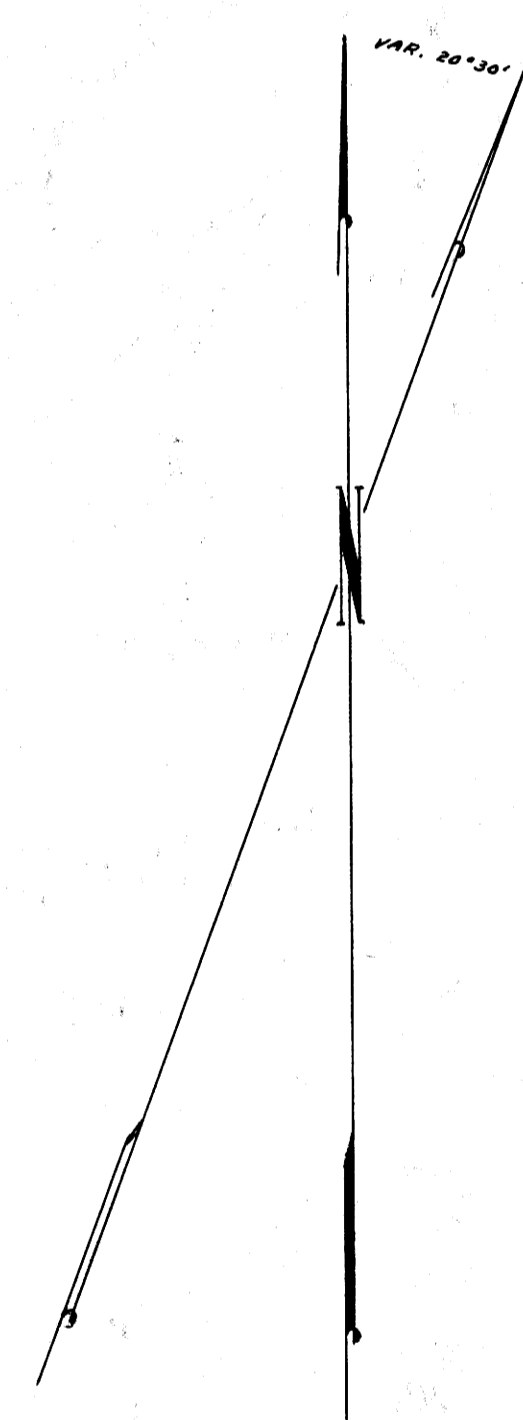
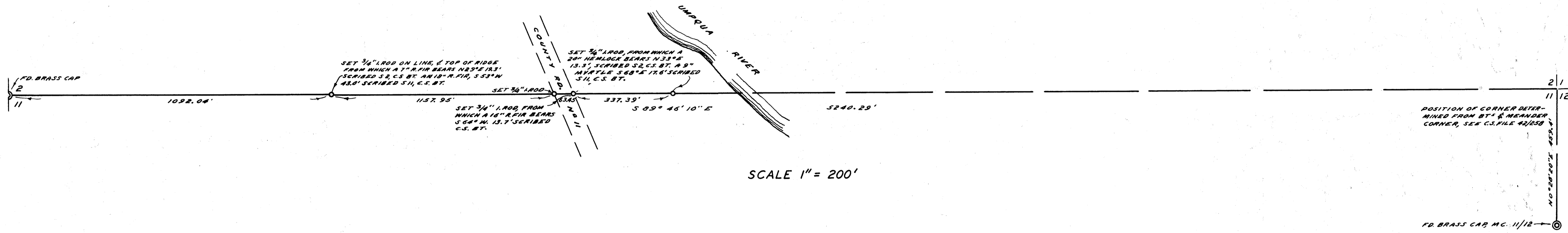


COUNTY SURVEYORS FILE 06  
DO NOT REMOVE FROM OFFICE



COUNTY SURVEYOR'S OFFICE  
DOUGLAS COUNTY, OREGON

TOPOGRAPHY & SECTION LINE SURVEY  
SECTION 2&11 T.23S., R 8 W., W.M.

FRED M. DARBY COUNTY SURVEYOR  
SURVEYED JULY 14, 1959  
BY JAMES W. BYRON - DEPUTY SCALE AS SHOWN  
SURVEYED FOR CO. PARK DEPT.

REGISTERED  
OREGON  
LAND SURVEYOR

James W. Byron

COV. & 1955  
JAMES W. BYRON  
303

COUNTY SURVEYORS FILE 06  
DO NOT REMOVE FROM OFFICE

**CS FILE FOLDER**

**CONTAINS**

**MORE**

**INFORMATION**