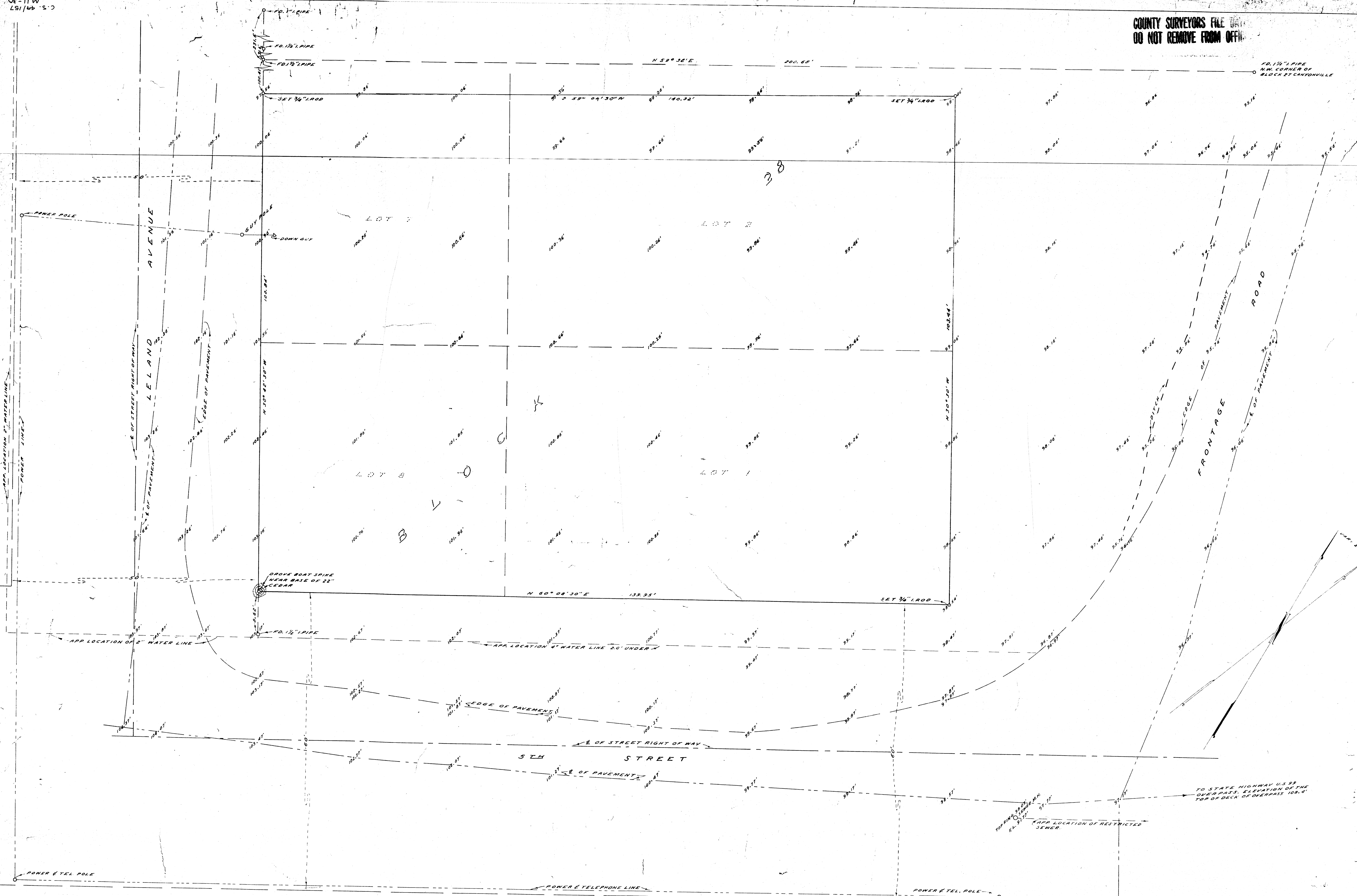


COUNTY SURVEYORS FILE
DO NOT REMOVE FROM OFFICE

C.S. 441/51
0E-11 W
C.C. 441/51



COUNTY SURVEYOR'S OFFICE
DOUGLAS COUNTY, OREGON

TOPOGRAPHY & PROPERTY LINE SURVEY
BLOCK 28, CANYONVILLE OREGON

FRED M. DARBY COUNTY SURVEYOR
SURVEYED JUNE 11, 12, 1959
JAMES W. BYRON - DEPUTY SCALE 1" = 8'
SURVEYED FOR TIDEWATER OIL CO.

THIS COPY MADE FROM
A XEROX 2510
DATE 3-20-89

COUNTY SURVEYORS FILE
DO NOT REMOVE FROM OFFICE

NOTE: BEARINGS ARE BASED ON N 30° 30' W
PARALLEL TO THE WEST LINE OF
BLOCK 27 AS SHOWN AS DATE FOR
ANDERSON'S 222 ADDITION.
NOTE: B.M. TOP RING OF SENNER M. H.
ASSUMED ELEVATION OF 98.01'

TO STATE HIGHWAY US 99
OVERPASS. ELEVATION OF THE
TOP OF DECK OF OVERPASS 108.4'

James W. Byron

C.S. 441/51
M 11-20