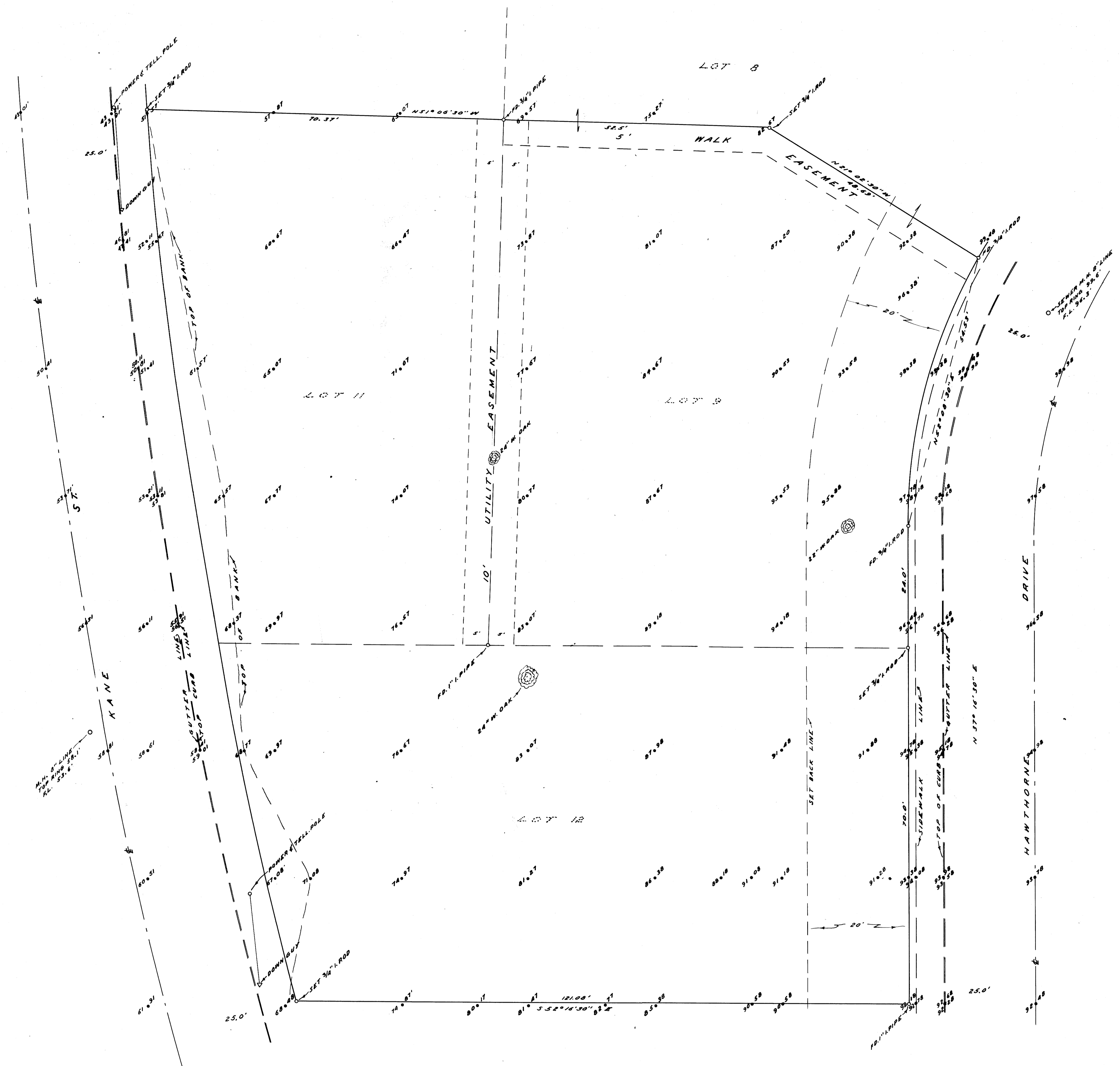


COUNTY SURVEYORS FILE #
DO NOT REMOVE FROM OFFICE



NOTE: BEARINGS BASED ON
N37°16'30" E ALONG HAWTHORNE
DRIVE AS PER REC. PLAT.

COUNTY SURVEYOR'S OFFICE
DOUGLAS COUNTY, OREGON

TOPOGRAPHY SURVEY OF
LOTS 9, 11 & 12, BLOCK A
HAWTHORNE TERRACE
FRED M. DARBY COUNTY SURVEYOR
SURVEYED JUNE 5, 1959 BY
JAMES W. BYRON-DEPUTY SCALE 1" = 10'
SURVEYED FOR KEN BAILEY

REGISTERED
OREGON
LAND SURVEYOR

James W. Byron

NOV. 4, 1952
JAMES W. BYRON
303

COUNTY SURVEYORS FILE DATA
DO NOT REMOVE FROM OFFICE

CS FILE FOLDER

CONTAINS

MORE

INFORMATION