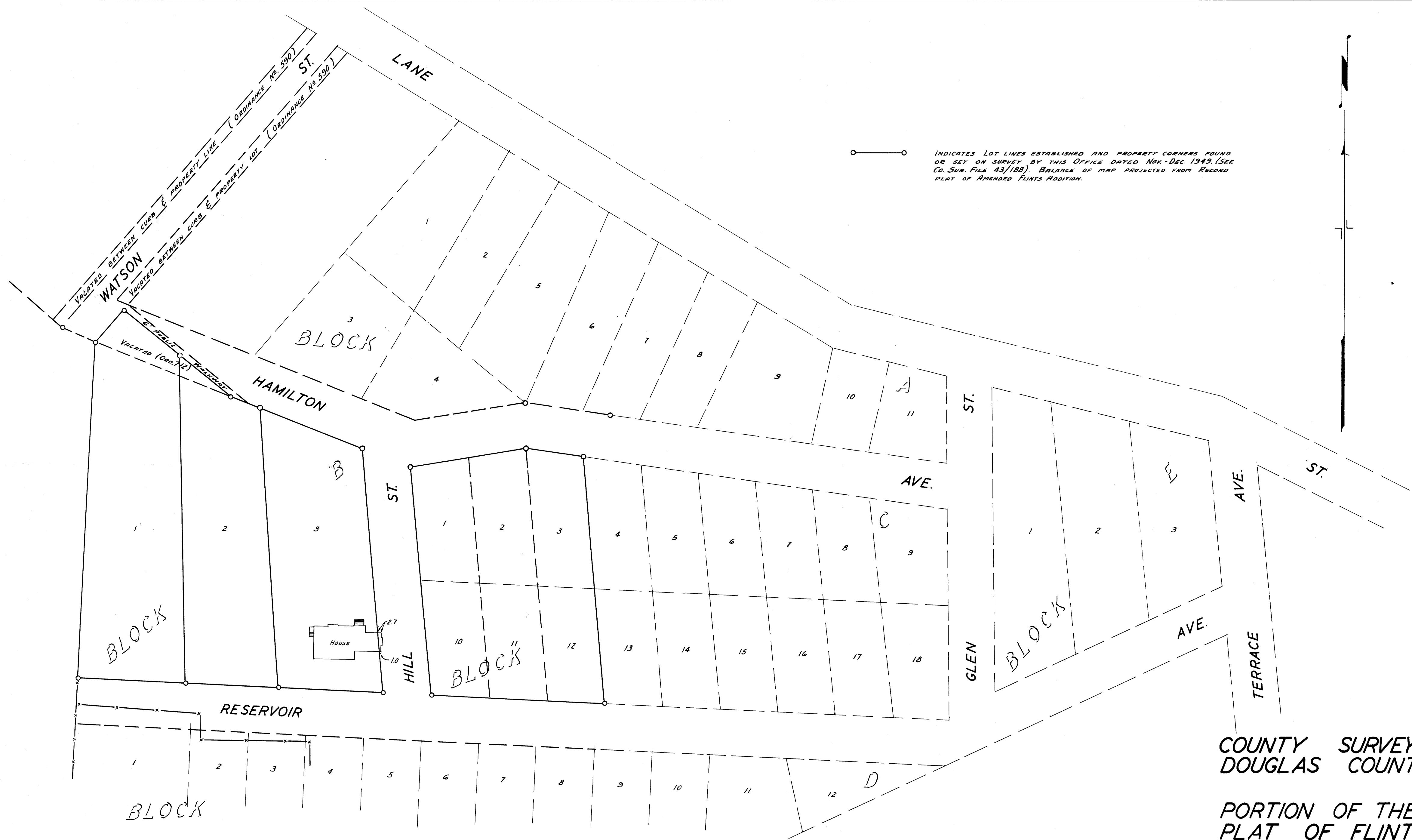
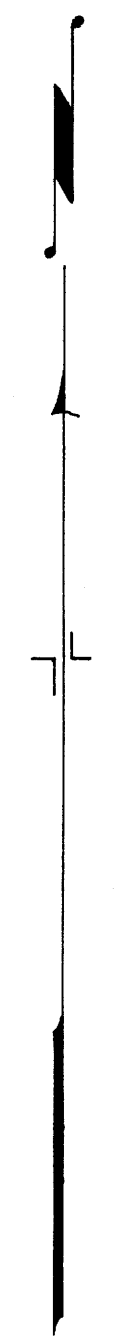


COUNTY SURVEYORS FILE DATA  
DO NOT REMOVE FROM OFFICE

—○— INDICATES LOT LINES ESTABLISHED AND PROPERTY CORNERS FOUND OR SET ON SURVEY BY THIS OFFICE DATED NOV.-DEC. 1943. (SEE CO. SUR. FILE 43/188). BALANCE OF MAP PROJECTED FROM RECORD PLAT OF AMENDED FLINTS ADDITION.



COUNTY SURVEYORS OFFICE  
DOUGLAS COUNTY OREGON

PORTION OF THE AMENDED  
PLAT OF FLINTS ADDITION  
TO ROSEBURG.

BEN B. IRVING COUNTY SURVEYOR  
DRAWN JAN. 13 1953 SCALE 1"=50'

COUNTY SURVEYORS FILE DATA  
DO NOT REMOVE FROM OFFICE