

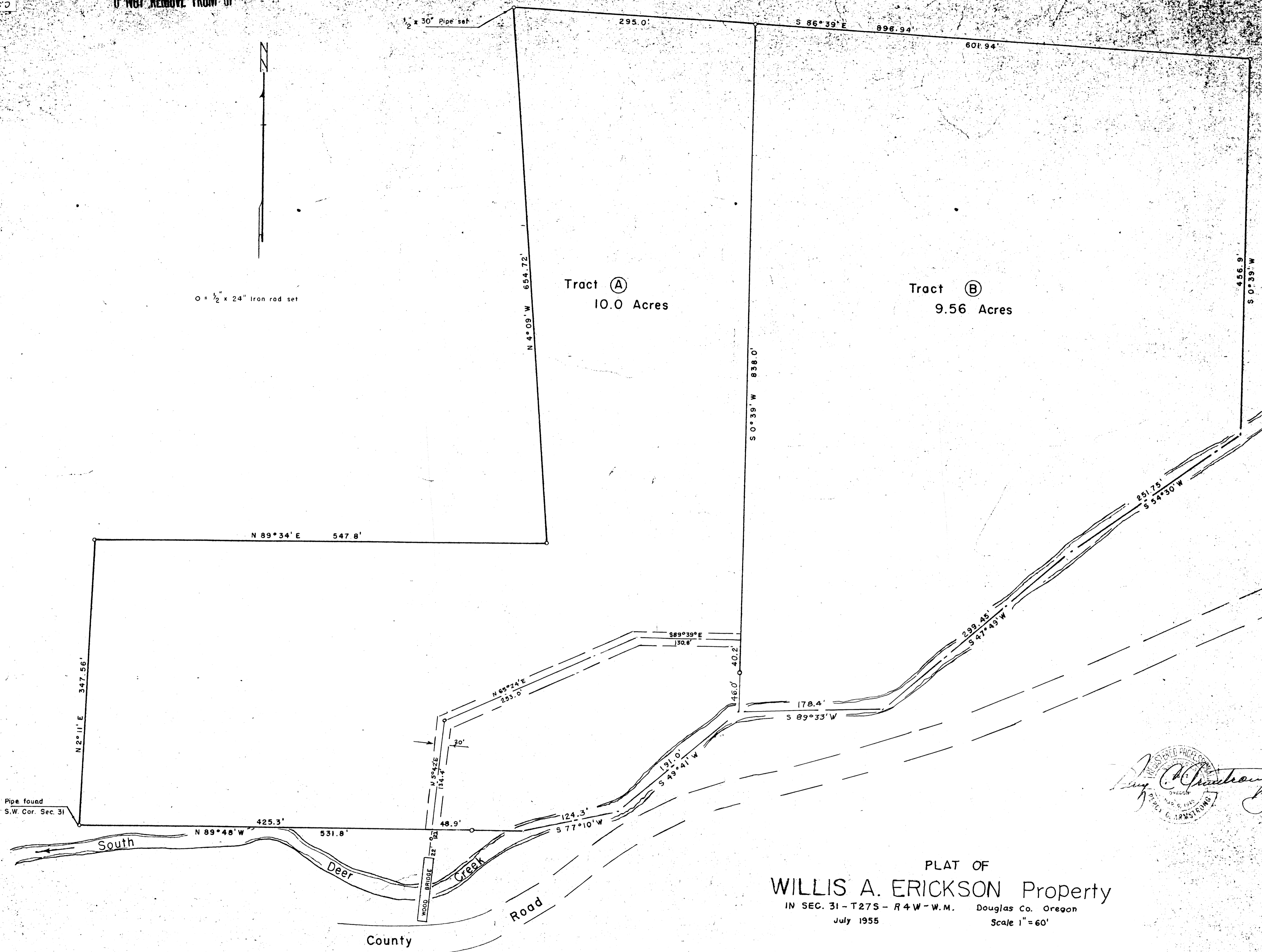
COUNTY SURVEYORS FILE DATA  
DO NOT REMOVE FROM OFFICE

1/2 x 30" Pipe set

0 = 1/2 x 24" Iron rod set

Tract (A)  
10.0 Acres

Tract (B)  
9.56 Acres



Douglas County, Oregon

PLAT OF  
**WILLIS A. ERICKSON** Property  
 IN SEC. 31-T27S-R4W-W.M. Douglas Co. Oregon  
 July 1955 Scale 1"=60'

FILED  
 RECEIVED  
 NOV 20 1958  
 COUNTY SURVEYOR  
 DOUGLAS COUNTY, ORE.

COUNTY SURVEYORS FILE DATA  
 DO NOT REMOVE FROM OFFICE

THIS COPY MADE FROM  
 A XEROX 2510  
 DATE 3-20-89  
 C.S. 42/402  
 M11-16