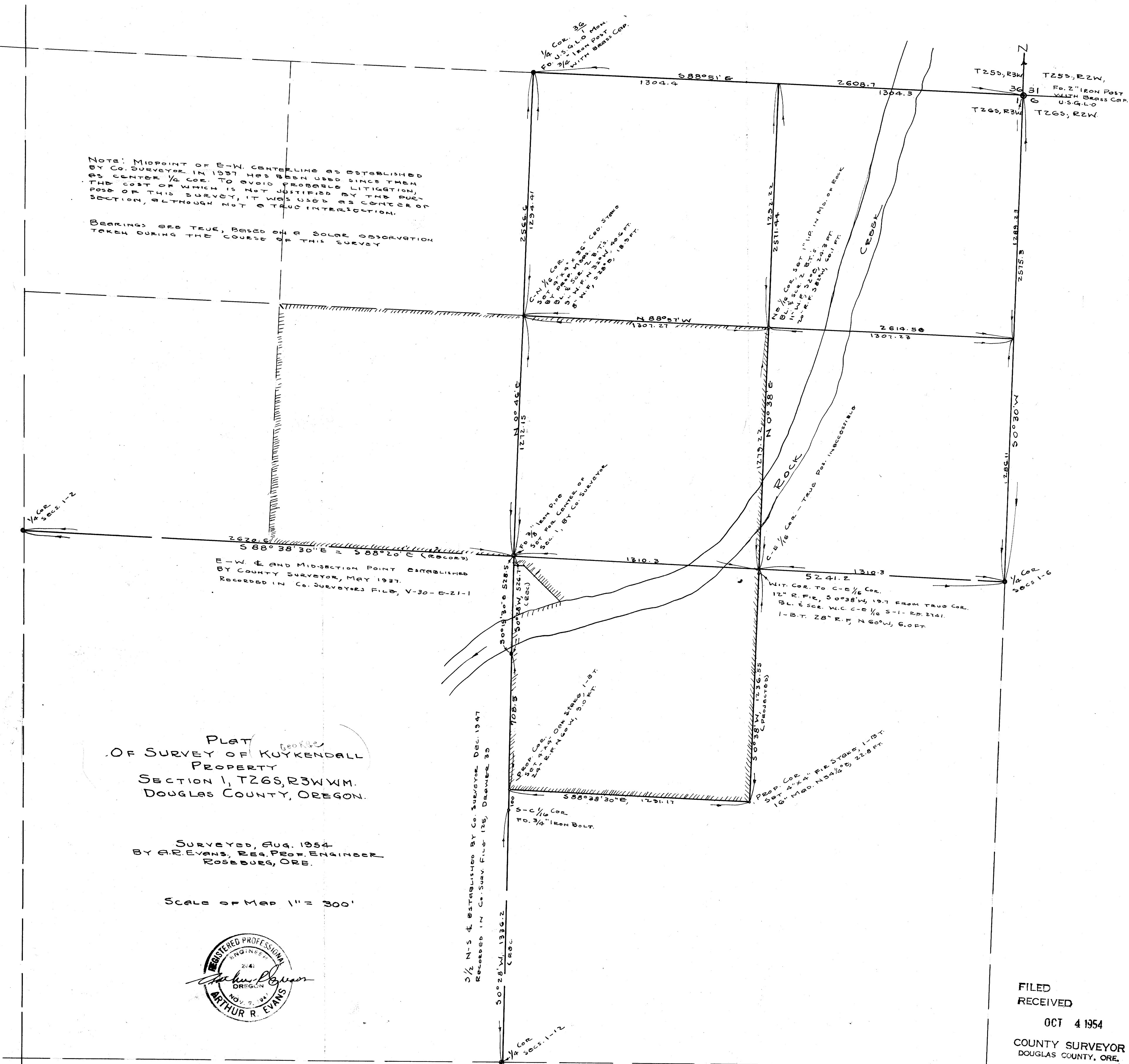


COUNTY SURVEYORS FILE DATA
DO NOT REMOVE FROM OFFICE

C.S. FILE 41/298
11/1/54

NOTES: MIDPOINT OF E-W CENTERLINE AS ESTABLISHED BY CO. SURVEYOR IN 1937 HAS BEEN USED AS CENTER OF 1/4 COR. 36 SINCE THEN THE COST OF WHICH IS 90.00 BY LITIGATION, AND OF WHICH IS 20.00 BY LITIGATION, SECTION, ALTHOUGH NOT A JUSTIFIED PURSUITION, ALTHOUGH NOT A JUSTIFIED PURSUITION.

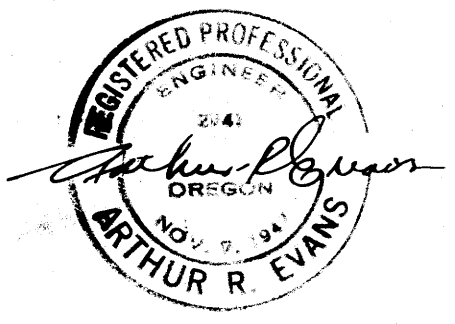
BEARINGS ARE TRUE, BASED ON A SOLAR OBSERVATION TAKEN DURING THE COURSE OF THIS SURVEY



PLAT
OF SURVEY OF KUYKENDALL
PROPERTY
SECTION 1, T26S, R3W, W.M.
DOUGLAS COUNTY, OREGON.

SURVEYED, AUG. 1954
BY A.R. EVANS, REG. PROF. ENGINEER
ROSEBURG, ORE.

SCALE OF MAP 1" = 300'



1/2 M-S ESTABLISHED BY CO. SURVEYOR DEC. 1947
RECORDED IN Co. Surv. File 135, DRAWER 35

50° 28' W. 1326.2
COR.

FILED
RECEIVED
OCT 4 1954
COUNTY SURVEYOR
DOUGLAS COUNTY, ORE.

COUNTY SURVEYORS FILE DATA
DO NOT REMOVE FROM OFFICE

C.S. FILE 41/298