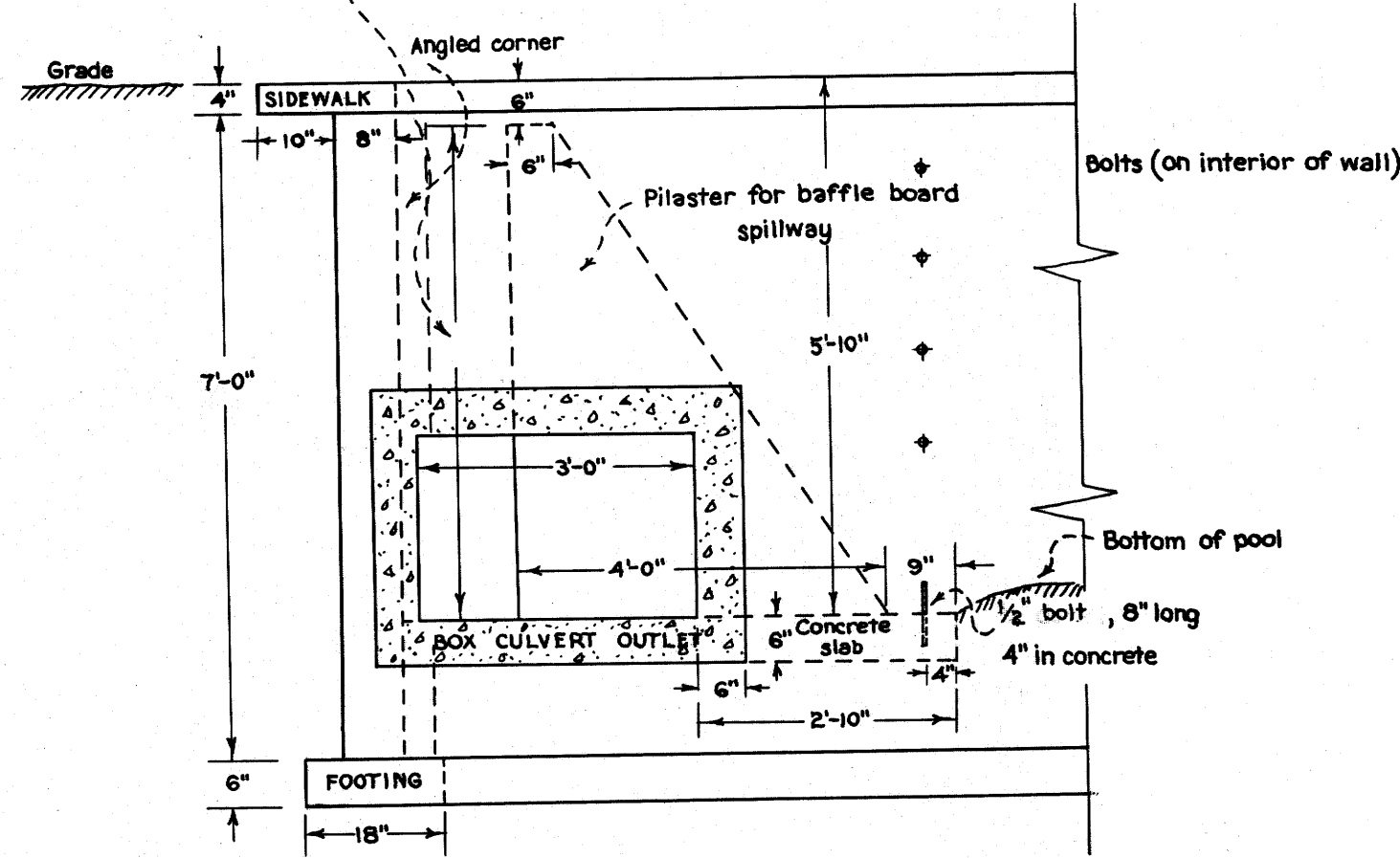
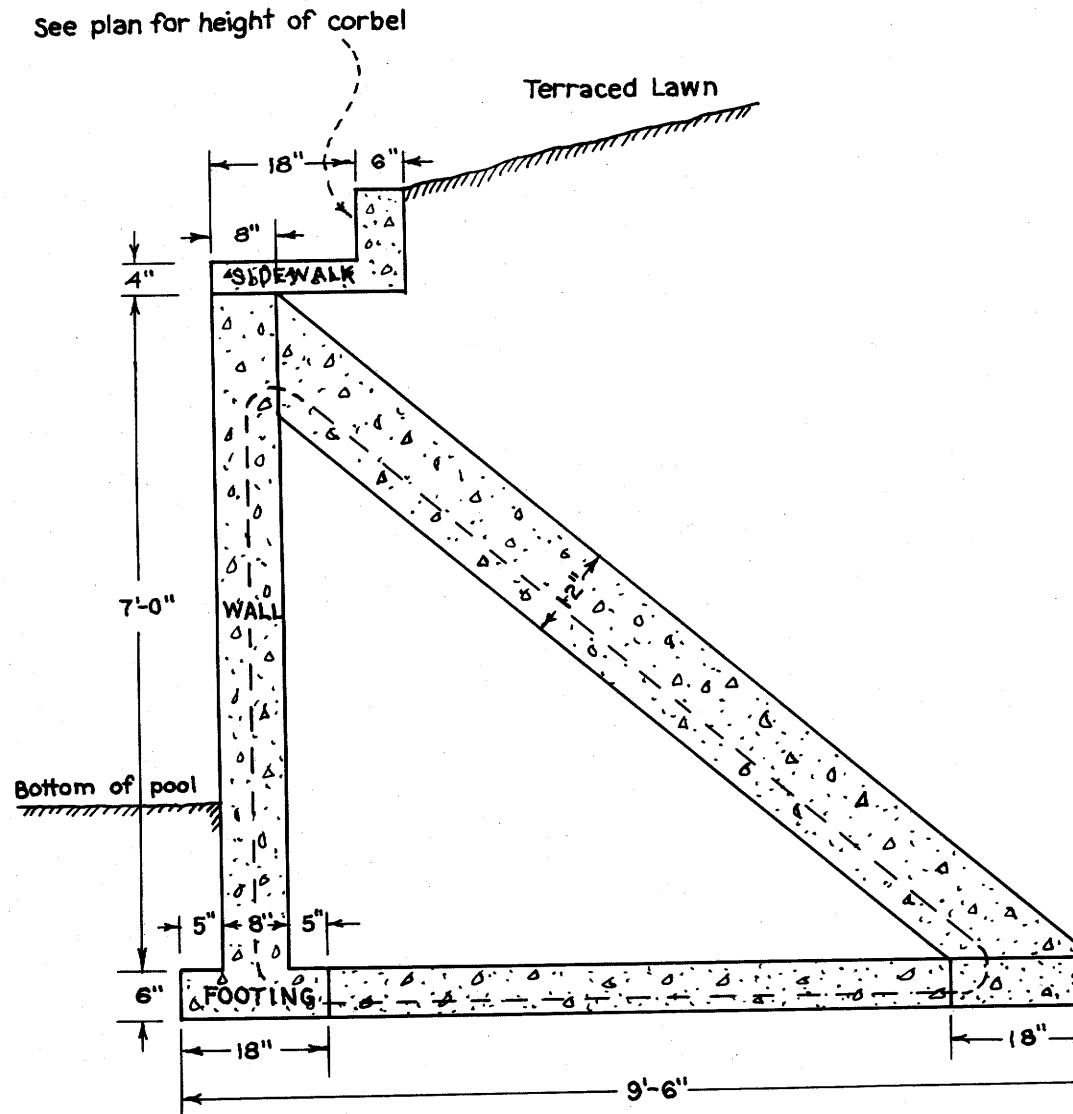


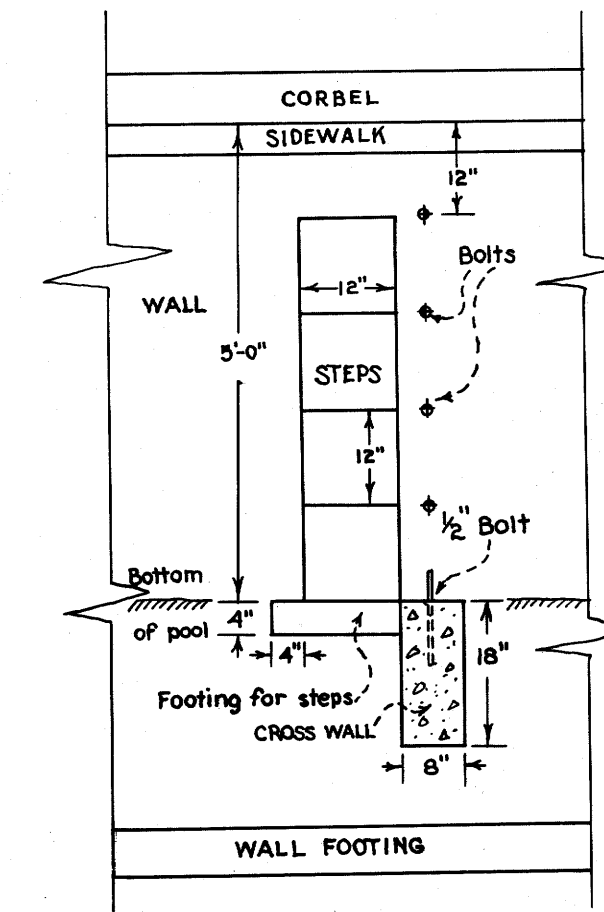
Height of pilaster above slab varies from 5'-4" at outlet end to 4'-10" at opposite end due to 6" slope of slab toward outlet side. Two end pilasters to project 6" from and be integral part of exterior wall.



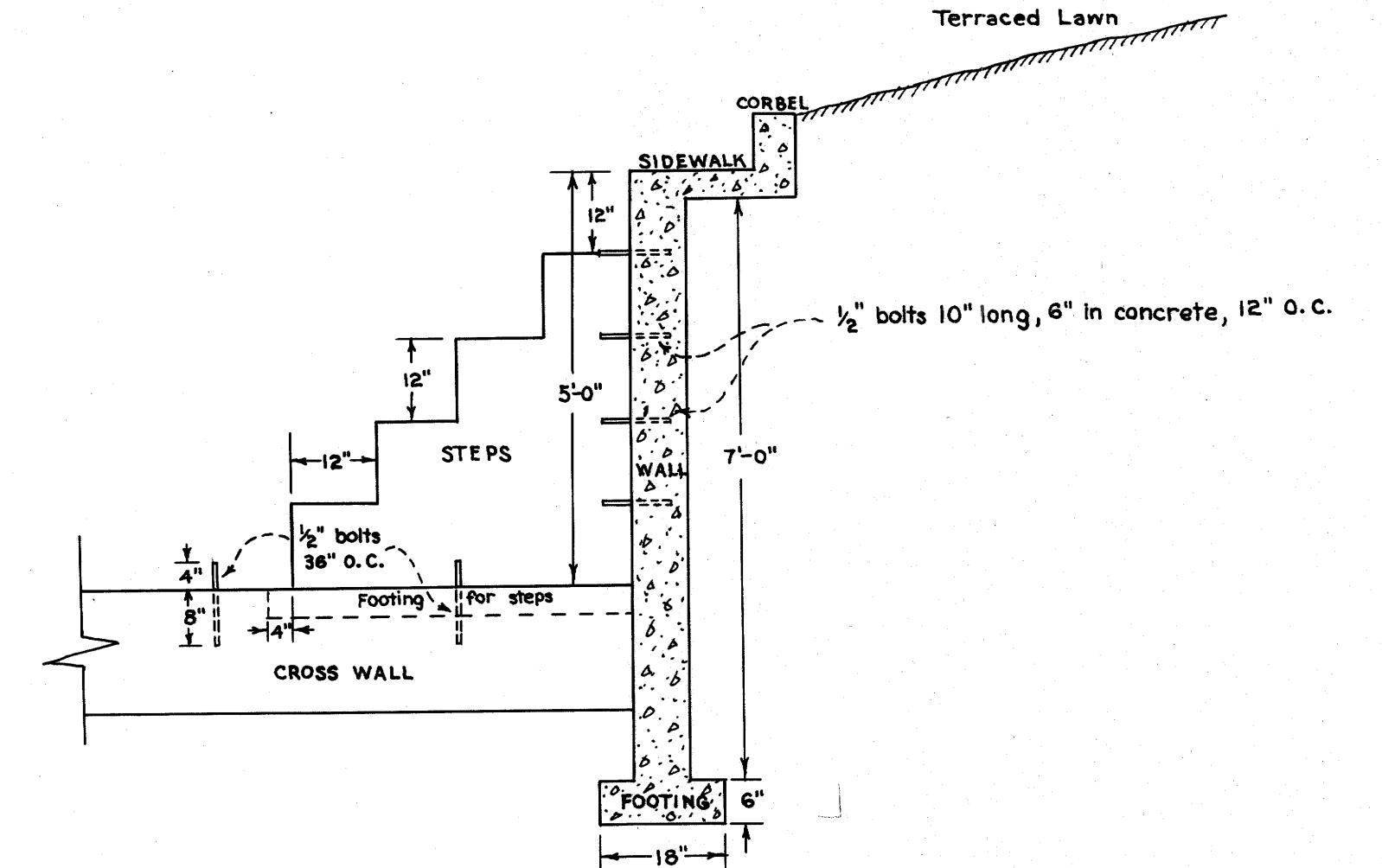
SECTION A-A AT OUTLET
Scale 1/2" = 1'-0"



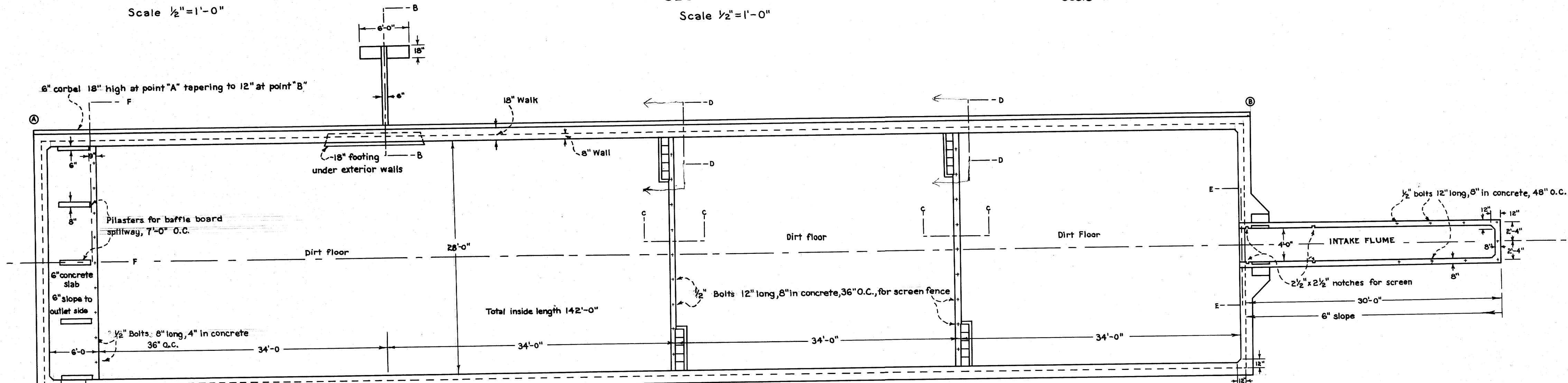
SECTION B-B
Scale 1/2" = 1'-0"



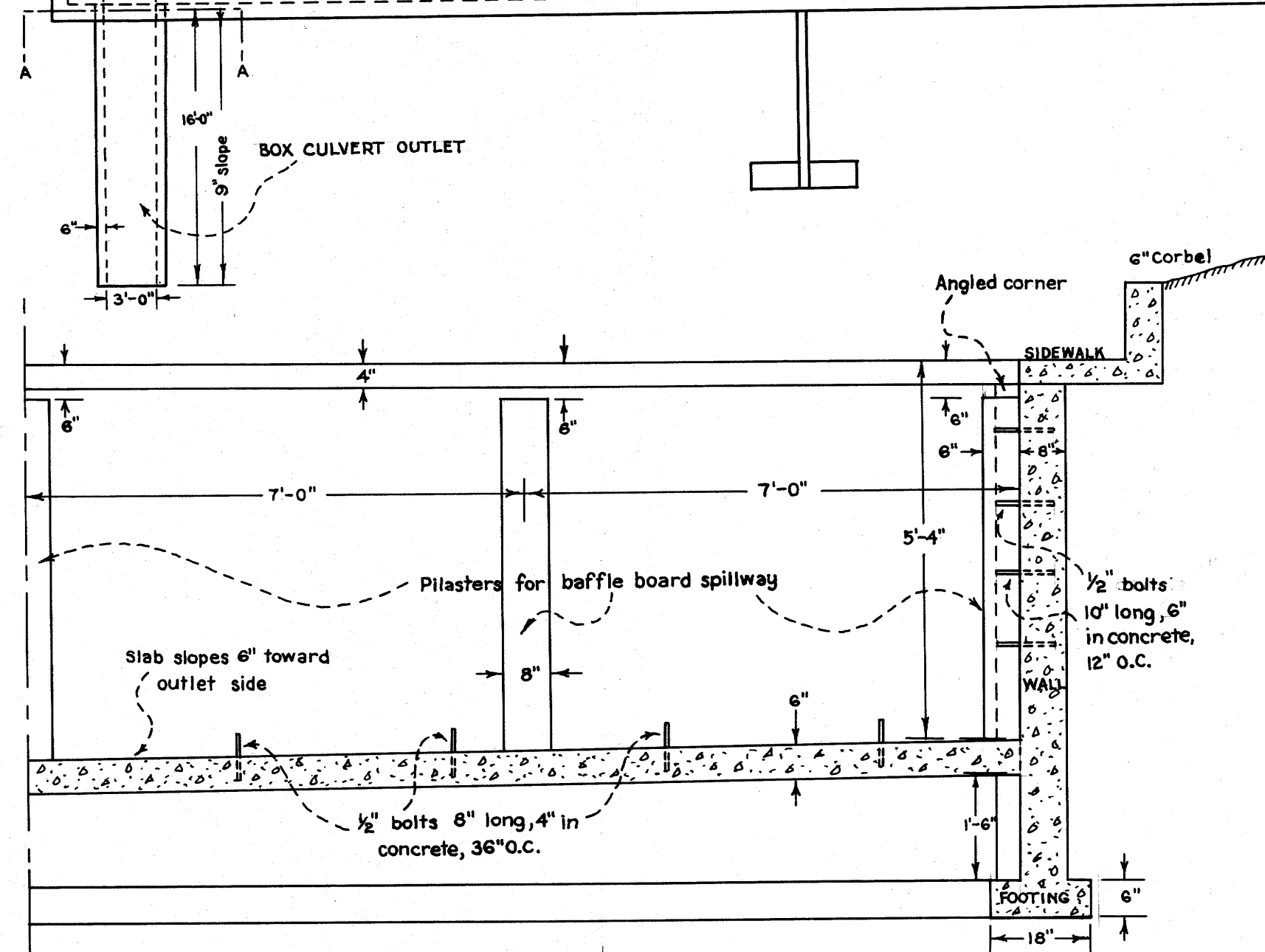
SECTION C-C
Scale 1/2" = 1'-0"



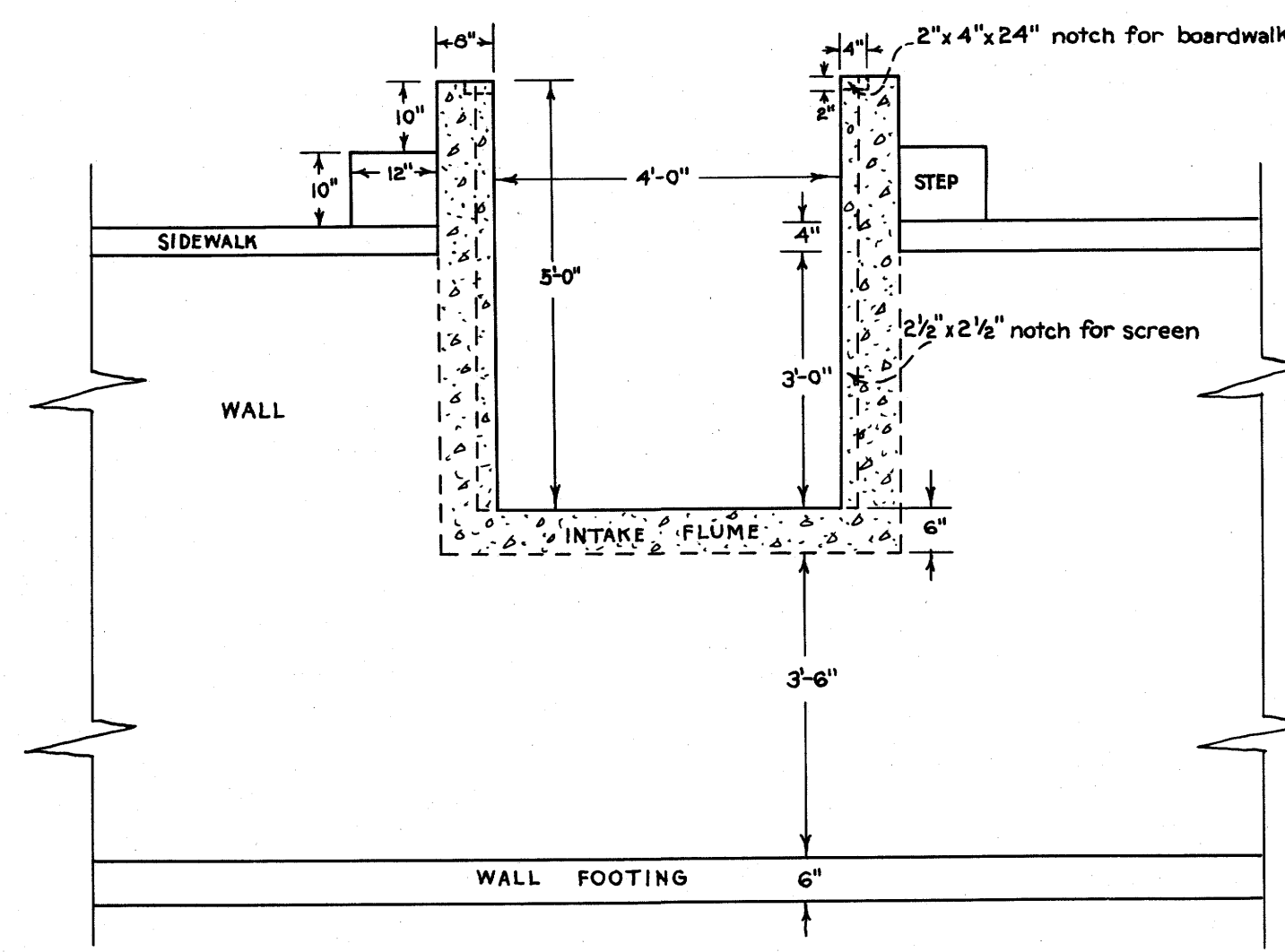
SECTION D-D
Scale 1/2" = 1'-0"



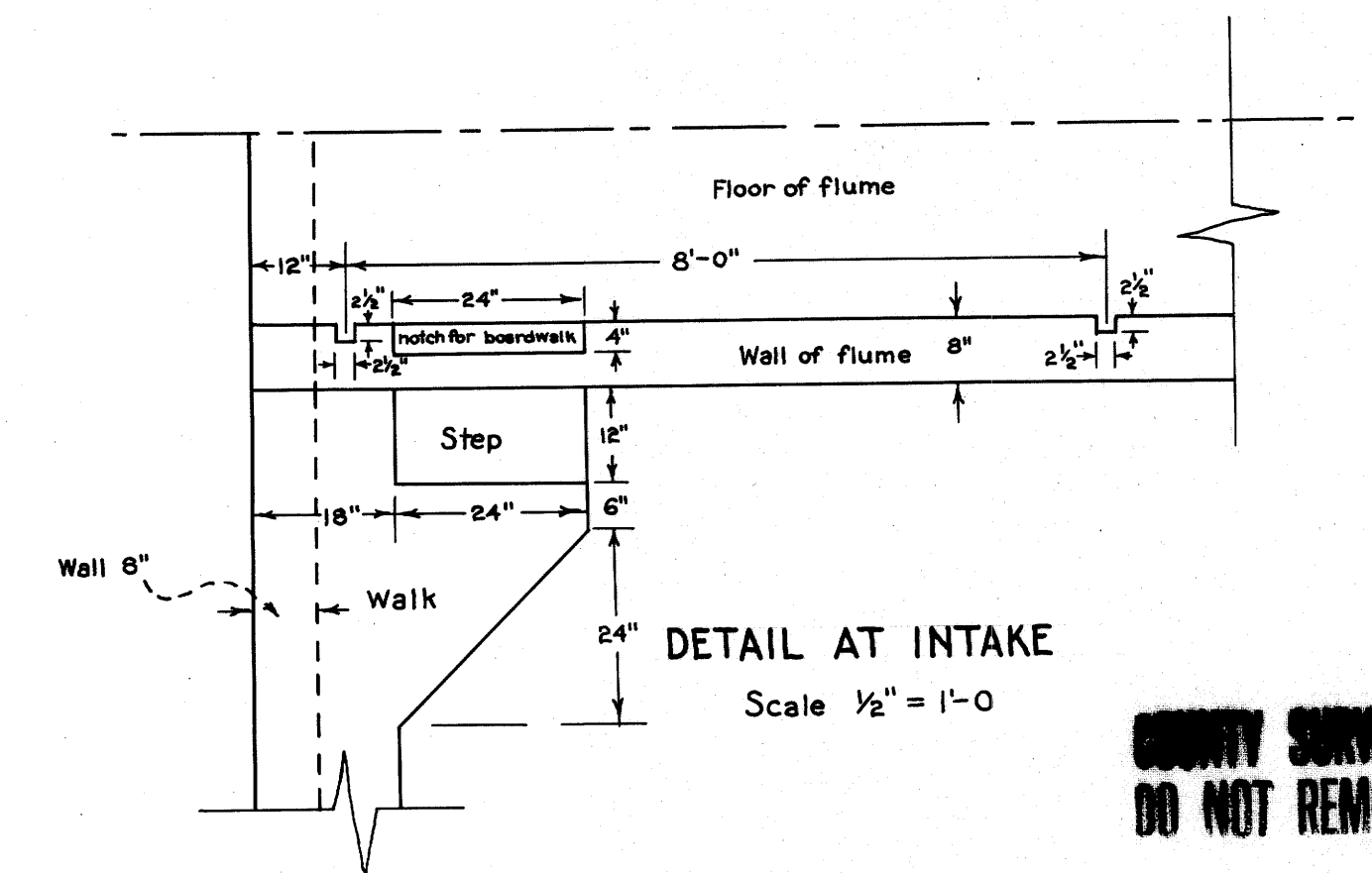
PLAN
Scale 1/8" = 1'-0"



SECTION F-F AT SPILLWAY
Scale 1/2" = 1'-0"



SECTION E-E AT INTAKE
Scale 1/2" = 1'-0"



DETAIL AT INTAKE
Scale 1/2" = 1'-0"

CONTRACT SURVEYORS FILE
DO NOT REMOVE FROM FILE

OFFICE OF H.L. EPPSTEIN & ARTHUR BOYER
ROSEBURG, OREGON

OREGON STATE GAME COMMISSION

FISH POND

ROCK CREEK FISH HATCHERY
DOUGLAS COUNTY, OREGON

DRAWN BY: W.R. Shaw
CHECKED BY: Arthur Boyer

APPROVED: _____
DATE: May 1937