

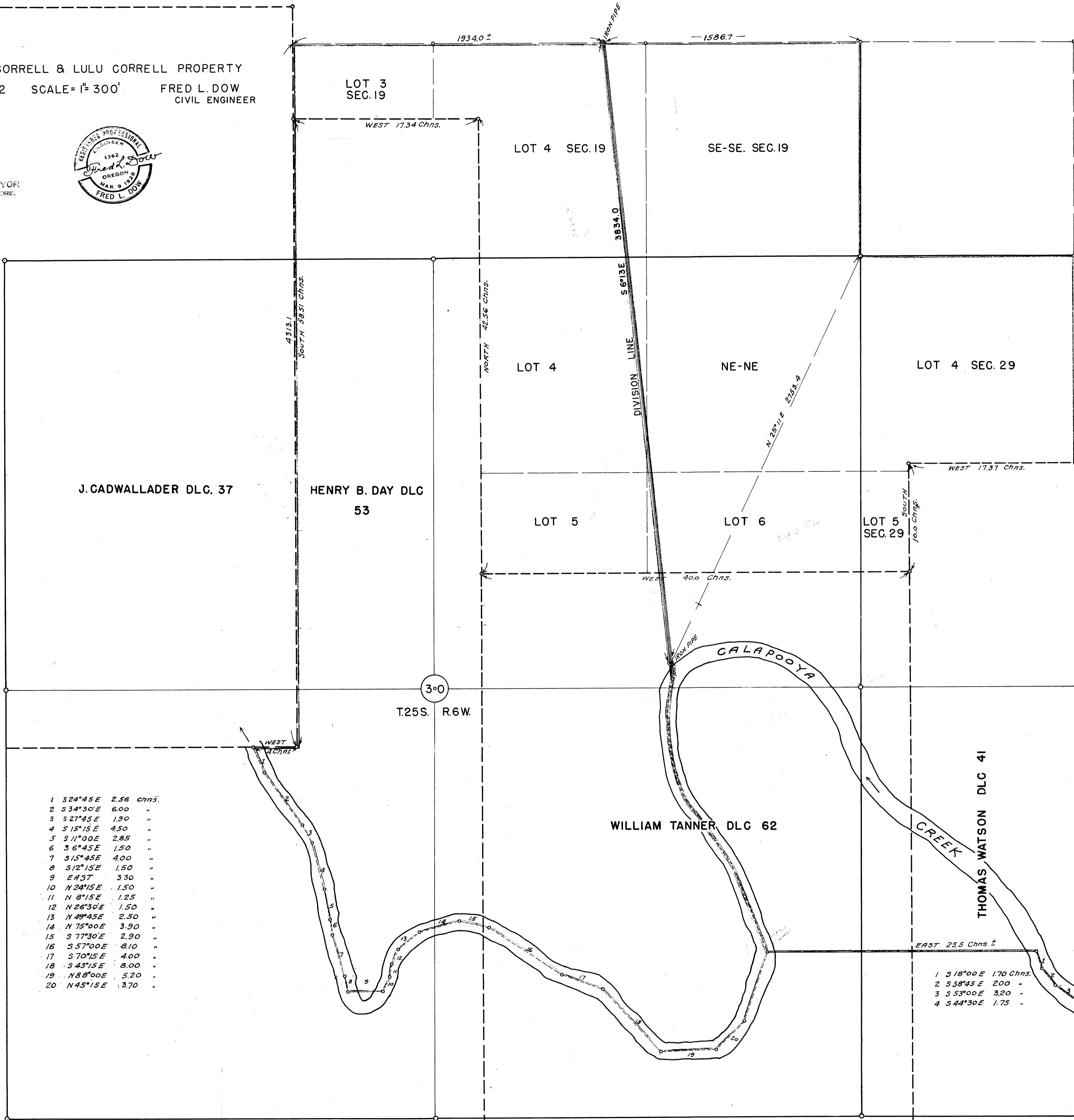
COUNTY SURVEYORS FILE DATA
DO NOT REMOVE FROM OFFICE

FRANK CORRELL & LULU CORRELL PROPERTY
MAY 1952 SCALE = 1" = 300' FRED L. DOW
CIVIL ENGINEER

FILED
RECEIVED

MAY 27 1952

COUNTY SURVEYOR
DOUGLAS COUNTY, ORE.



- 1 S 24°45' E 2.56 Chns.
- 2 S 34°30' E 6.00 "
- 3 S 27°45' E 1.90 "
- 4 S 15°15' E 4.50 "
- 5 S 11°00' E 2.85 "
- 6 S 6°45' E 1.50 "
- 7 S 15°45' E 4.00 "
- 8 S 12°15' E 1.50 "
- 9 EAST 3.30 "
- 10 N 24°15' E 1.50 "
- 11 N 8°15' E 1.25 "
- 12 N 26°30' E 1.50 "
- 13 N 49°45' E 2.50 "
- 14 N 75°00' E 3.90 "
- 15 S 77°30' E 2.90 "
- 16 S 57°00' E 8.10 "
- 17 S 70°15' E 4.00 "
- 18 S 43°15' E 8.00 "
- 19 N 88°00' E 5.20 "
- 20 N 45°15' E 3.70 "

- 1 S 18°00' E 1.70 Chns.
- 2 S 38°45' E 2.00 "
- 3 S 53°00' E 3.20 "
- 4 S 44°30' E 1.75 "

COUNTY SURVEYORS FILE DATA
DO NOT REMOVE FROM OFFICE

C.S. File 41/48
M11-12