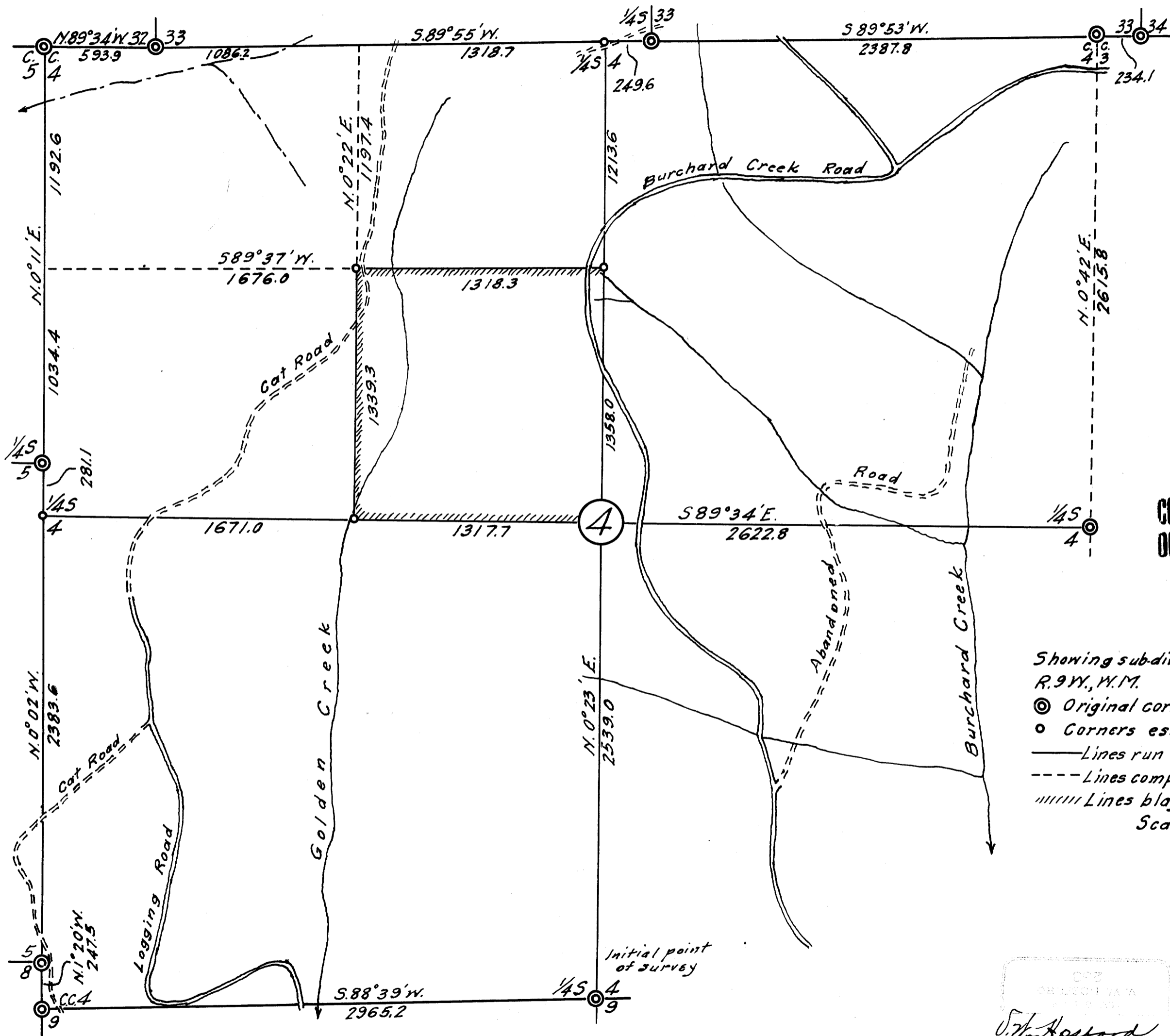


FILED
RECEIVED

SEP 22 1954

COUNTY SURVEYOR
DOUGLAS COUNTY, ORE.

MAP FILE M 10 - 80



COUNTY SURVEYORS FILE DATA
DO NOT REMOVE FROM OFFICE

MAP

Showing subdivision of sec. 4, T. 22 S.,
R. 9 W., W. 1 M.

⊙ Original corners found

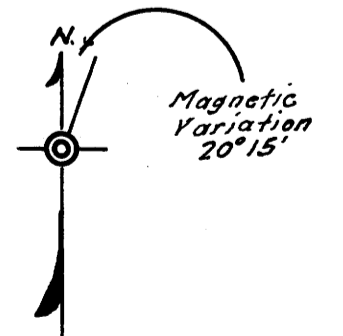
○ Corners established

— Lines run

- - - Lines computed

||||| Lines blazed

Scale 1" = 500'



U. H. Hoeford
COUNTY SURVEYOR

FILED
RECEIVED

SEP 22 1954

COUNTY SURVEYOR
DOUGLAS COUNTY, ORE.

T. 22 S., R 9 W., W. M.
Subdivision Section 4

Preparatory to logging operations in that area, Evans Products Co., sought to establish the boundaries of the S. E. 1/4 of the N. W. 1/4 of Section 4, T. 22 S., R 9 W., W. M.

On August 10, 1954, I began at the 1/4 corner common to sections 4 & 9.

This corner is marked by a 3/4 in. iron pipe with cap marked 1/4 S $\frac{4}{9}$. The original B. T. for Section 4 is dead and down, with scribing visible. The original B. T. for section 9 is a burned stump, badly decayed, no scribing could be found.

From this corner I run S 88°39' W., variation 20°15', on true line between Sections 4 & 9. At 2965.2 ft. I find the closing corner to Sections 4 & 9, at which point I set a 3" fir post marked C.C. S 4 & 9. The 2 original fir B.T.'s are dead, but standing. No evidence could be found of the oak.

From this corner I run N 1°20' W., variation 20°15', on the true line between sections 4 & 8. At 247.5 ft. I find the corner to sections 5 & 8. This corner is marked by a 4" fir post. All original B. T. 's were found, all dead except S.E. which is a living 10" tree. Scribing has not been destroyed on trees for Sections 4 & 9.

From this corner I run N 0°02' W., variation 20°15', on true line between Sections 4 & 5. At proportionate distance of 2383.6 ft. I establish the West 1/4 S 4. At this corner I set a 4" fir limb post marked 1/4 S 4, P.S. 253, for which:

A fir 24" in diam. bears N 46° E. 56.9 ft. marked 1/4 S 4
PS 253 B.T.

A root of a 60" fir bears S 35° E 4.1 ft. marked 1/4 S 4
PS 253 B. T.

Thence I continue N 0°02' W.

C.S. FILE 41/292

At 281.1 ft. I find the East 1/4 S 5. At this corner I found the original stone corner and two original B.T.'s living.

From this corner I run N 0°11' E, on true line between sections 4 & 5.

At 2227.0 ft. I find the closing corner to sections 4 & 5. At this corner I found the original marked stone and 3 original B.T.'s

I then go to the corner 33/34, T. 21 S, R 9 W., W. M. This corner is marked by a 3/4" iron pipe. The original N.E. & S.E. B.T.'s are gone. The original S.W. B.T. is a 32" stump with overgrown scar. The original N.W. B.T. is living and shows a burned out scar.

From this corner I run S 89°53' W., variation 20°15', on true line between Sections 33 & 3.

At 234.1 ft. the closing corner to Sections 3 & 4 bears North 8.8 ft.

This corner is marked by a 1 1/2" iron pipe with cap marked S 33
S4/S3
The original S.E. B.T. is a living 36" tree with burned out scar. The other two original B.T.'s are gone.

From the point 8.8 ft. South of this corner I continue S 89°53' W on true line between Sections 33 & 4.

At 2387.8 ft. I find the South 1/4 S 33. At this corner I found a 3/4" iron pipe with cap marked 1/4 S 33. Original B.T. for section 33 is a stump with overgrown scar. Original B.T. for Section 4 is a 30" dead hemlock with burned scar.

From this corner I run S 89°55' W., variation 20°15' on true line between Sections 33 & 4.

At proportionate distance of 249.6 ft. I establish the North 1/4 S 4. At this corner I set a 4" fir post marked 1/4 S 4. PS 253, from which:

A fir 40" in diam. bears S 57° E, 87.0 ft. marked 1/4 S4
PS 253 B.T.

From this corner I continue S 89°55' W. on true line between sections 33 & 4.

At 2404.9 ft. I find the corner to sections 32 & 33. At this corner I found no trace of the original marked stone. The original marked N.E. B. T. is gone. The other 3 original B.T.'s are standing, but dead since the fire of 1951.

From this corner I run N $89^{\circ}34'$ W., variation $20^{\circ}15'$, on true line between sections 32 & 4. At 593.9 ft. I find the closing corner to sections 4 & 5, described above.

From the $1/4$ corner common to sections 4 & 9 I run N $0^{\circ}23'$ E, variation $20^{\circ}15'$, on true N & S center line of section 4.

At 2539.0 ft. I establish the center $1/4$ corner of section 4.

At this corner I set a $1\frac{1}{2}$ " iron pipe and a 4" hemlock post marked

$1/4$ S 4 PS 253, from which:
A dead fir 24" in diam. bears N $72^{\circ}0'E$ 55.6 ft. marked
 $1/4$ S 4 PS 253 B.T.
A fir stump 48" in diam bears S $29\frac{1}{2}^{\circ}W$ 26.8 ft. marked
 $1/4$ S 4 PS 253 B.T.

At 3897.0 ft. I establish the CN. $1/16$ S 4. At this corner I set a $1\frac{1}{2}$ " iron pipe and a 4" hemlock post marked C N $1/16$ S 4 PS 253, from which:

A dead hemlock 20" in diam. bears N $61^{\circ}E$ 27.3 ft. marked
C N $1/16$ S 4 PS 253 B.T.

A fir stump 72" in diam bears N $89^{\circ}W$. 39.3 ft. marked
C N $1/16$ S 4 PS 253 B.T.

At 5110.6 ft. the North $1/4$ S 4, described above.

From the West $1/4$ S 4 I run S $89^{\circ}34'$ E., variation $20^{\circ}15'$ on the true E & W center line of section 4.

At 1671.0 ft. I establish the C.W. $1/16$ S 4. At this corner I set a 4" fir post marked C W $1/16$ S 4 PS 253, from which:

A maple 16" in diam. bears N $30^{\circ}E$. 50.0 ft. marked
CW $1/16$ S 4 PS 253 B.T.

A fir 48" in diam. bears N $56\frac{1}{2}^{\circ}W$. 50.5 ft. marked CW $1/16$ S 4
PS 253 B.T.

At 2988.7 ft. the center $1/4$ S 4, described above.

At 5611.5 ft. the East $1/4$ S 4. At this corner I found a 4" hemlock post. The original B.T. for section 5 is a badly burned and decayed stump. The original B. T. for section 4 is a dead stump with overlay of scribing visible.

From the C.W. $1/16$ S 4 I run N $0^{\circ}22'$ E., variation $20^{\circ}15'$, on true N & S center line of the N. W. $1/4$ of section 4.

At 20 ft. Golden Creek flows S $30^{\circ}W$. At 1070 ft. a cat road on summit of ridge N $20^{\circ}E$ & S $20^{\circ}W$. At 1339.3 ft. I establish the N.W. $1/16$ S 4. At this corner I set a 4" fir post marked N W $1/16$ S 4 PS 253, from which:

A fir 24" in diam. bears S $25\frac{1}{2}^{\circ}E$. 86.1 ft. marked NW $1/16$ S 4
PS 253 B.T.

A dead fir 30" in diam. bears N 73^o W. 15.0 ft. marked
N W. 1/16 S 4 PS 253 B. T.

From the C.N 1/16 S 4 described above, I run S 89^o37' W, variation 20^o15'
on true E & W center line of the N.W. 1/4 of section 4.

At 70 ft. Burchard Creek road N & S. At 630 ft. summit of ridge
N & S. At 1140 ft. Golden Creek flows South. At 1290 ft. cat road on
summit of ridge N & S. At 1318.3 ft. the N. W. 1/16 S 4, described
above.

Survey completed August 27, 1954.

