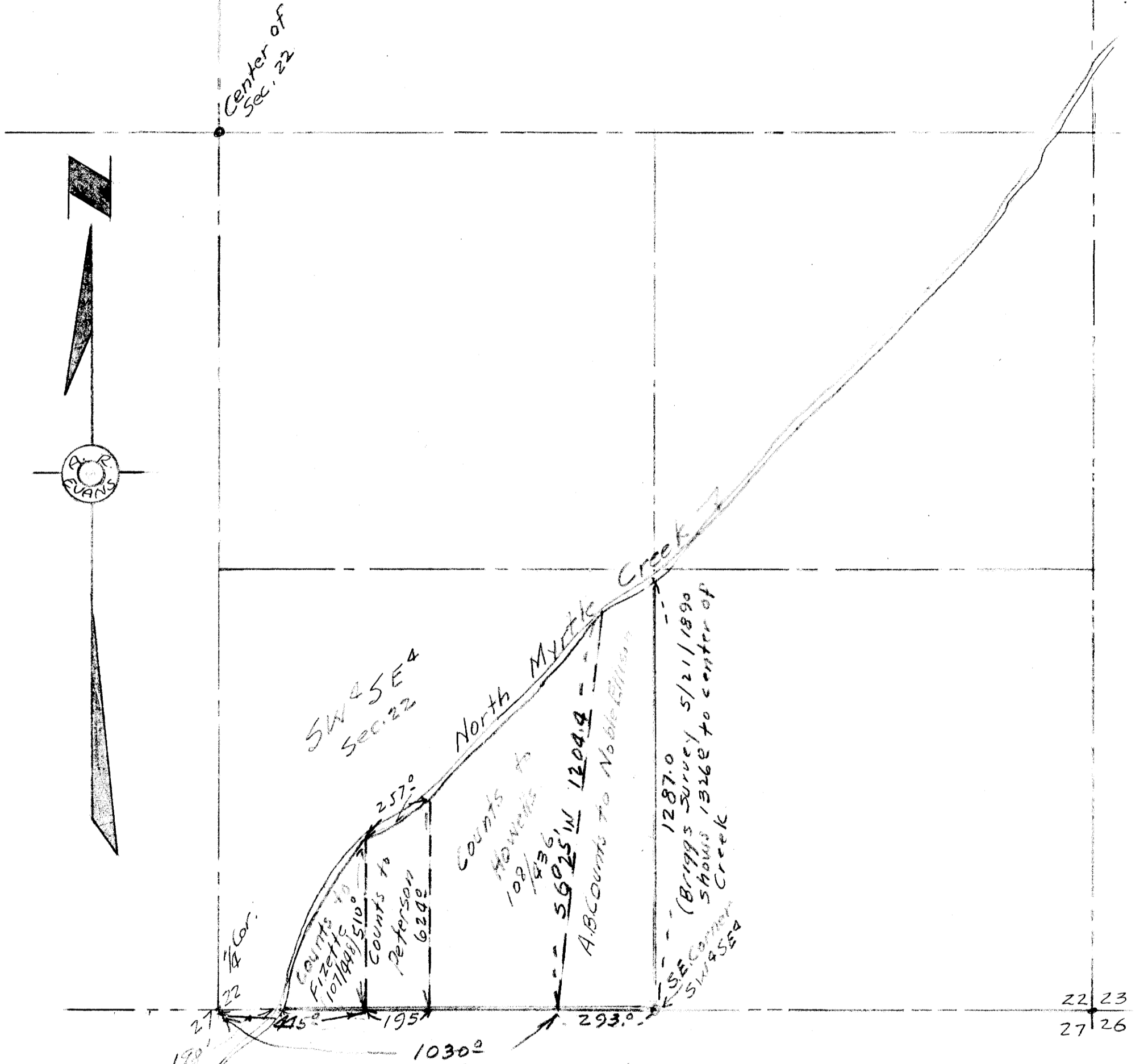


COUNTY SURVEYORS FILE DATA
DO NOT REMOVE FROM OFFICE



Note: Platted from Deed Records as noted, from original Government survey; and from W.F. Briggs survey for Seleg & Metz 5/21/1890.

Deed from Counts to Fizette gives length of South line as 505 ft. This is manifestly impossible, since the distance from $1/4$ cor. to Fizette S.E. cor. is 445 ft, and the center of North Myrtle Creek is Fizette's West line. Original Govt survey shows center of creek as being 191 ft East of $1/4$ corner

PLAT OF
A.B. COUNTS PROPERTY
SECTION 22, T29S, R5W, W.M.
DOUGLAS COUNTY, ORE.

OFFICE OF BEN B. IRVING
COUNTY SURVEYOR
PLATTED BY A.R. EVANS
NOV. 10, 1947
SCALE 1 inch = 5 chains