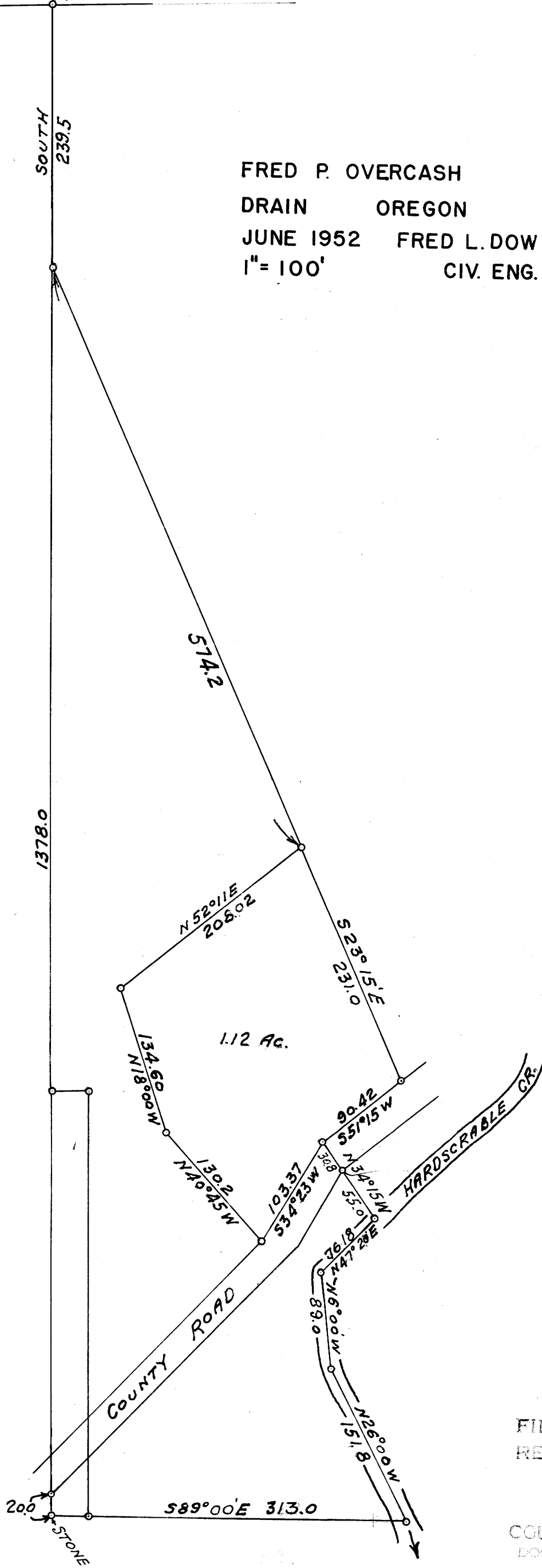


7

N.W. COR. SW 1/4 NE 1/4  
SEC. 12 T. 22 S. R. 6 W.

SOUTH  
239.5

FRED P. OVERCASH  
DRAIN OREGON  
JUNE 1952 FRED L. DOW  
1" = 100' CIV. ENG.



FILED  
RECEIVED  
JUN 17 1952  
COUNTY SURVEYOR  
DOUGLAS COUNTY, ORE.

COUNTY SURVEYORS FILE DATA  
DO NOT REMOVE FROM OFFICE