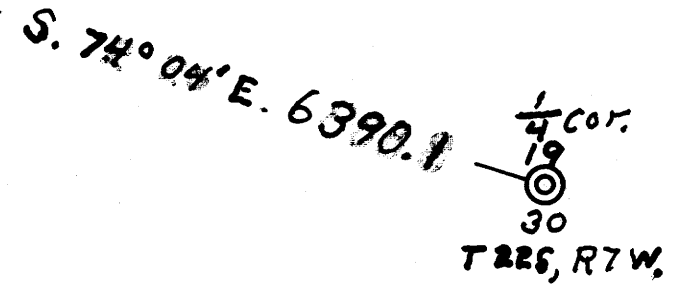
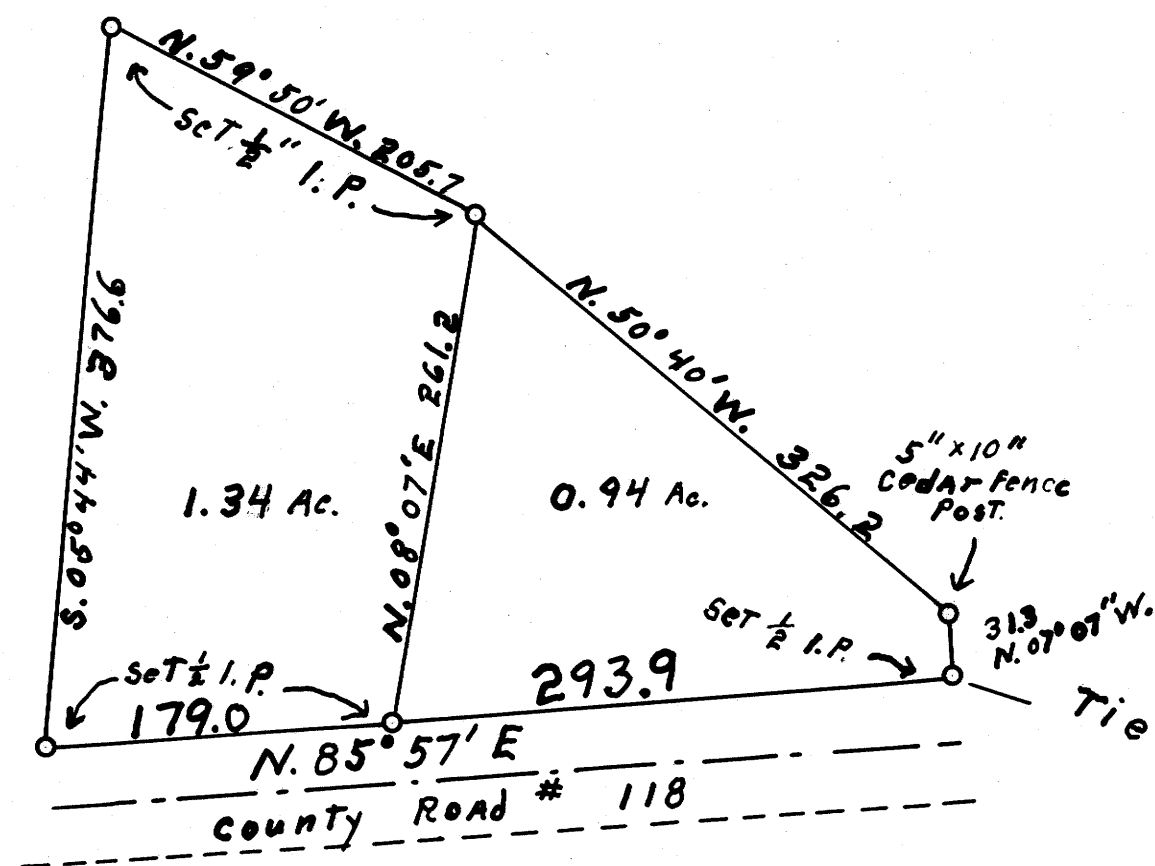


M10-74

Bearings are based on a survey made by The County Surveyors Office in Sect. 24. , January 1951.



SURVEY FOR DEED DESCRIPTION
 IN SECTION 24, T22S., R8W., WM.
 DOUGLAS COUNTY OREGON

Surveyed Sept. 1953 SCALE 1" = 100'



REGISTERED
 OREGON
 LAND SURVEYOR
Wilford N. Haines
 MAY 7, 1948
 WILFORD N. HAINES
 239

FILED
 RECEIVED
 JAN 27 1953
 COUNTY SURVEYOR
 DOUGLAS COUNTY, OR

C. S. File No. 42/124

M10-74

MAP FILE M-10-74

MD