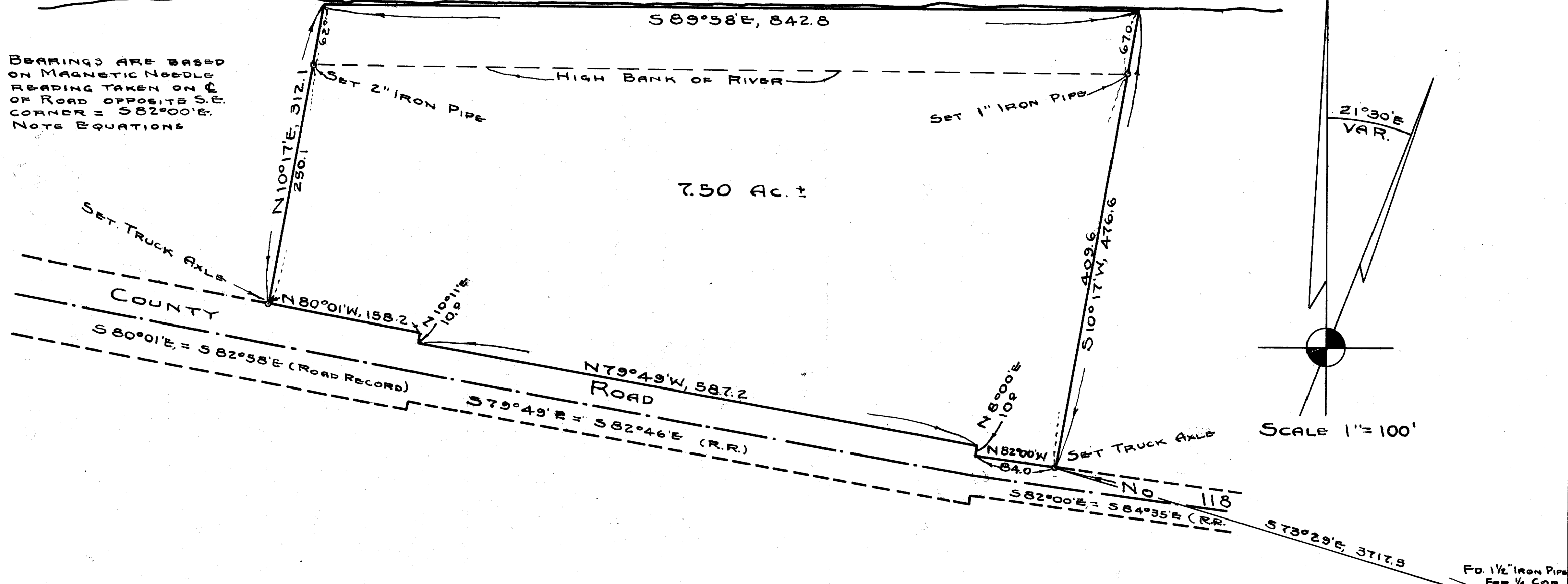


C.S. FILE 99/81
M/10-73

UMPQUA RIVER



COUNTY SURVEYOR'S OFFICE DOUGLAS COUNTY OREGON SURVEY FOR DEED DESCRIPTION IN SECTION 24, T22S, R8W, WM.

REGISTERED
OREGON
LAND SURVEYOR

JULY 7, 1944
N. E. RICHARDSON
35

BEN B. IRVING COUNTY SURVEYOR
SURVEYED, JANUARY, 1951, BY
N. E. RICHARDSON DEPUTY

COUNTY SURVEYORS FILE DATA
DO NOT REMOVE FROM OFFICE

54-01 W