



FILED
RECEIVED

NOV 2 1955

COUNTY SURVEYOR
DOUGLAS COUNTY, ORE.

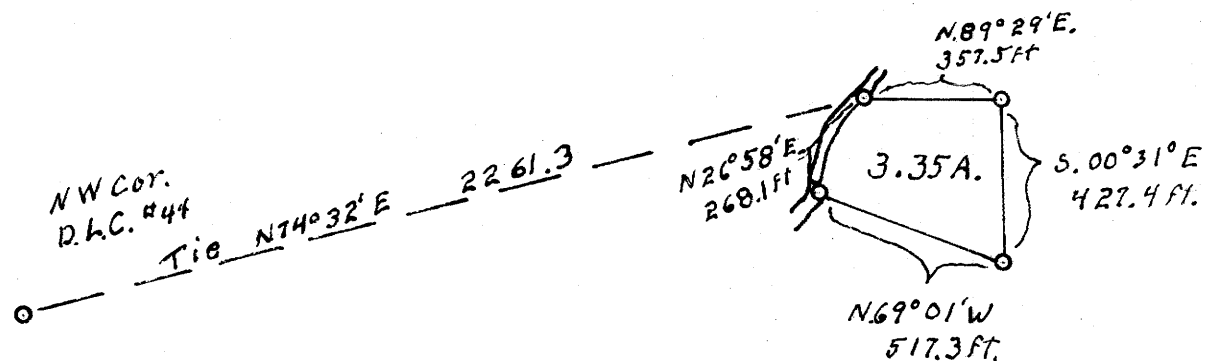
T. 22 S., R. 8 W. WM. DOUGLAS COUNTY, OREGON

Survey for deed discription

for Fred Riley

Scale 1" = 500'

August 1955



Lot markers set at each corner marked
Survey point-wilford N. Haines.
ANGLE IRON & BRASS CAP

REGISTERED
OREGON
LAND SURVEYOR

Wilford N. Haines

MAY 7, 1948
WILFORD N. HAINES
239

C.S. File No. 42/30
M10-70

MAY FILE M10-70

M10-70