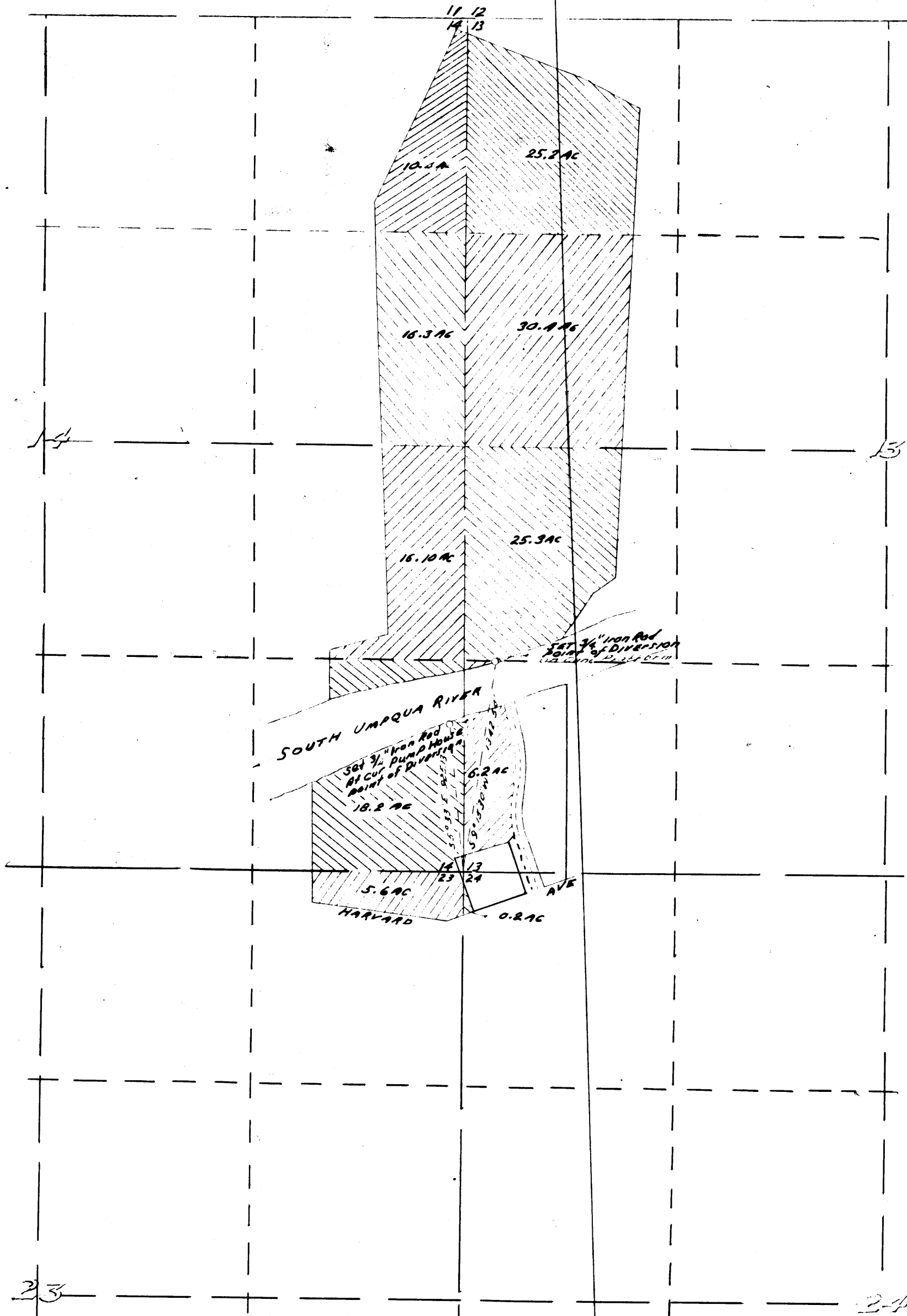


THIS COPY MADE FROM
A XEROX 2510
DATE 3-8-89



SCALE 8" = 1 MILE

JAMES W. BYRON, OF ROSEBURG, OREGON,
DO HEREBY CERTIFY THAT THIS MAP WAS MADE
FROM NOTES TAKEN DURING AN ACTUAL SURVEY
MADE BY ME ON APRIL 25, 9, 1958, THAT THE
MONUMENTS SHOWN ON THIS MAP CONSISTING
OF 2 3/4" IRON RODS ARE IN RELATION TO THE
CORNER OF SECS. 23, 24, 15 E 1/4 T. 2 S., R. 6 W. N. M.
AS SHOWN HEREOF.

James W. Byron

James W. Byron

WATER RIGHT
FOR
U. S. VETERANS ADMIN.
SECTIONS 13, 14, 23, 24 T. 27 S., R. 6 W. W. M.

OFFICE OF
FRED M. DARBY
COUNTY SURVEYOR, DOUGLAS COUNTY
ROSEBURG, OREGON

CS FILE FOLDER

CONTAINS

MORE

INFORMATION