

**COUNTY SURVEYORS FILE DATA
DO NOT REMOVE FROM OFFICE**

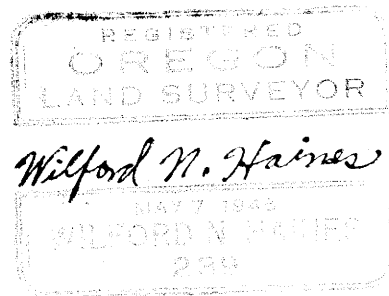
Survey For Deed Discription

D.L.C. #44, Sect. 21, T. 22. S., R. 8 W. WM.

Scale 1" = 50'

Oct. 1955

*Note ○ set 36" angle irons with brass-cap
marked - Survey point - Wilford N. Haines
239*

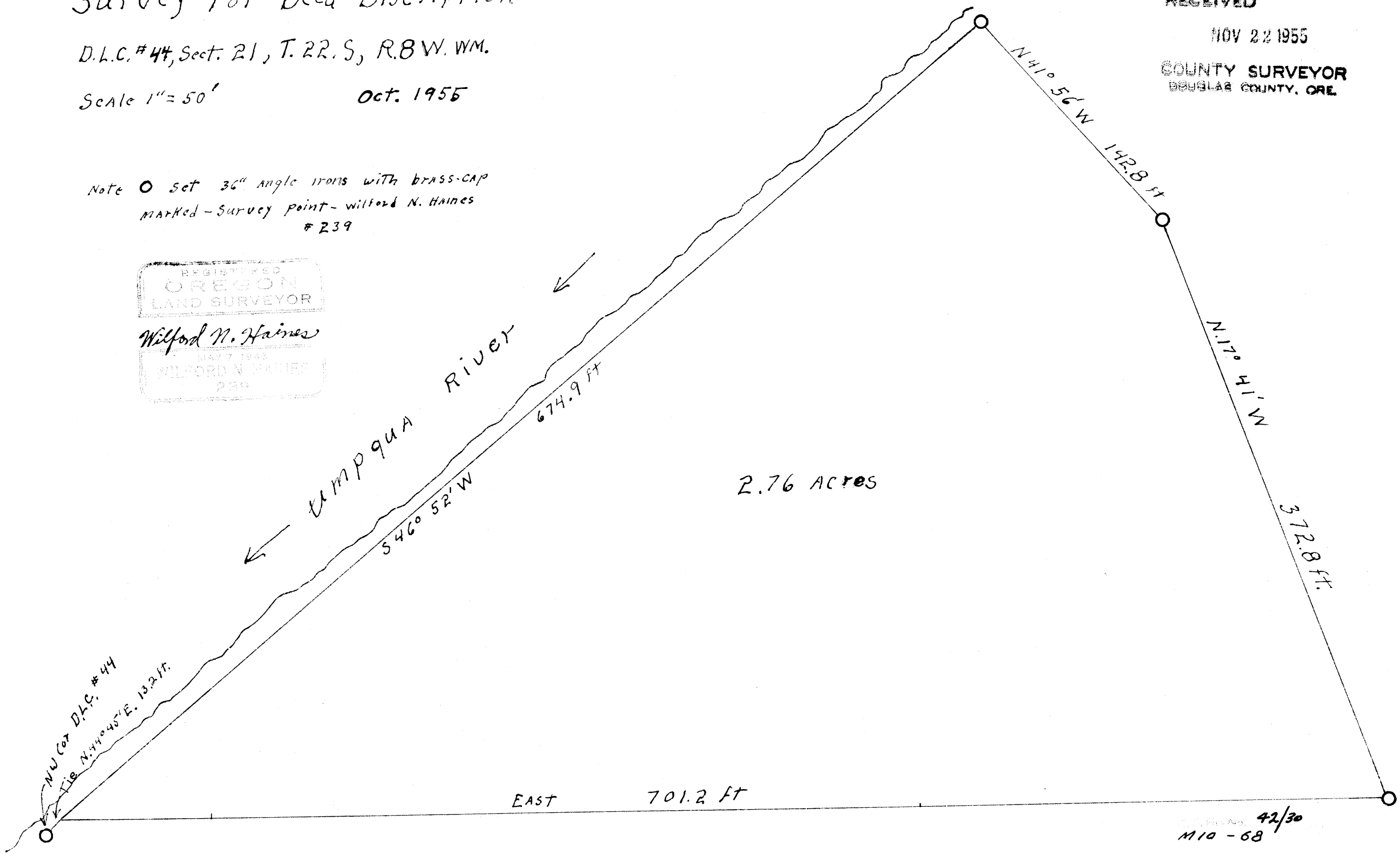


**FILED
RECEIVED**

NOV 22 1955

**COUNTY SURVEYOR
DOUGLAS COUNTY, ORE.**

89-01 W



42/30
M10-68

DONE FOR FRED RILEY

89-01 W