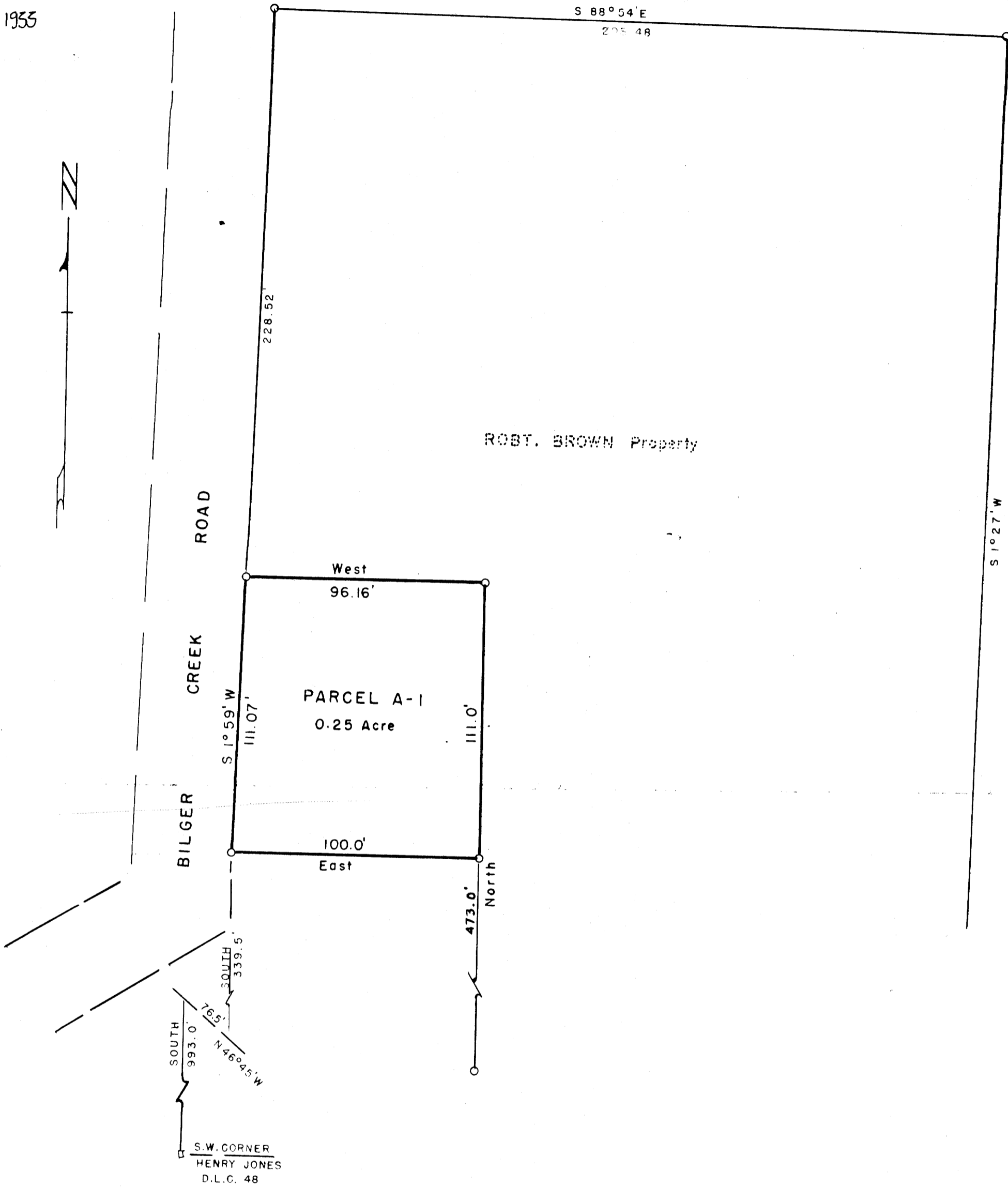


S9 -01 W
SS/24 S'D

FILED
RECEIVED

DEC 30 1955



PLAT OF PART OF
ROB'T BROWN Property
 Showing PARCEL A-1 in D.L.C. 48-T29S-R5W W.M.
 Douglas Co., Ore. Oct. 1954 Scale 1"=40'

**COUNTY SURVEYORS FILE DATA
 DO NOT REMOVE FROM OFFICE**

Handwritten signature

THIS COPY MADE FROM
 A XEROX 2510
 DATE 3-16-89

C.S. 42/55
 MAP FILE M10-65