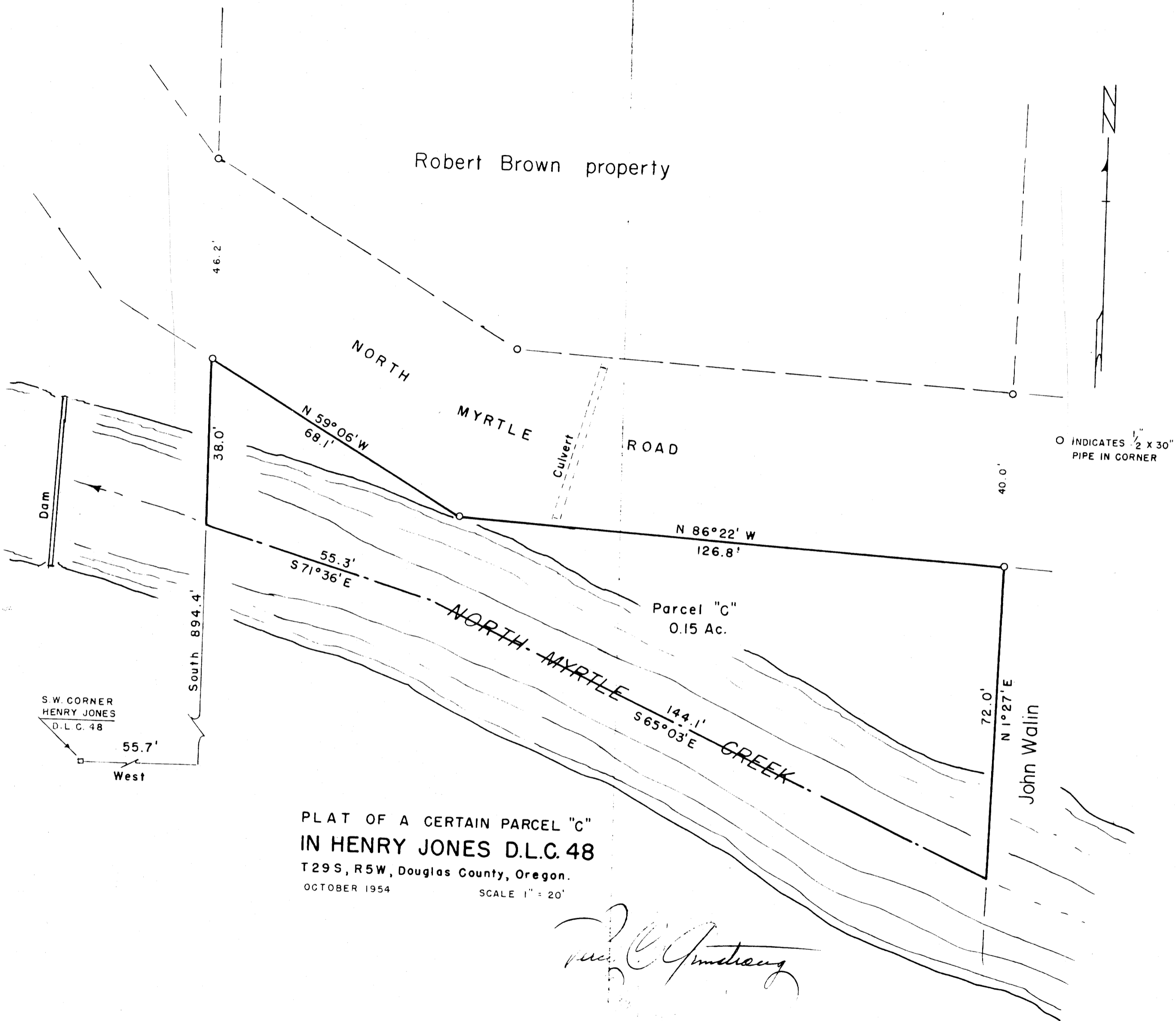


C.S. 42 48
M10 64



PLAT OF A CERTAIN PARCEL "C"
 IN HENRY JONES D.L.C. 48
 T29S, R5W, Douglas County, Oregon.
 OCTOBER 1954 SCALE 1" = 20'

W. C. Armstrong

THIS COPY MADE FROM
 A XEROX 2510
 DATE 3-16-89

DEC 30 1955

COUNTY SURVEYOR
 DOUGLAS COUNTY, OREGON

COUNTY SURVEYORS FILE DATA
 (DO NOT REMOVE FROM OFFICE)

M10-64
 C.S. 42/48