

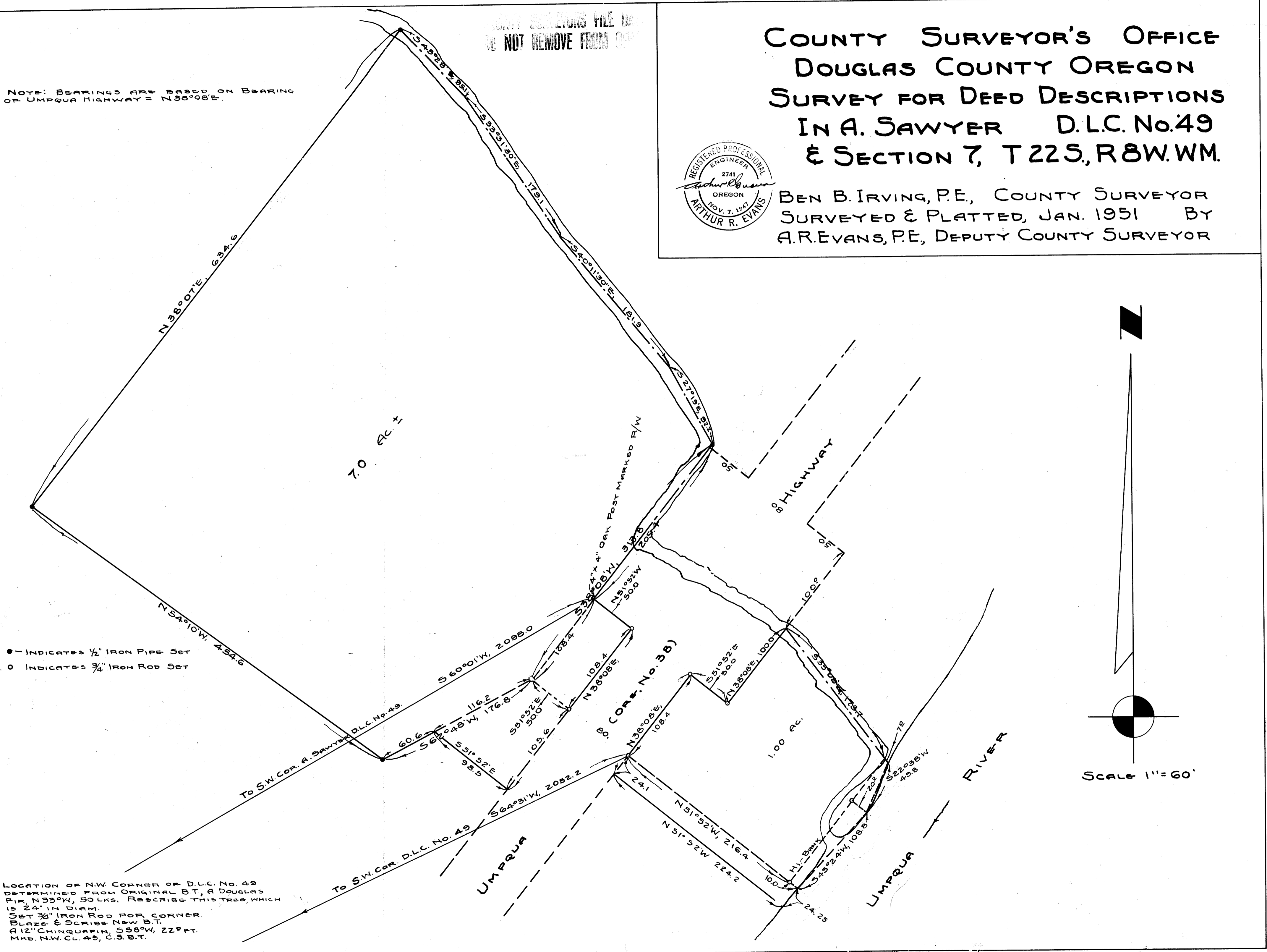
DEPUTY SURVEYORS FILE OR  
DO NOT REMOVE FROM OFFICE

# COUNTY SURVEYOR'S OFFICE DOUGLAS COUNTY OREGON SURVEY FOR DEED DESCRIPTIONS IN A. SAWYER D.L.C. No. 49 & SECTION 7, T22S, R8W, WM.

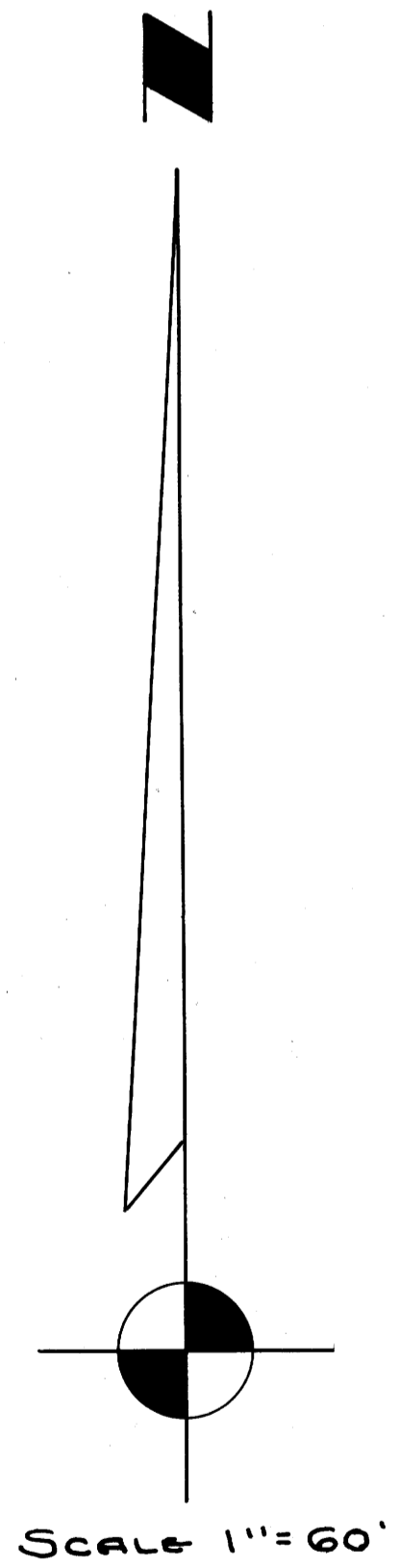


BEN B. IRVING, P.E., COUNTY SURVEYOR  
SURVEYED & PLATTED, JAN. 1951 BY  
A.R. EVANS, P.E., DEPUTY COUNTY SURVEYOR

NOTE: BEARINGS ARE BASED ON BEARING  
OF UMPQUA HIGHWAY = N38°08'E.



- INDICATES 1/2" IRON PIPE SET
- INDICATES 3/4" IRON ROD SET



LOCATION OF N.W. CORNER OF D.L.C. No. 49  
DETERMINED FROM ORIGINAL B.T., A DOUGLAS  
FIR, N33°W, 50 LKS. RESCRIBE THIS TREE, WHICH  
IS 24" IN DIAM.  
SET 3/4" IRON ROD FOR CORNER.  
BLAZE & SCRIBE NEW B.T.  
A 12" CHINQUAPIN, S58°W, 222 FT.  
MKB. N.W. CL. 49, C.S. B.T.