

REGISTERED
OREGON
LAND SURVEYOR

Wilford N. Haines

MAY 7, 1948
WILFORD N. HAINES
239

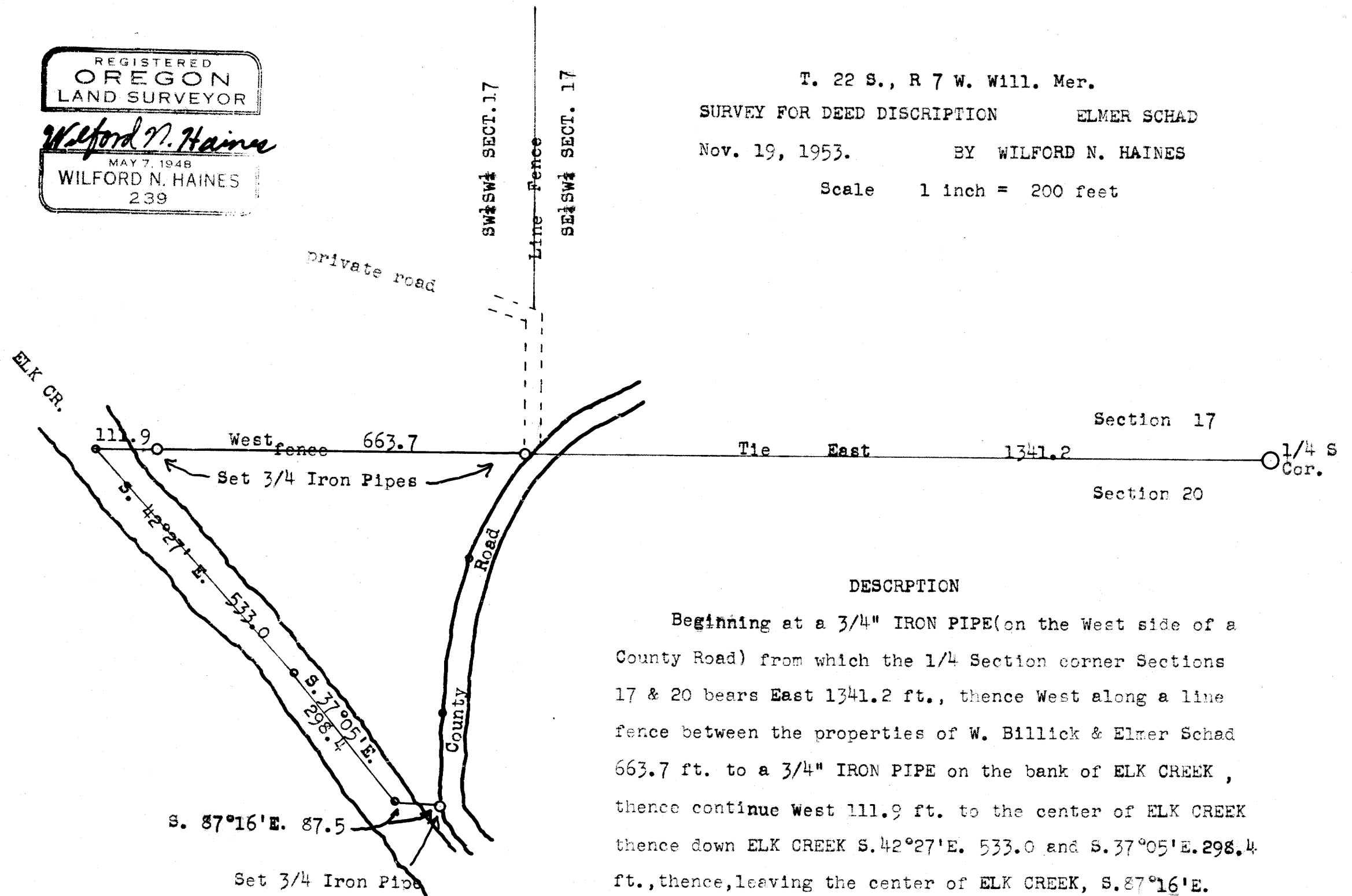
T. 22 S., R 7 W. Will. Mer.

SURVEY FOR DEED DISCRIPTION ELMER SCHAD

Nov. 19, 1953. BY WILFORD N. HAINES

Scale 1 inch = 200 feet

M 10-59



DESCRIPTION

Beginning at a 3/4" IRON PIPE (on the West side of a County Road) from which the 1/4 Section corner Sections 17 & 20 bears East 1341.2 ft., thence West along a line fence between the properties of W. Billick & Elmer Schad 663.7 ft. to a 3/4" IRON PIPE on the bank of ELK CREEK, thence continue West 111.9 ft. to the center of ELK CREEK thence down ELK CREEK S. 42°27' E. 533.0 and S. 37°05' E. 298.4 ft., thence, leaving the center of ELK CREEK, S. 87°16' E. 87.5 ft. to a 3/4" IRON PIPE on the West side of the County Road, thence meandering the West side of the road N. 02°44' E. 168.8 ft. to a point, thence N. 10°08' E. 274.9 to a point, thence N. 25°13' E. 216.9 ft. to the place of beginning, enclosing a parcel of land containing 5.37 Acres.

FILED
RECEIVED

JAN 27 1956

COUNTY SURVEYOR
DOUGLAS COUNTY, ORE.

COUNTY SURVEYORS FILE
DO NOT REMOVE FROM

65-014

JWB

C. S. File No. 42/123