

FILED  
RECEIVED

JUN 4 1958

COUNTY SURVEYOR  
DOUGLAS COUNTY, ORE.

COUNTY SURVEYORS FILE DATA  
DO NOT REMOVE FROM OFFICE

MAP FILE M10-34

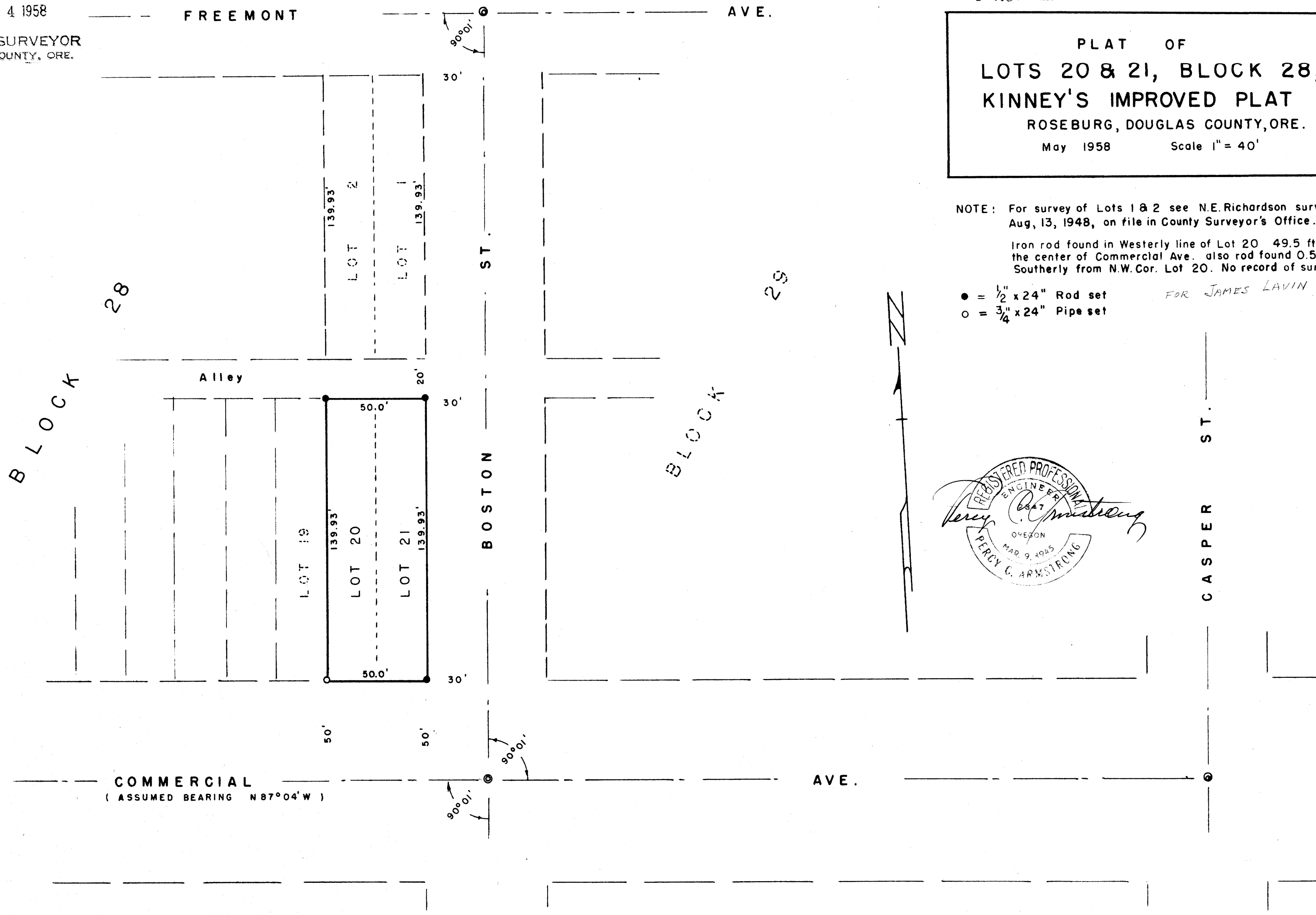
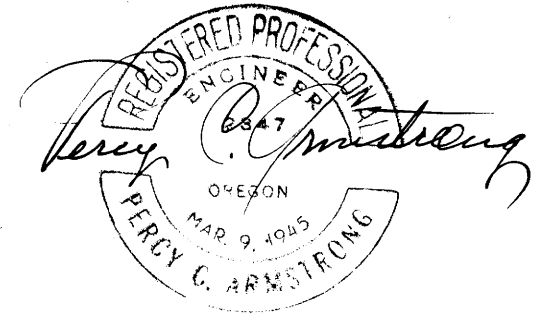
PLAT OF  
LOTS 20 & 21, BLOCK 28,  
KINNEY'S IMPROVED PLAT  
ROSEBURG, DOUGLAS COUNTY, ORE.  
May 1958 Scale 1" = 40'

NOTE: For survey of Lots 1 & 2 see N.E. Richardson survey of Aug, 13, 1948, on file in County Surveyor's Office.

Iron rod found in Westerly line of Lot 20 49.5 ft. from the center of Commercial Ave. also rod found 0.5' Southerly from N.W. Cor. Lot 20. No record of survey.

- = 1/2" x 24" Rod set
- = 3/4" x 24" Pipe set

FOR JAMES LAVIN



MAP FILE M10-34