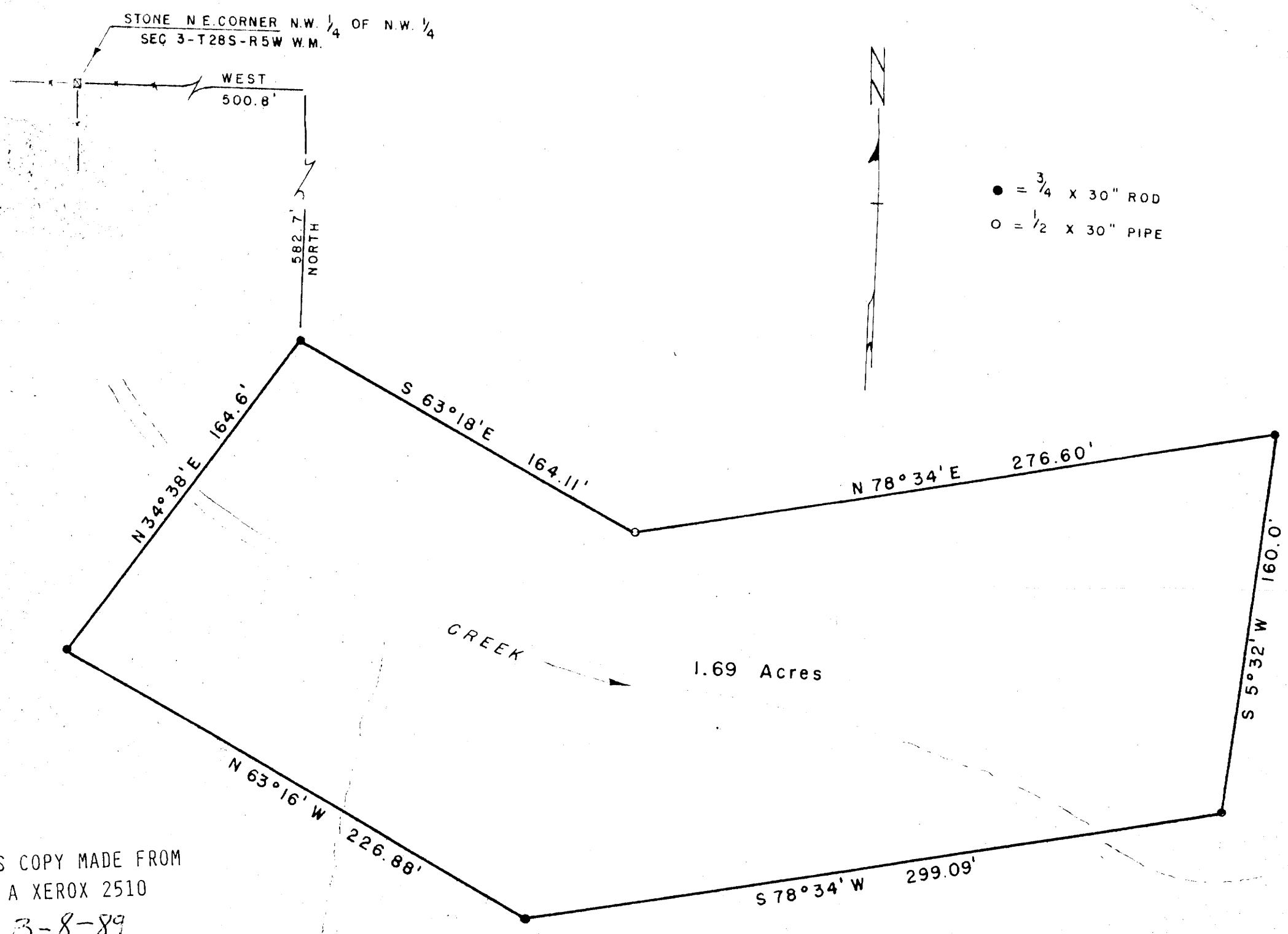


C.S. 42/366  
MAP FILE M.10-32



THIS COPY MADE FROM  
A XEROX 2510

DATE 3-8-89

FILED  
RECEIVED

JUN 4 1958

COUNTY SURVEYOR  
DOUGLAS COUNTY, ORE.

PLAT OF  
KNIGHTS OF PYTHIAS PICNIC GROUNDS  
IN SEC 3 - T28S - R5W W.M. DOUGLAS COUNTY, OREGON

AUGUST 1957

SCALE 1" = 50'

*Percy G. Armstrong*  
 REGISTERED PROFESSIONAL SURVEYOR  
 PERCY G. ARMSTRONG  
 DATE 2, 1945

COUNTY SURVEYORS FILE DATA

C.S. 42 366

M.10 32

M.10-32