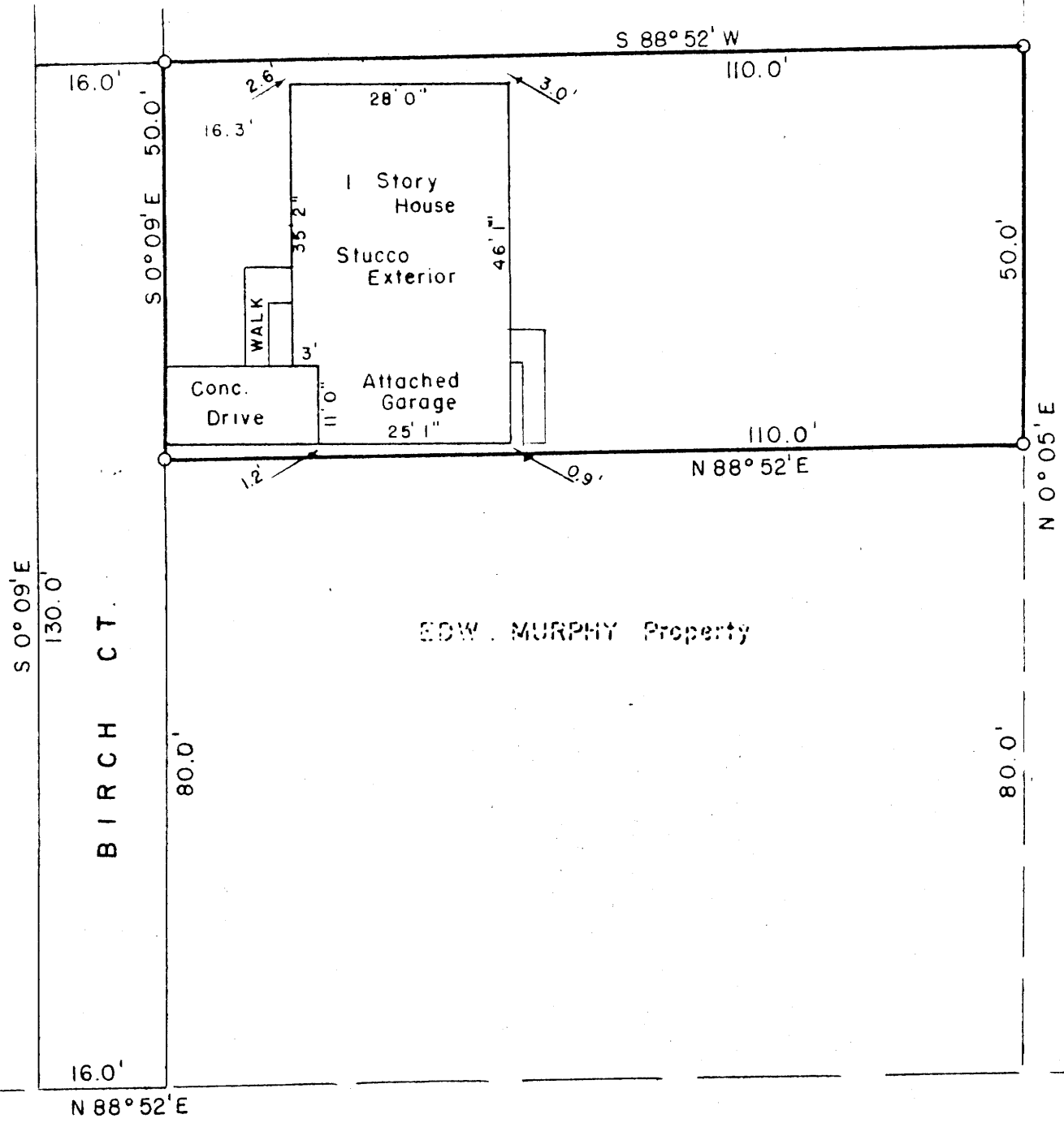


C.S. 42/358
MAP FILE M10-29

M 10 - 29



J.M. BOYLES Property

EDW. MURPHY Property

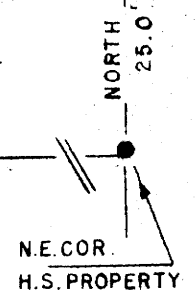
THIS COPY MADE FROM
A XEROX 2510
DATE 3-8-89

O = 1/2" x 30" PIPE SET

873.5'

FINLAY AVE.

BELLOWS ST.



PLAT OF
KENNETH A. HARRISON Property
IN N.W. ROSEBURG, DOUGLAS CO., ORE.

APRIL 1957

SCALE 1" = 20'



COUNTY SURVEYORS FILE DATA
DO NOT REMOVE FROM OFFICE

FILED
RECEIVED

JUN 4 1958

42 358

COUNTY SURVEYOR
DOUGLAS COUNTY, ORE.

M10-29

M 10 - 29