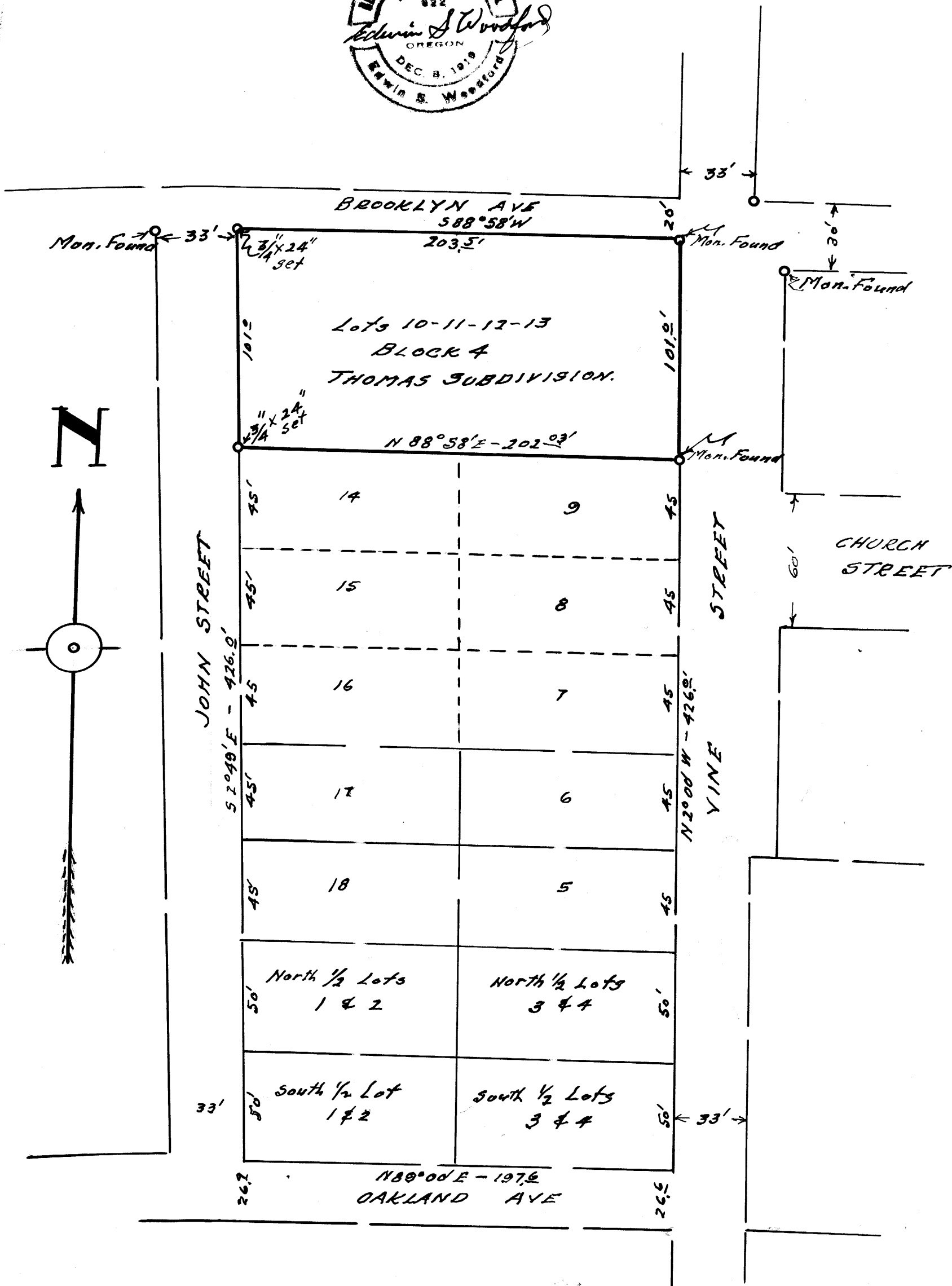


COUNTY SURVEYORS FILE DATA
DO NOT REMOVE FROM OFFICE



MAP
OF
SURVEY OF LOTS-10-11-12 & 13
BLOCK-4
THOMAS SUBDIVISION
ROSEBURG ORE.
Scale-1"=50' May 1958.

FILED
RECEIVED

MAY 26 1958

COUNTY SURVEYOR
DOUGLAS COUNTY, ORE.