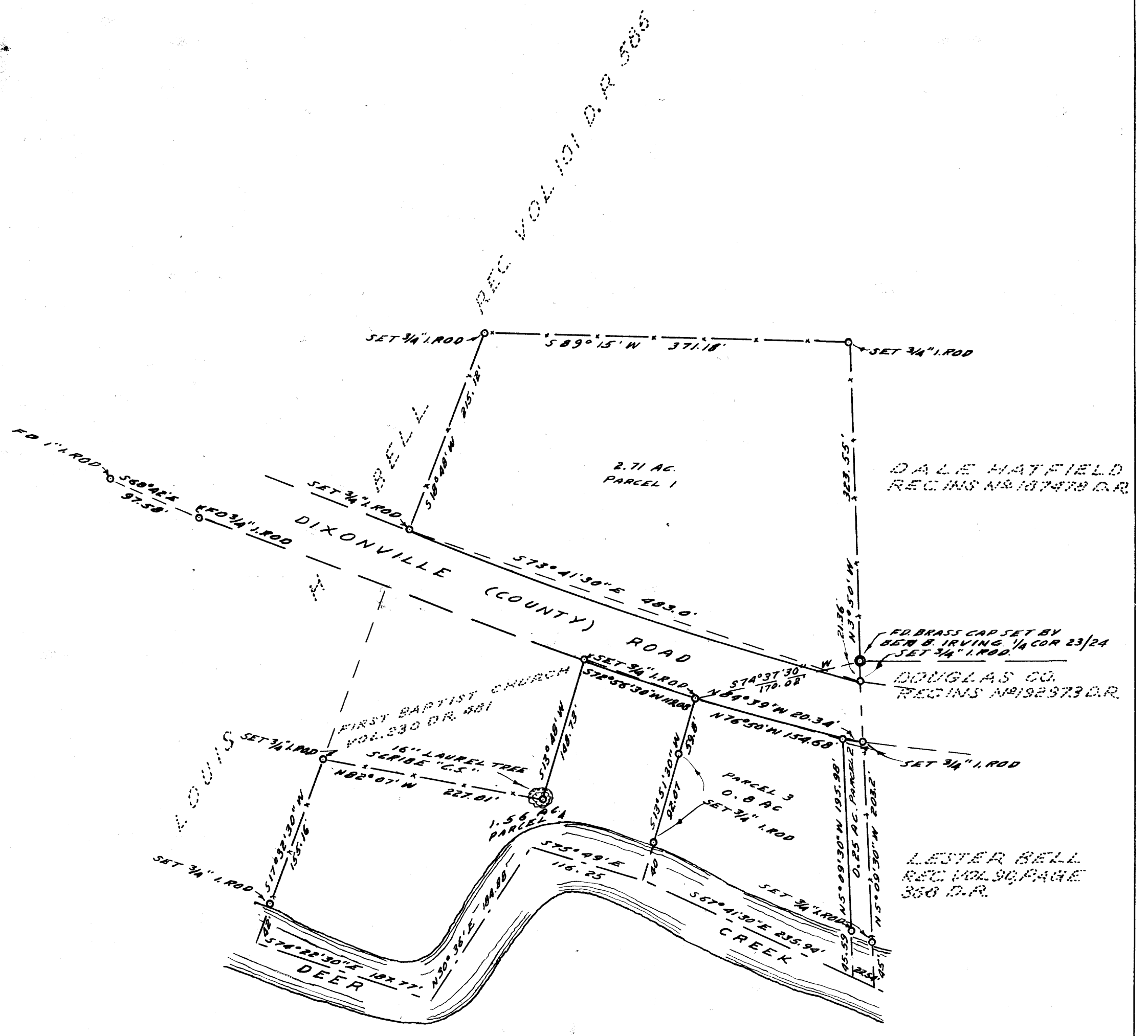


NOTE: BEARINGS BASED ON S88°42'E, AS PER C.S. FILE 47/150.



COUNTY SURVEYOR'S OFFICE
DOUGLAS COUNTY, OREGON

SURVEY FOR DEED DESCRIPTION
SECTION 23, T27S., R5W, W.M.

James W. Byron FRED M. DARBY COUNTY SURVEYOR
SURVEYED MAY 8, 1958 BY
JAMES W. BYRON - DEPUTY SCALE 1" = 100'
SURVEYED FOR HARRY I. COLLISON.

COUNTY SURVEYORS FILE DATA
DO NOT REMOVE FROM OFFICE

CS FILE FOLDER

CONTAINS

MORE

INFORMATION