

FILED
RECEIVED

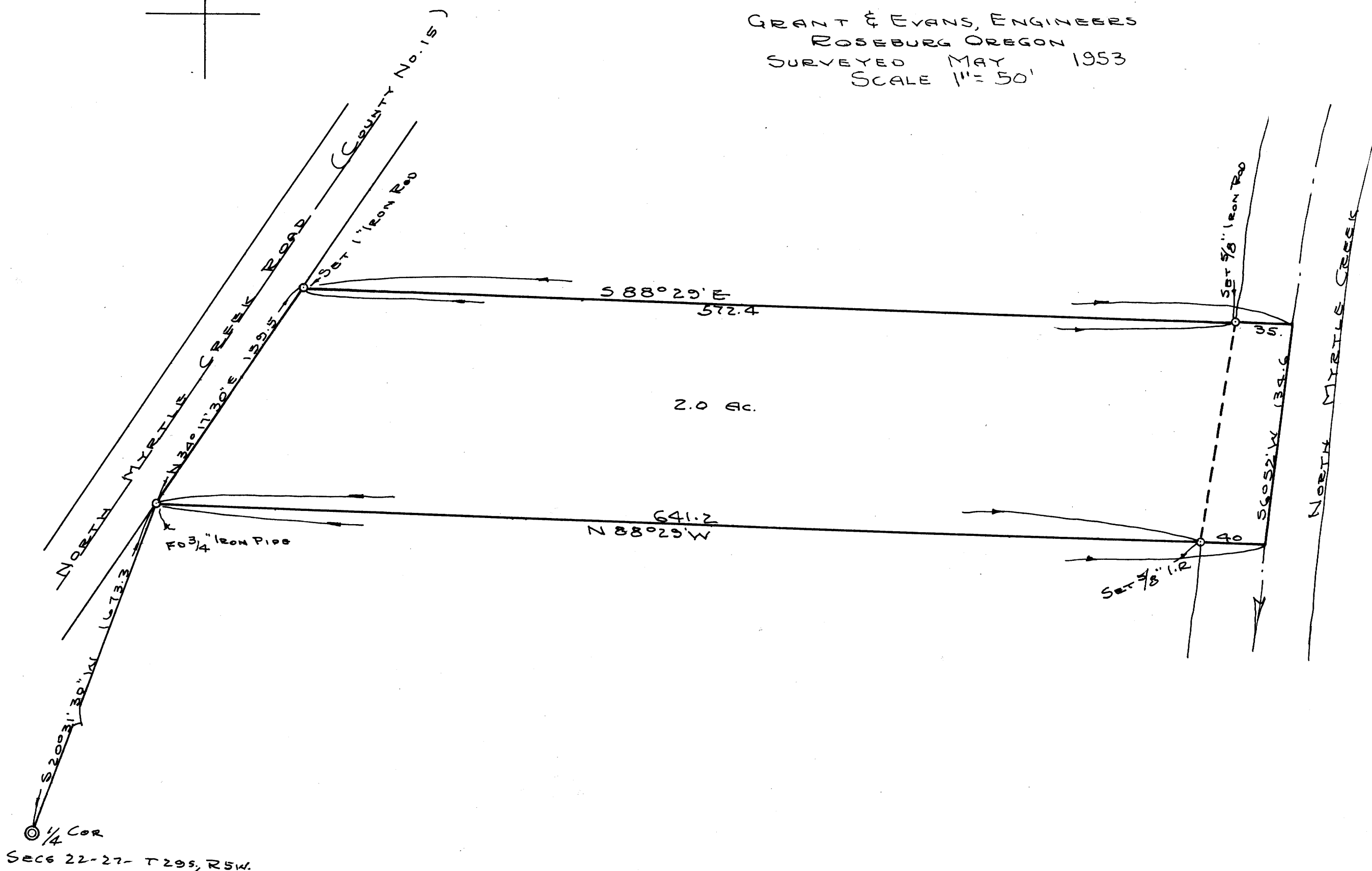
JUN 29 1953

SURVEY FOR DEED DESCRIPTION
IN SECTION 22, T29S, R5W: W.M.
DOUGLAS COUNTY OREGON

COUNTY SURVEYOR
DOUGLAS COUNTY, ORE.

**COUNTY SURVEYORS FILE DATA
DO NOT REMOVE FROM OFFICE**

GRANT & EVANS, ENGINEERS
ROSEBURG OREGON
SURVEYED MAY 1953
SCALE 1" = 50'



1/4 COR
SECS 22-27- T29S, R5W.

GRAF