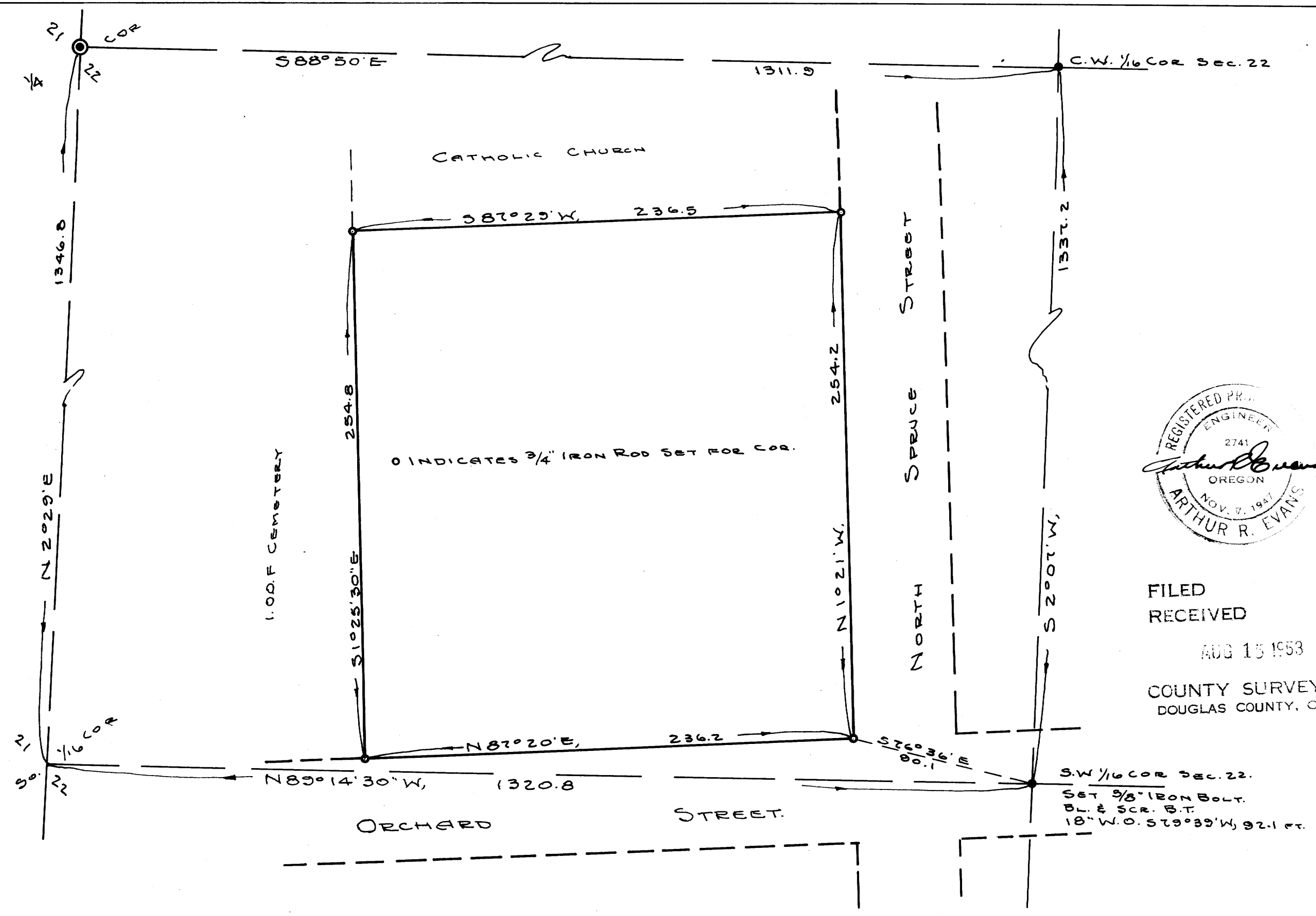


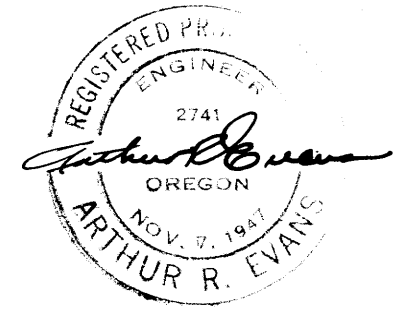
M 10-14

C.S. FILE 41-191  
Map file M 10-14 P

Scale 1" = 50'



O INDICATES 3/4" IRON ROD SET FOR COR.



FILED  
RECEIVED  
AUG 15 1953  
COUNTY SURVEYOR  
DOUGLAS COUNTY, ORE.

BEARINGS ARE TRUE, BASED ON A SOLAR OBSERVATION

COUNTY SURVEYORS FILE DATA  
DO NOT REMOVE FROM OFFICE

SURVEY FOR DEED DESCRIPTION  
NW + SW + SEC. 22, T29S, R5W, WM.  
DOUGLAS COUNTY, ORE.

GRANT AND EVANS, ENGINEERS  
ROSEBURG, OREGON.  
SURVEYED JUNE 1953.