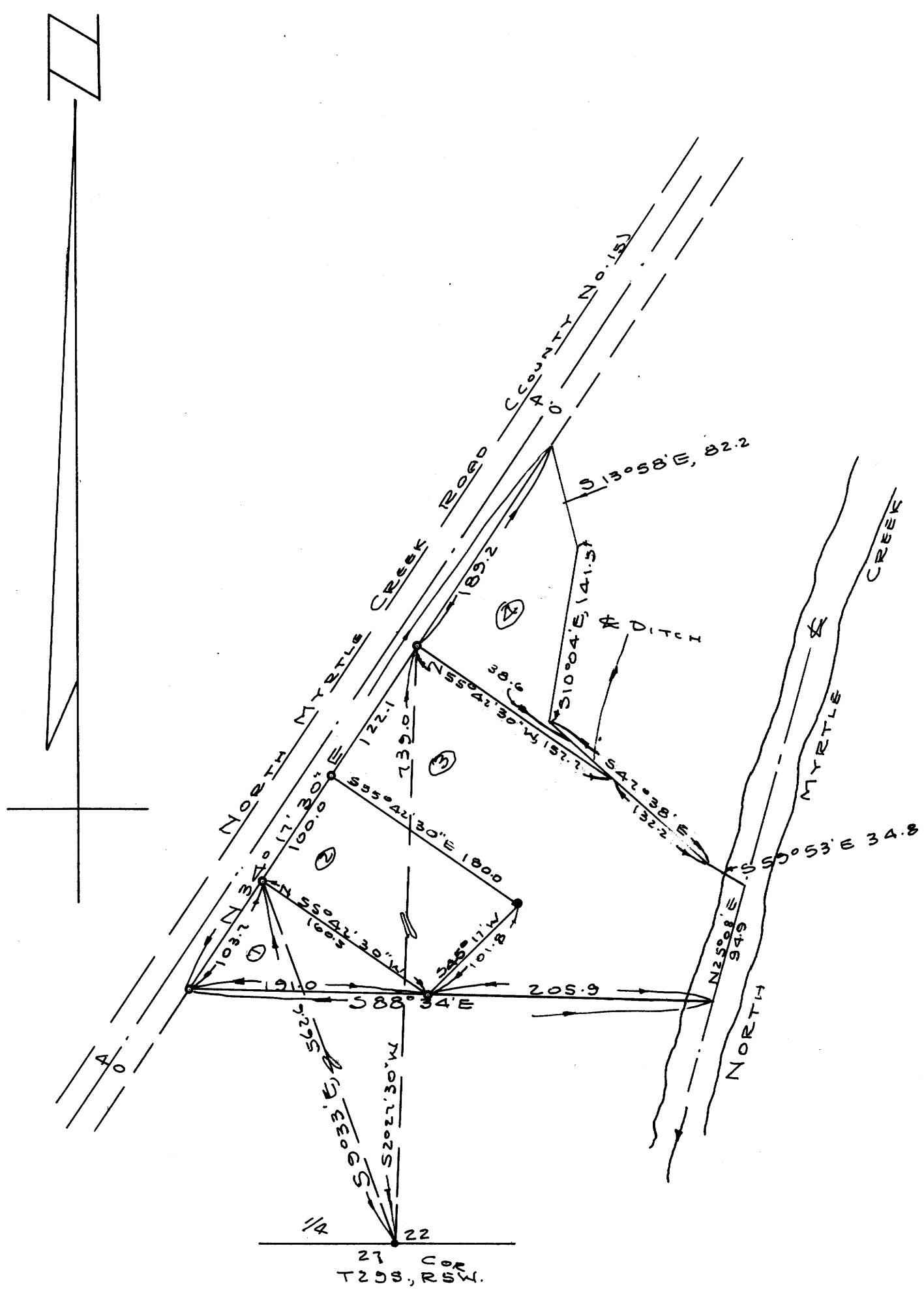


M 10-13

6

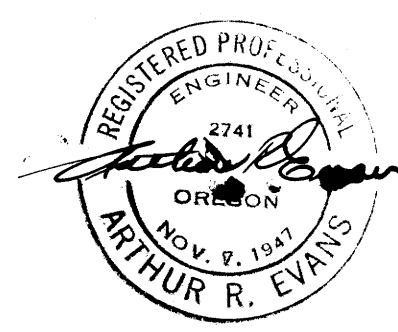
C.S. FILE 41-165
MAP FILE M 10-13 P



COUNTY SURVEYORS FILE DATA
DO NOT REMOVE FROM OFFICE

SURVEY FOR DEED DESCRIPTIONS
IN SECTION 22, T29S, R5W W.M.
DOUGLAS COUNTY OREGON

GRANT & EVANS, ENGINEERS
ROSEBURG OREGON
SURVEYED MAY 1953
SCALE 1" = 100'



FILED
RECEIVED
JUN 29 1953
COUNTY SURVEYOR
DOUGLAS COUNTY, ORE.

KENNETH WILSON

41/165