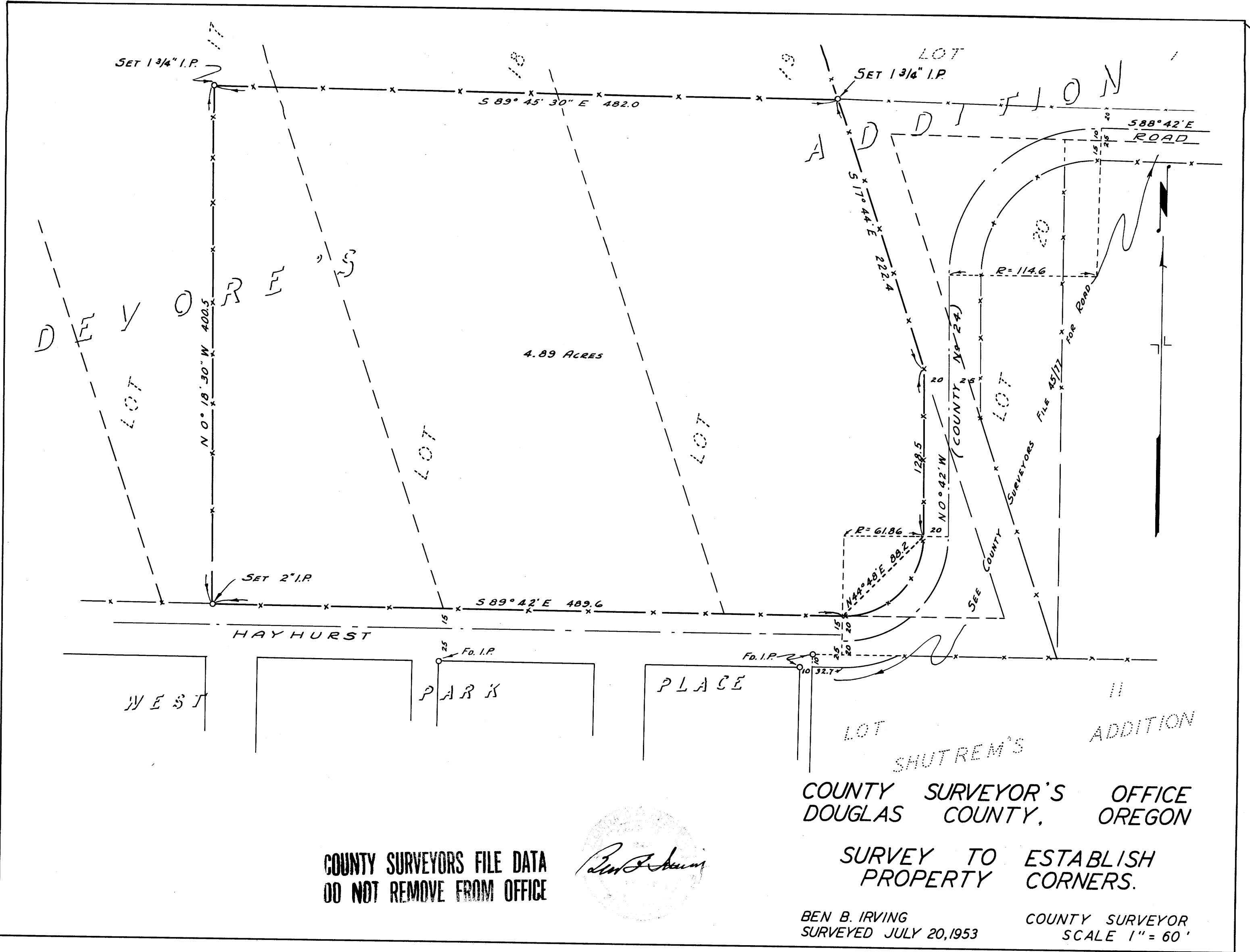


15/180
MAP FILE M 9-9



COUNTY SURVEYORS FILE DATA
DO NOT REMOVE FROM OFFICE

Ben B. Irving

COUNTY SURVEYOR'S OFFICE
DOUGLAS COUNTY, OREGON

SURVEY TO ESTABLISH
PROPERTY CORNERS.

BEN B. IRVING
SURVEYED JULY 20, 1953

COUNTY SURVEYOR
SCALE 1" = 60'

500347 23 R 5

6-6 W