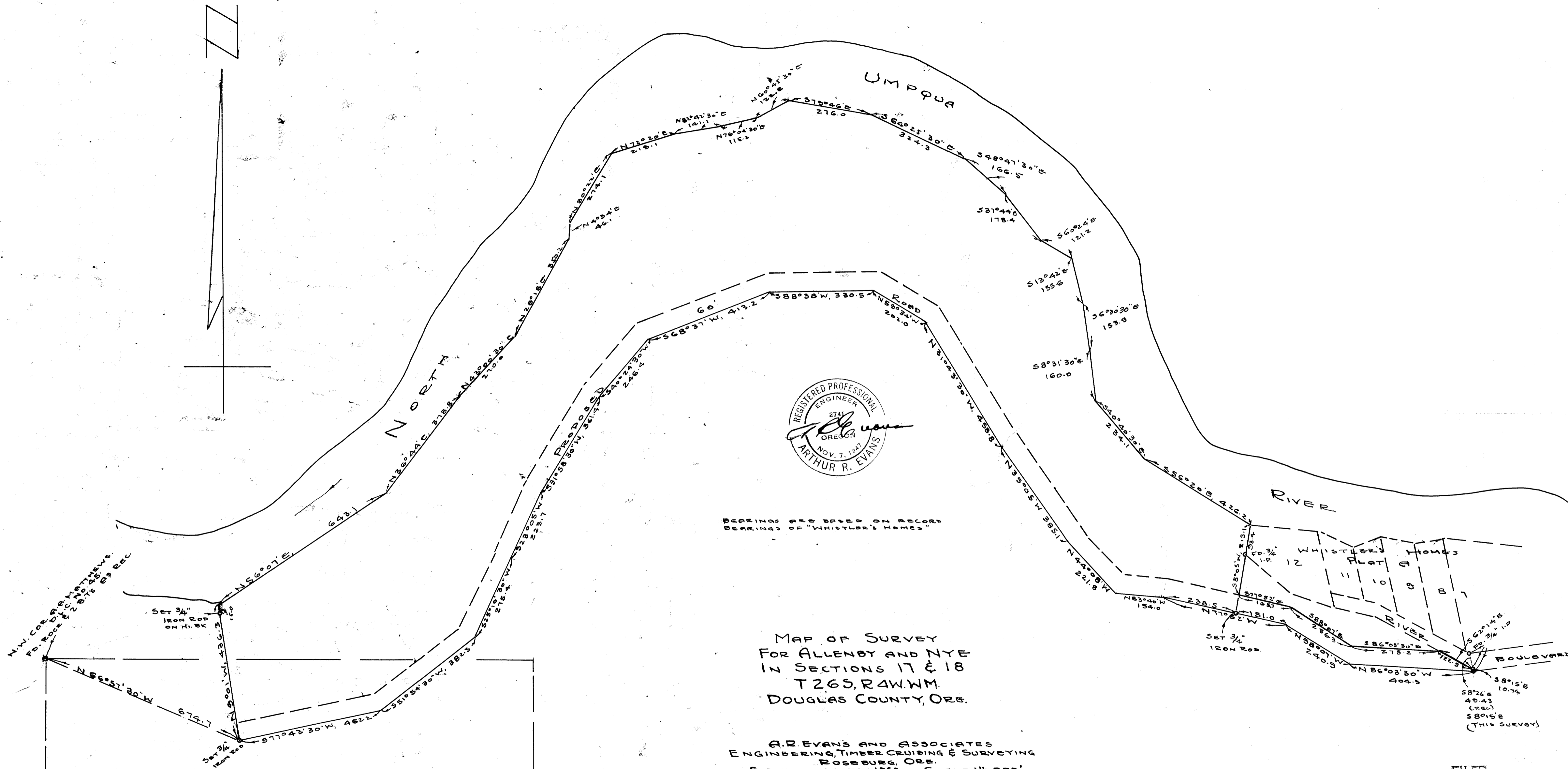


M 9-79



MAP OF SURVEY
 FOR ALLENBY AND NYE
 IN SECTIONS 17 & 18
 T26S, R4W, WM.
 DOUGLAS COUNTY, ORE.

A. R. EVANS AND ASSOCIATES
 ENGINEERING, TIMBER CRUISING & SURVEYING
 ROSEBURG, ORE.
 SURVEYED, MARCH, 1955 SCALE 1"=200'

COUNTY SURVEYORS FILE
 DO NOT REMOVE FROM OFFICE

FILED
 RECEIVED
 JUL 11 1955
 COUNTY SURVEYOR
 DOUGLAS COUNTY, ORE.

C.S. File No. 41/398

1

MAP FILE M 9-79
 C.S. FILE NO. 41/398