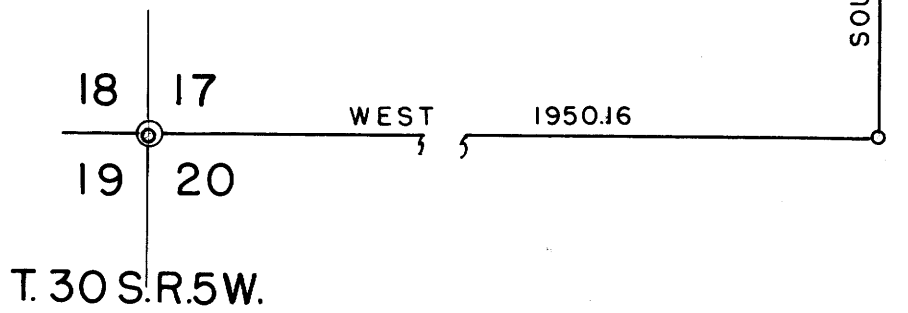
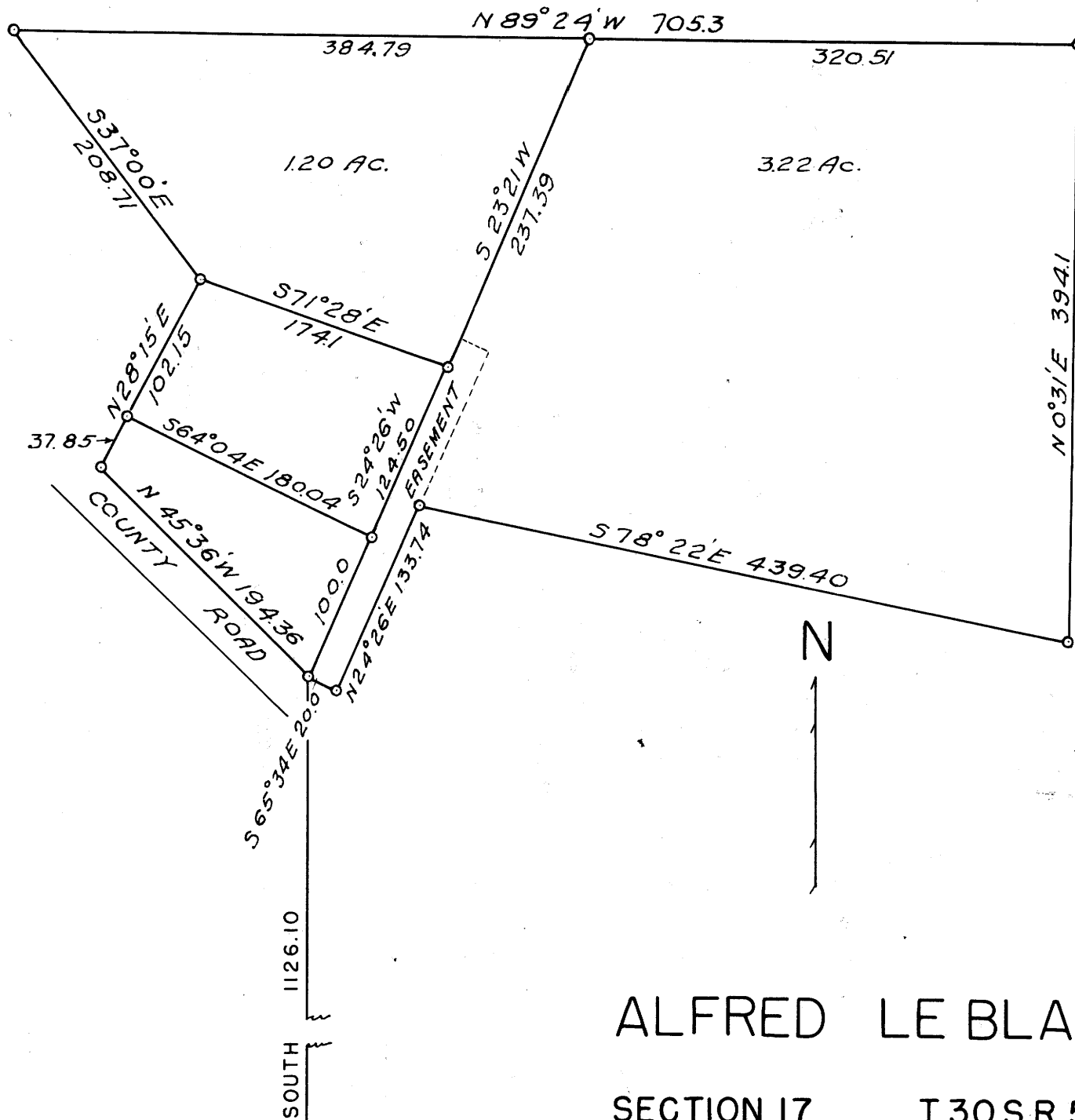


8L-6W



ALFRED LE BLANC

SECTION 17 T.30 S. R. 5 W.

SEPTEMBER 1954 1"=100'



FILED RECEIVED

MAR 20 1958

COUNTY SURVEYOR DOUGLAS COUNTY ORE.

COUNTY SURVEYORS FILE HERE DO NOT REMOVE FROM HERE

M 9-78