

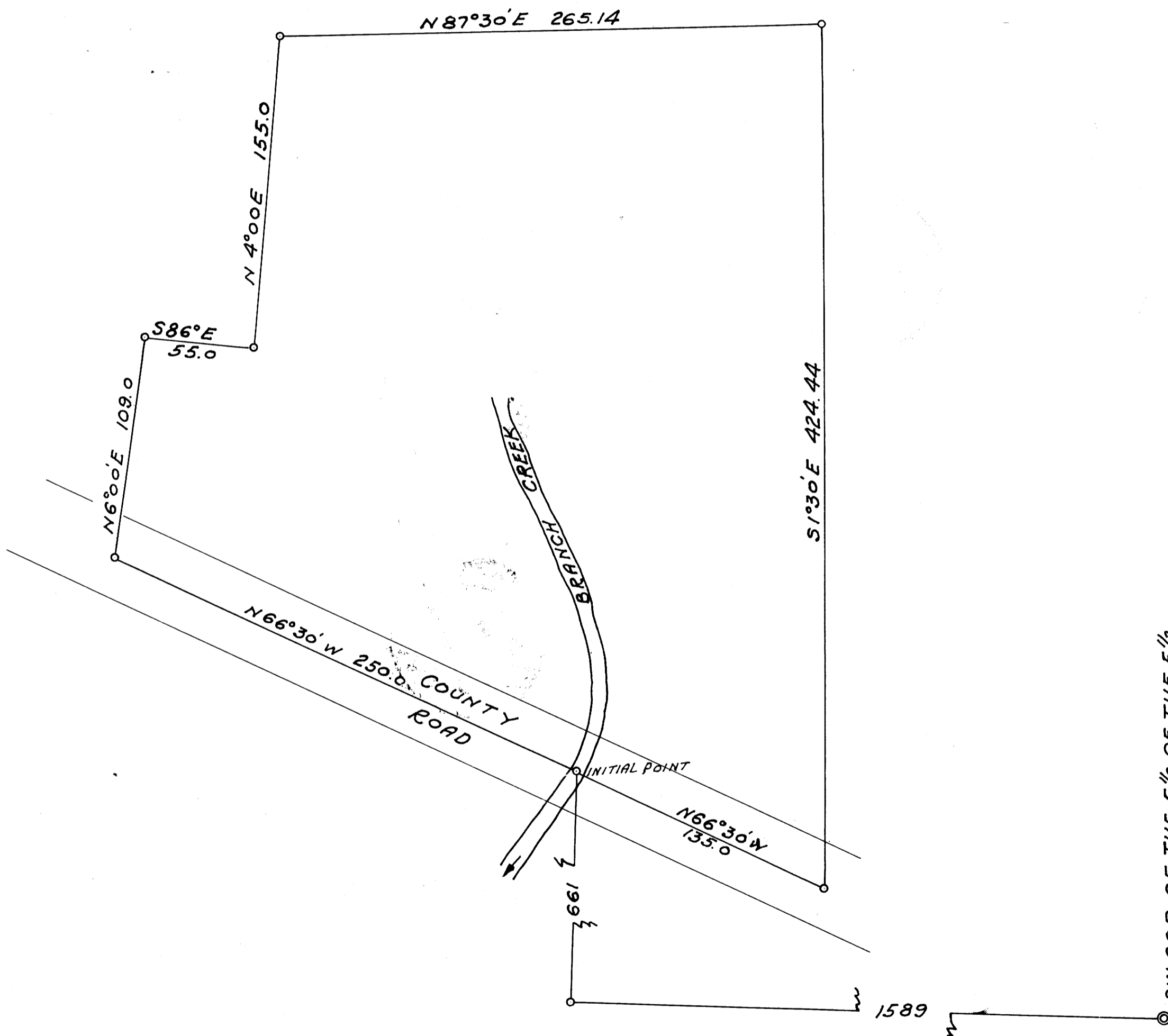
92-6 W

DO NOT REMOVE FROM FILE

CLYDE OSBORN  
SECTION 22 T. 29 S. R. 4 W.

AUGUST 1952  
1" = 50'

FRED L. DOW  
CIVIL ENGINEER



SW. COR. OF THE E 1/2 OF THE E 1/2  
OF THE BENJ. L. STEPHENS DLC No. 38  
IN SEC 22, T. 29 S. R. 4 W.

FILED  
RECEIVED

MAR 21 1958

COUNTY SURVEYOR  
DOUGLAS COUNTY, OR.

MAP FILE M 9-76