

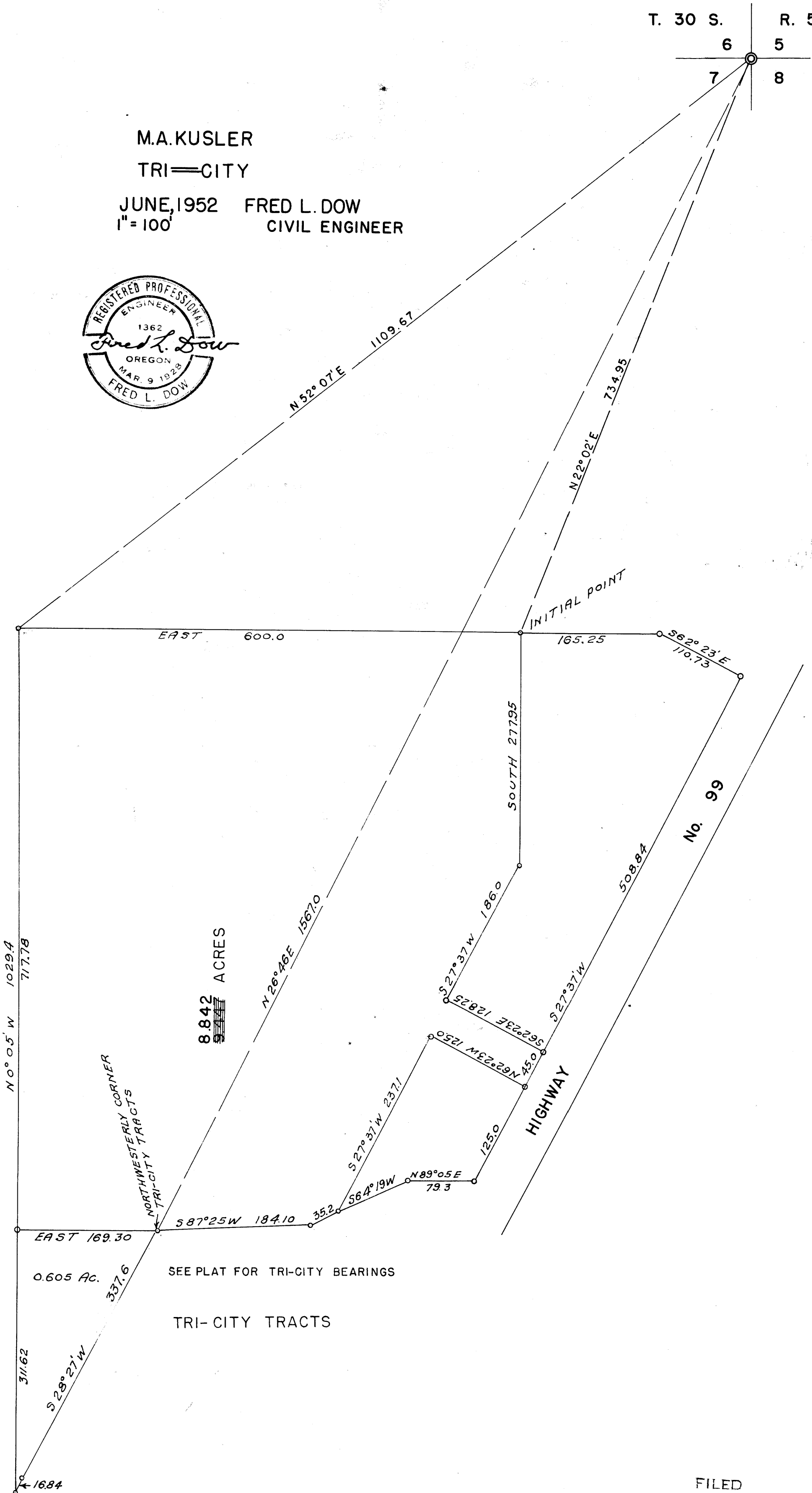
SL-6W

COUNTY SURVEYORS
DO NOT REMOVE FROM FILE

T. 30 S. R. 5 W.
6 5
7 8

M.A. KUSLER
TRI-CITY

JUNE, 1952 FRED L. DOW
1" = 100' CIVIL ENGINEER



8.842 ACRES

N 0° 05' W 1029.4
717.78

NORTHWESTERLY CORNER
TRI-CITY TRACTS

EAST 169.30

0.605 Ac.

S 28° 27' W 311.62
337.6

16.84

SEE PLAT FOR TRI-CITY BEARINGS

TRI-CITY TRACTS

S 87° 25' W 184.10

35.2

S 56° 4' 19" W 79.3

N 89° 05' E 125.0

S 27° 37' W 237.1

S 62° 23' E 128.25

N 62° 23' W 125.0

S 62° 23' E 128.25

S 27° 37' W 186.0

SOUTH 277.95

165.25

S 62° 23' E 110.73

INITIAL POINT

HIGHWAY

No. 99

FILED
RECEIVED

MAY 20 1958

COUNTY SURVEYOR
DOUGLAS COUNTY, ORE.

MAP FILE M9-75