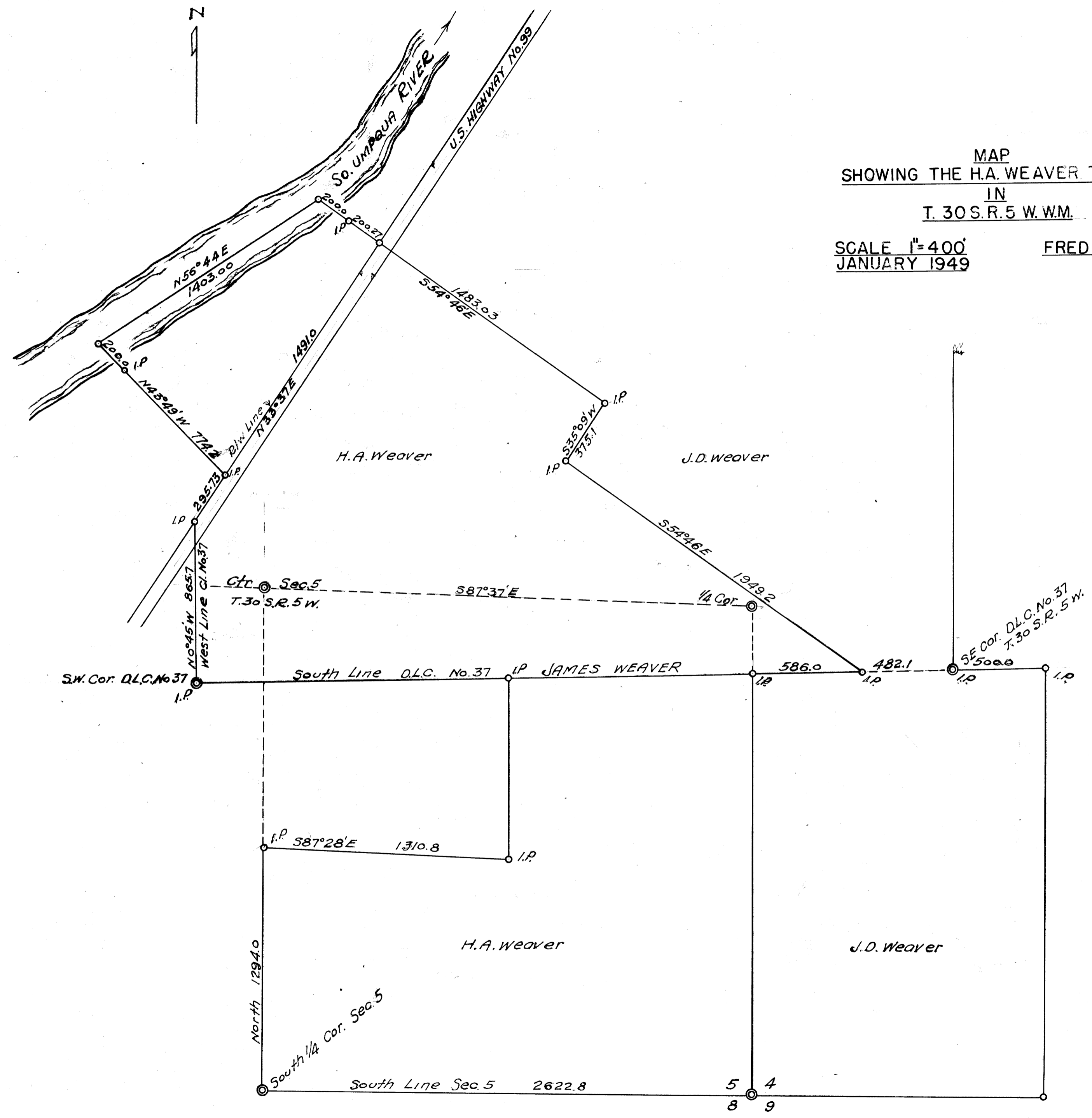


MAP  
SHOWING THE H.A. WEAVER TRACT  
IN  
T. 30 S. R. 5 W. W.M.

SCALE 1"=400'  
JANUARY 1949

FRED L. DOW  
CIV. ENG.



FILED  
RECEIVED

MAR 2 1958

COUNTY SURVEYOR  
DOUGLAS COUNTY, ORE.