

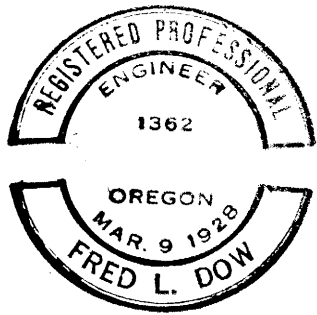
COUNTY SURVEYORS FILE
DO NOT REMOVE FROM OFFICE

ONE QUARTER CORNER

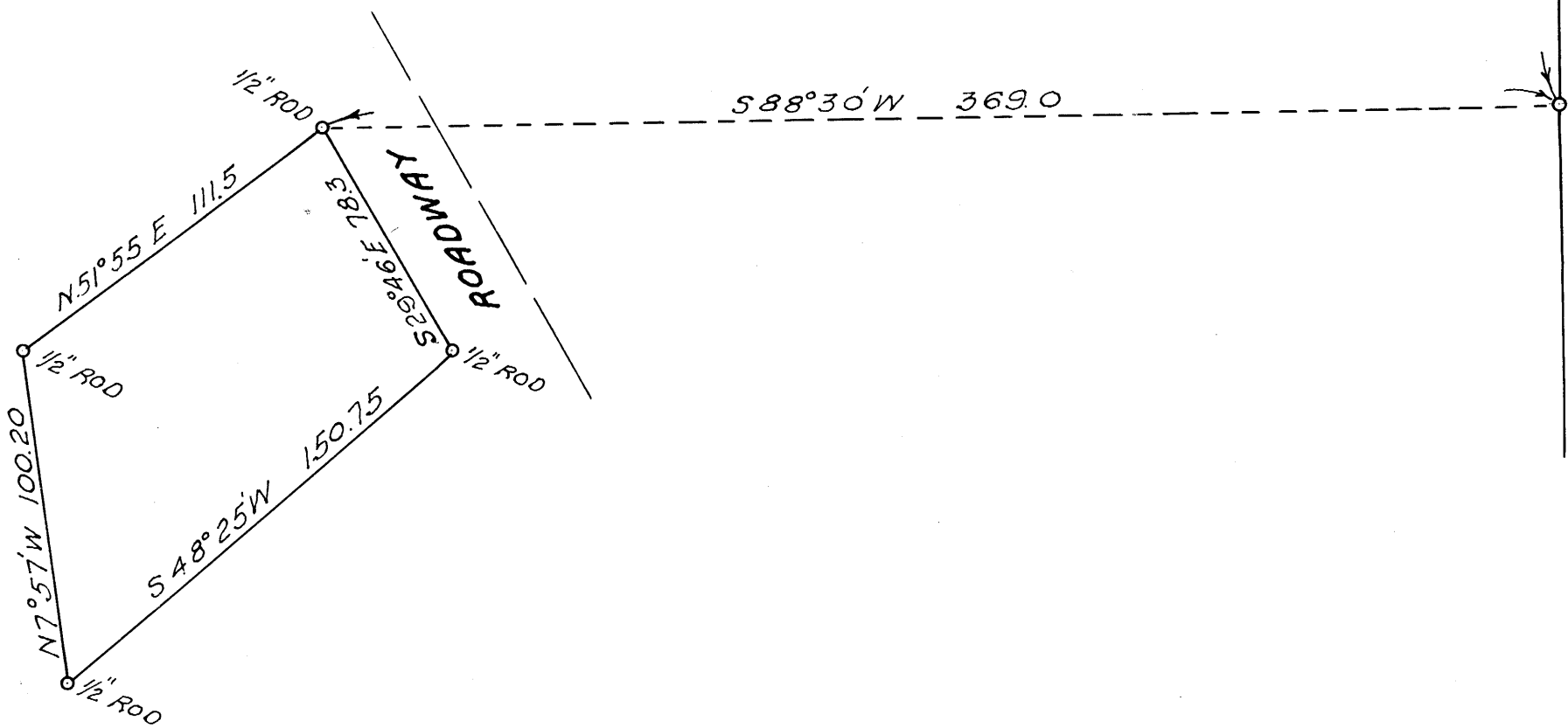
4 @ 3

T. 25 S. R. 5 W.

ALLEN D. SUPERNAUGH
OAKLAND
SCALE 1"=50' AUGUST 1954



51°30'E 518.4



FILED
RECEIVED

MAR 23 1958

COUNTY SURVEYOR
DOUGLAS COUNTY, ORE.

MAP FILE M 9 - 73