

COUNTY SURVEYORS FILE
DO NOT REMOVE FROM FILE

MAP FILE M9-72

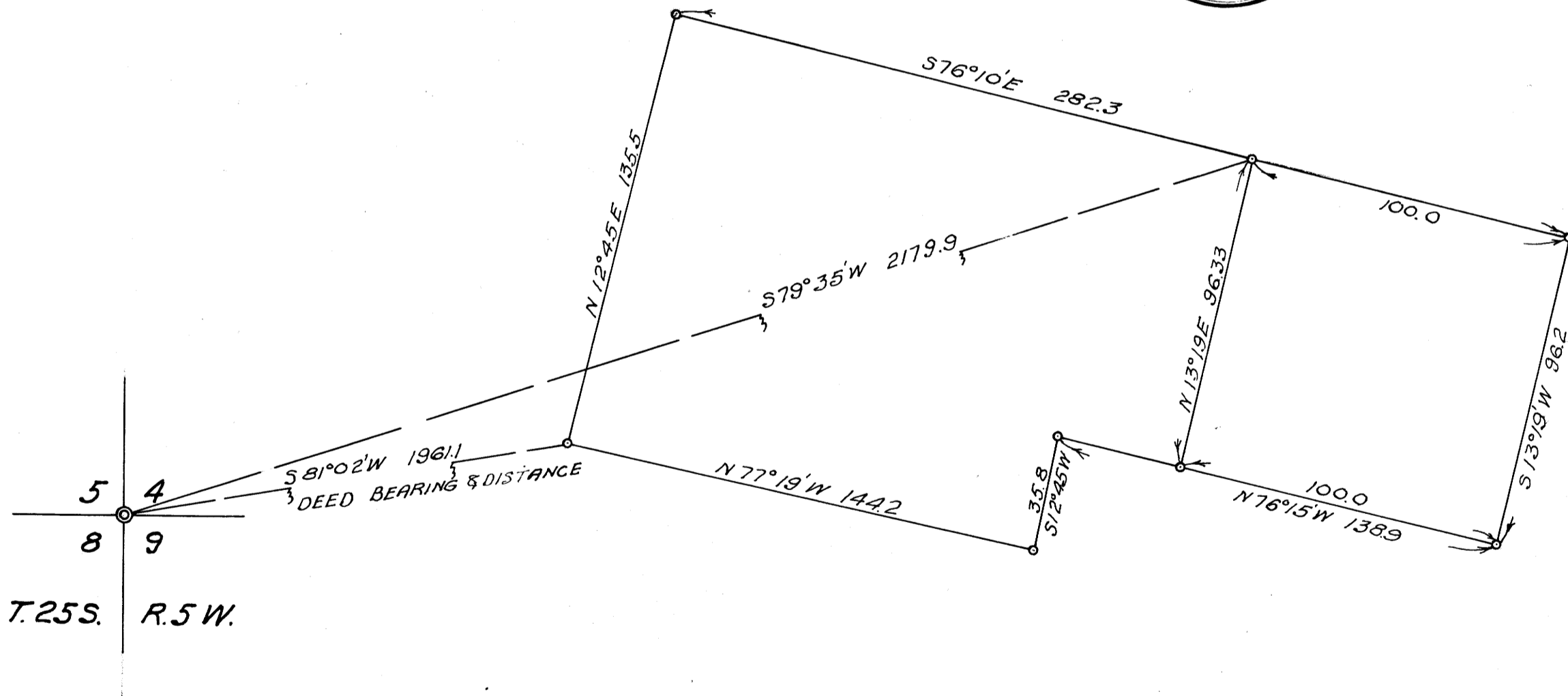


LOYAL F. STEARNS
OAKLAND

MARCH 1954

FRED L. DOW, SURVEYOR

1" = 40'



FILED
RECEIVED

MAR 23 1958

COUNTY SURVEYOR
DOUGLAS COUNTY, ORE.

M9-72