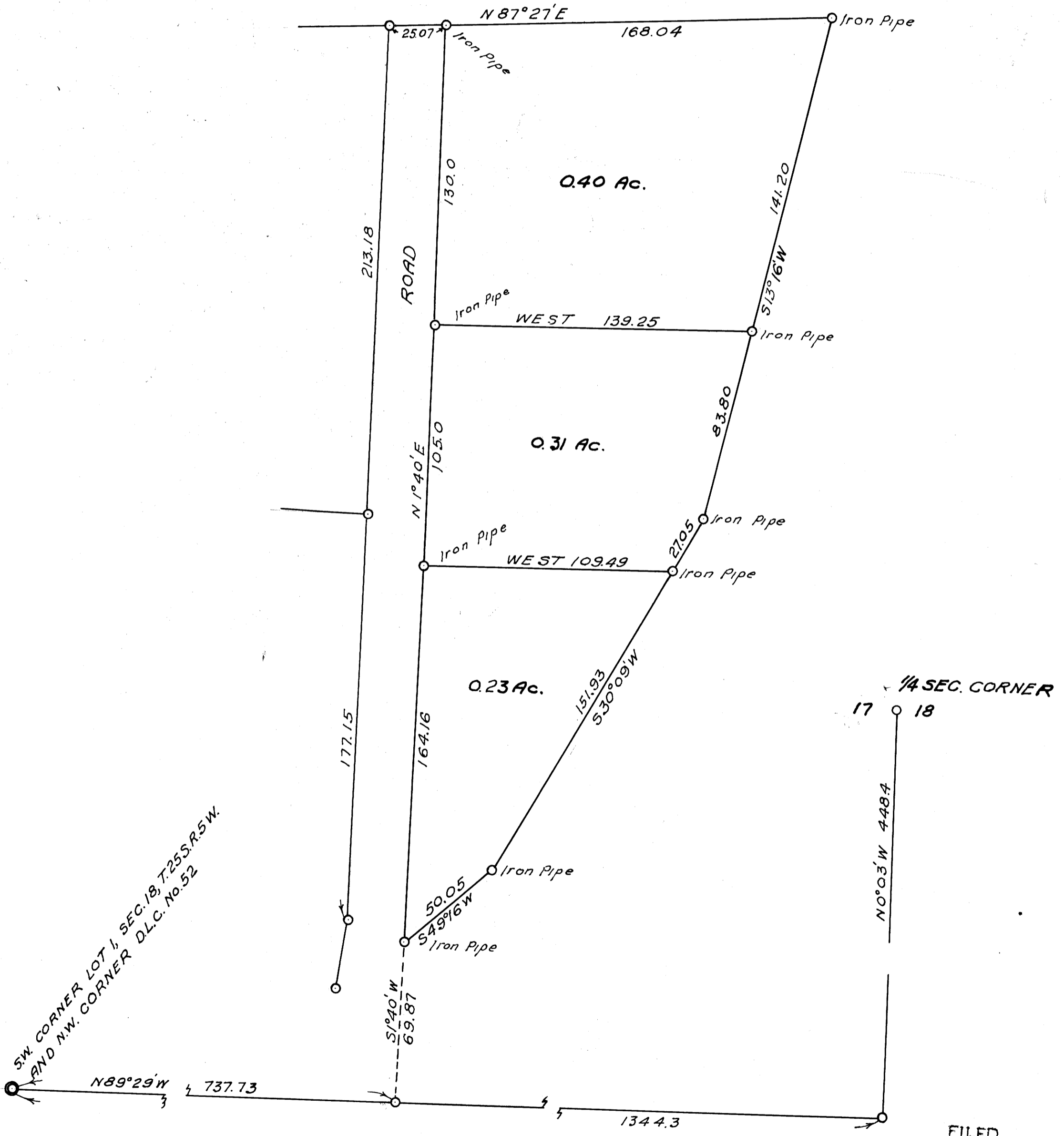


WALTER WILLOUGHBY

SUTHERLIN
SECTION 18,
SCALE 1" = 40'

OREGON
T. 25 S. R. 5 W.
SEPTEMBER 1954



SW CORNER LOT 1, SEC. 18, T. 25 S. R. 5 W.
AND N.W. CORNER D.L.C. No. 52

FILED
RECEIVED
MAR 23 1958
COUNTY SURVEYOR
DOUGLAS COUNTY, ORE.