

COUNTY SURVEYORS FILE
DO NOT REMOVE FROM

MAP FILE M 9-66

FILED
RECEIVED

JUL 24 1953

COUNTY SURVEYOR
DOUGLAS COUNTY, ORE.

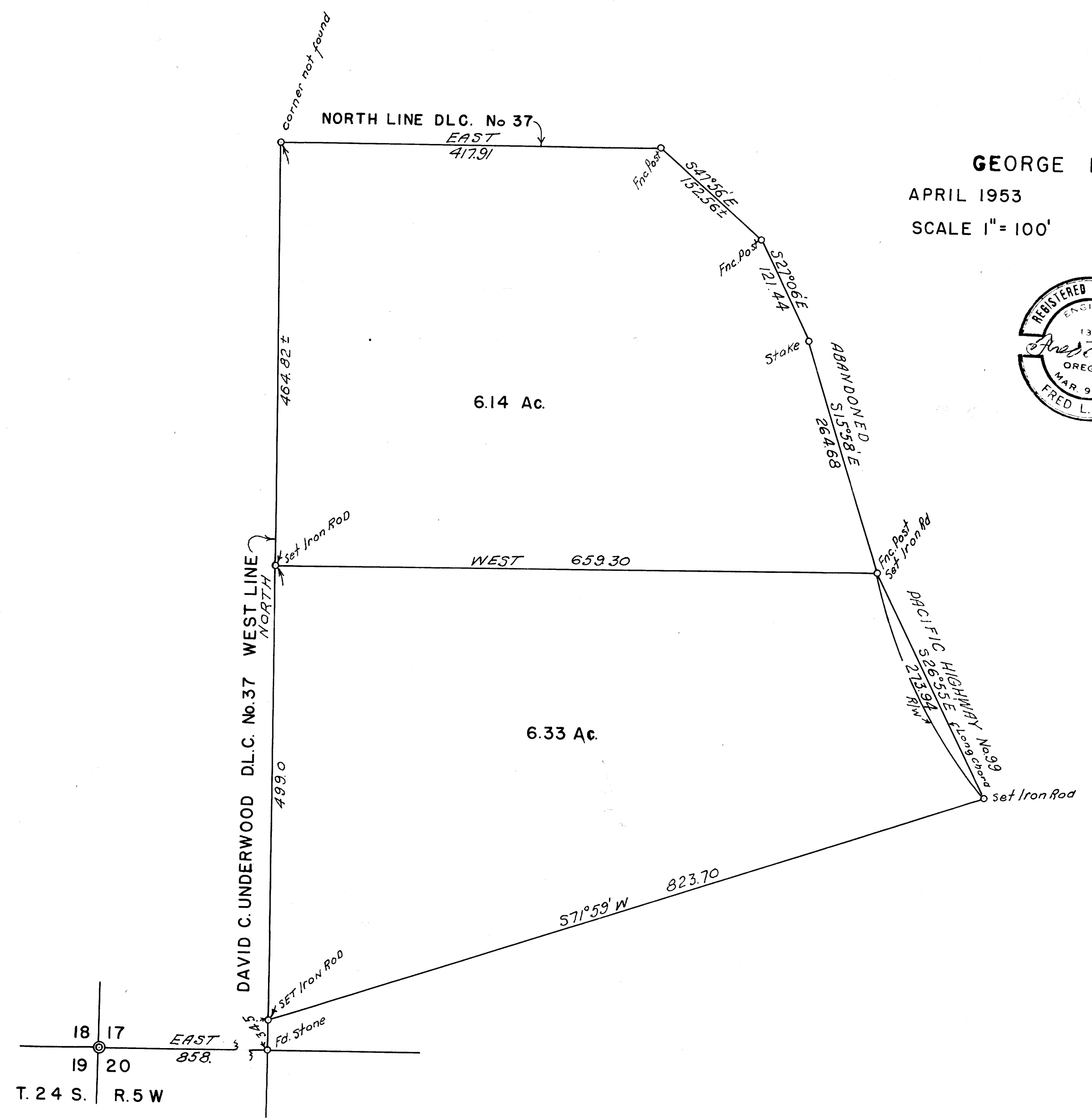
GEORGE ENGLAND

APRIL 1953

FRED L. DOW

CIVIL ENGINEER

SCALE 1" = 100'



FILED
RECEIVED

MAR 20 1958

COUNTY SURVEYOR
DOUGLAS COUNTY, ORE.

M 9-66