

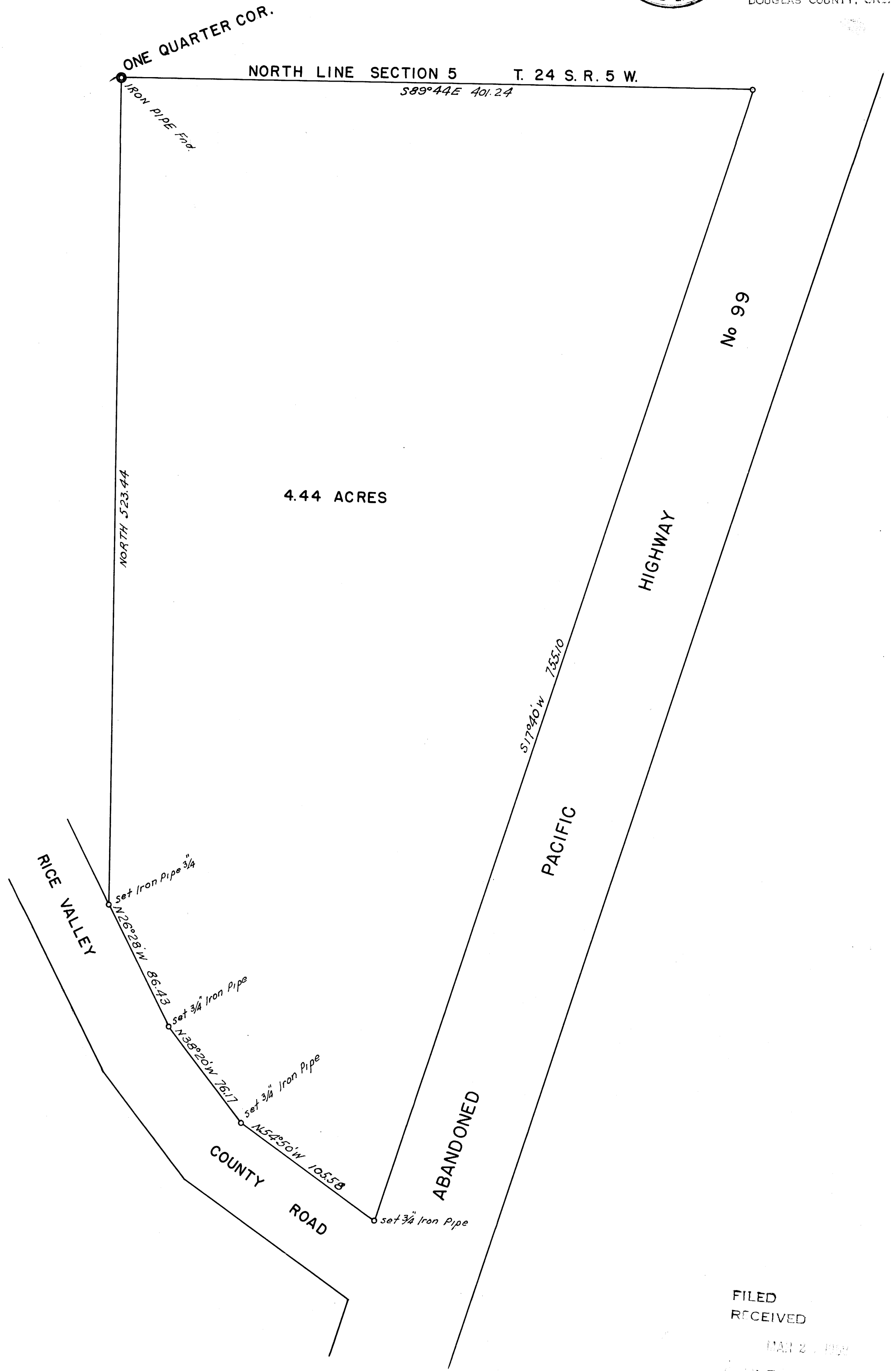
59-6W

COUNTY SURVEYORS FILE DATA
DO NOT REMOVE FROM OFFICE

ROBERT M. CRAWFORD
OAKLAND OREGON
JUNE 1953 FRED L. DOW
SCALE 1" = 50' C.E.



FILED
RECEIVED
JUL 24 1953
COUNTY SURVEYOR
DOUGLAS COUNTY, ORE.



FILED
RECEIVED
MAR 27 1953
COUNTY SURVEYOR
DOUGLAS COUNTY, ORE.

MAP FILE M9-65